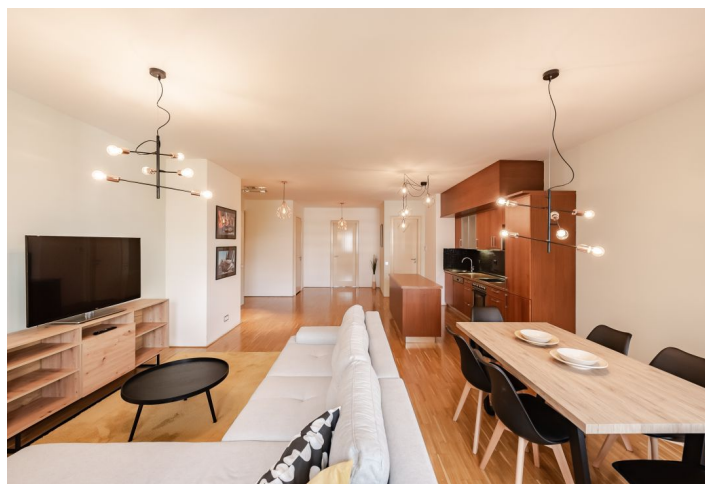




Apartment Two-bedroom (3+kk)

Rented

116 m², Praha 8, Karlín, Rohanské nábřeží





Apartment Two-bedroom (3+kk)

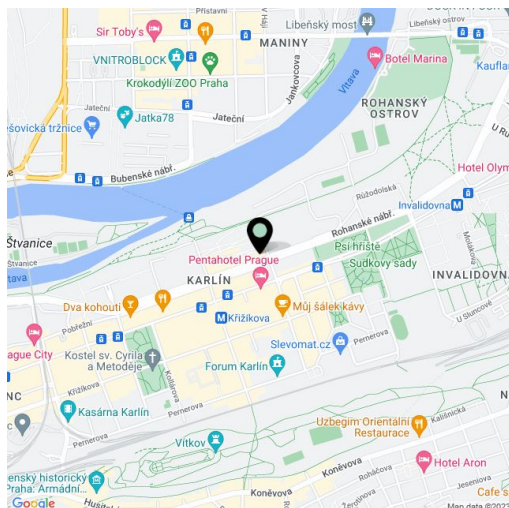
Rented116 m², Praha 8, Karlín, Rohanské nábřeží

Total area	116 m ²
Parking	Two garage spaces included.
Garage	Yes
Cellar	-
Service price	Common building charges and energies CZK 9000 per month.
PENB	C
Reference number	1346
Available from	Immediately

Completely furnished 2-bedroom 2-bathroom flat on the fourth floor in the modern River Diamond residential project with a 24-hour reception, security and parking. Located on the Prague 1 - Prague 8 border, in one of the most dynamically developing districts, with quick access to the city center.

The flat features a spacious living room with a fully fitted open kitchen and nice views of the Japanese-style courtyard garden, master bedroom with an en-suite bathroom (tub, toilet), second bedroom, shower bathroom, a guest toilet, hall, and utility / storage room.

Parquet floors, security entry door, washer, dryer, dishwasher, microwave oven, dishes, TV, audio entry phone. Building amenities include on-site property management and maintenance, lifts and secure underground parking. Two garage spaces included. Common building charges and energies CZK 9000 per month.



* Area of the unit according to the Civil Code. The area consists of the sum total area of the entire unit bounded by perimeter walls.



Apartment Two-bedroom (3+kk)

116 m², Praha 8, Karlín, Rohanské nábřeží

Rented

