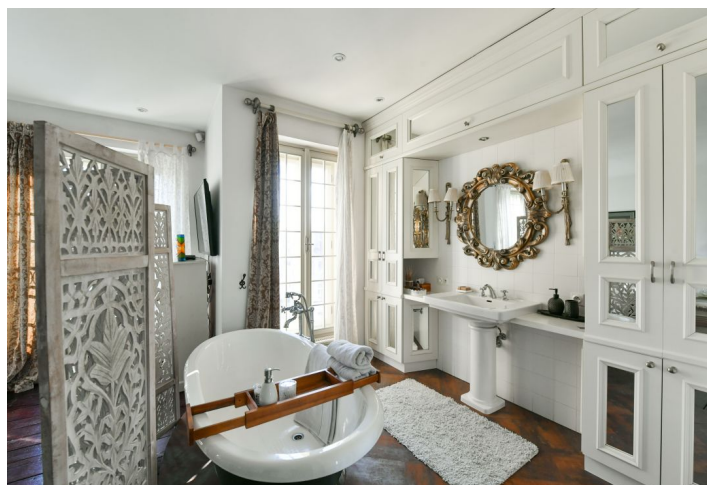
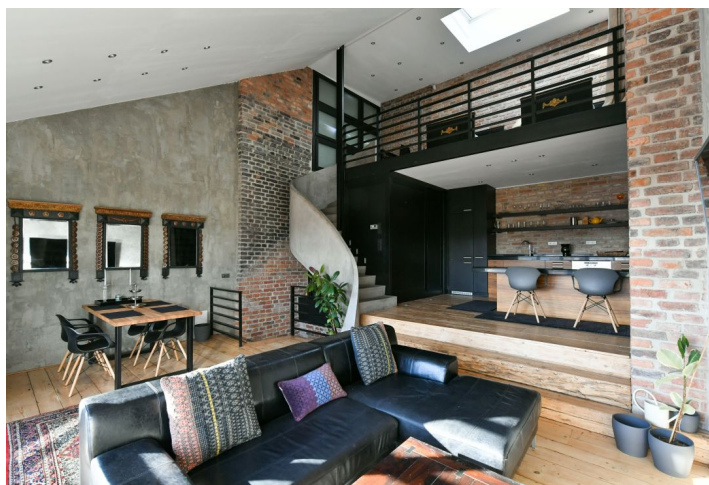
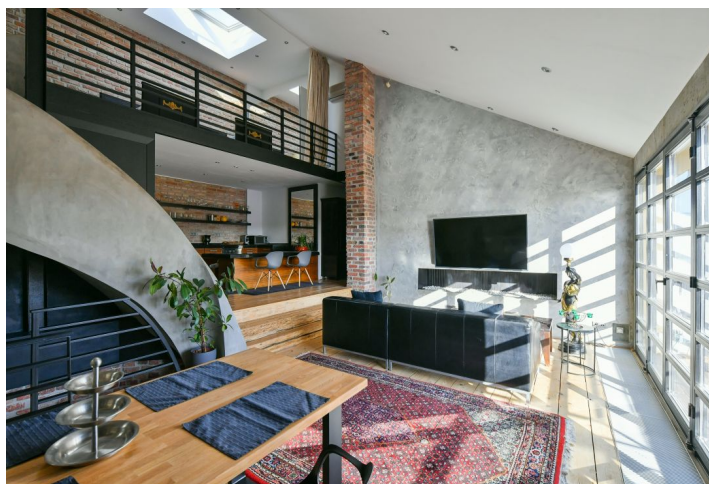
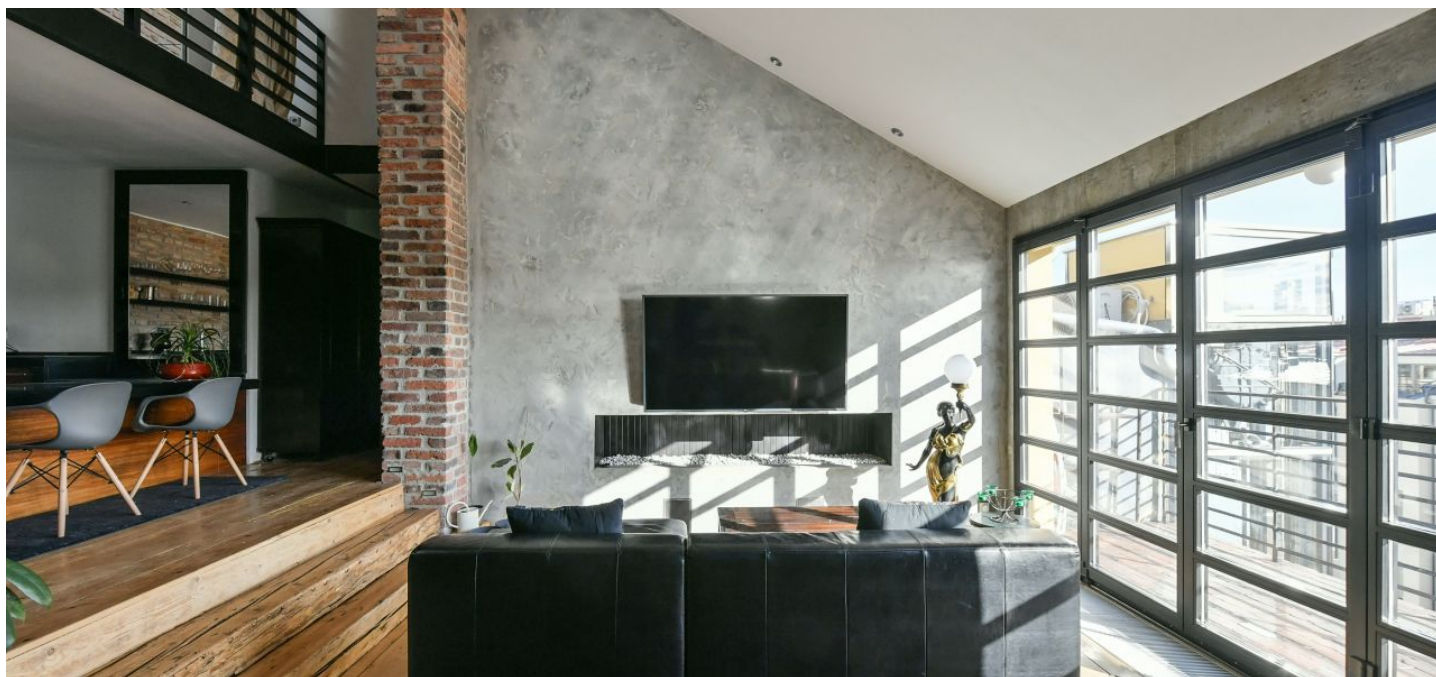




Apartment Two-bedroom (3+kk)

Sold

115 m², Praha 2, Vinohrady, Polská





Apartment Two-bedroom (3+kk)

Sold115 m², Praha 2, Vinohrady, Polská

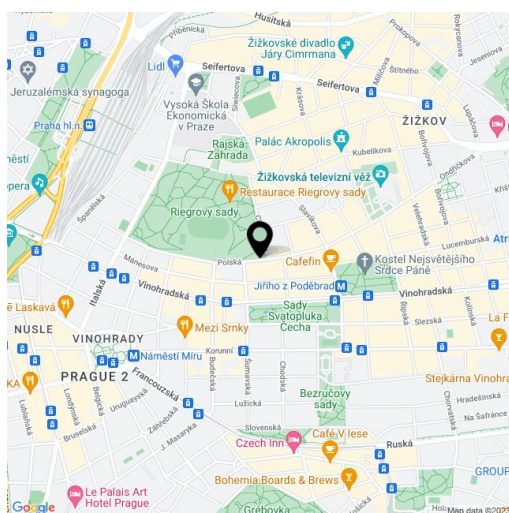
Total area	123 m ²
Floor area*	115 m ²
Terrace	8 m ²
Parking	-
Cellar	-
PENB	G
Reference number	13525

Stylish bi-level air-conditioned attic apartment with a courtyard-facing terrace situated on the 6th floor of a completely reconstructed early 20th century building with an elevator, situated across from Riegrovy Sady Park.

On the lower level is a spacious bedroom with an open-plan, fully appointed bathroom. On the main level there is a completely equipped kitchen open to a double height living room with a **modern fireplace, terrace**, and 2nd bathroom with a shower. A custom made staircase leads to an **open gallery which is used as a second bedroom**. The apartment features a modern interior design and furniture.

Within easy reach of fine restaurants, coffee shops, the divadlo Na Vinohradech theater and Riegrovy Sady Park, close to the Jiřího z Poděbrad **metro station** (line A), and tram stops.

Interior 114.68 m², terrace 8.21 m².



* Area of the unit according to the Civil Code. The area consists of the sum total area of the entire unit bounded by perimeter walls.