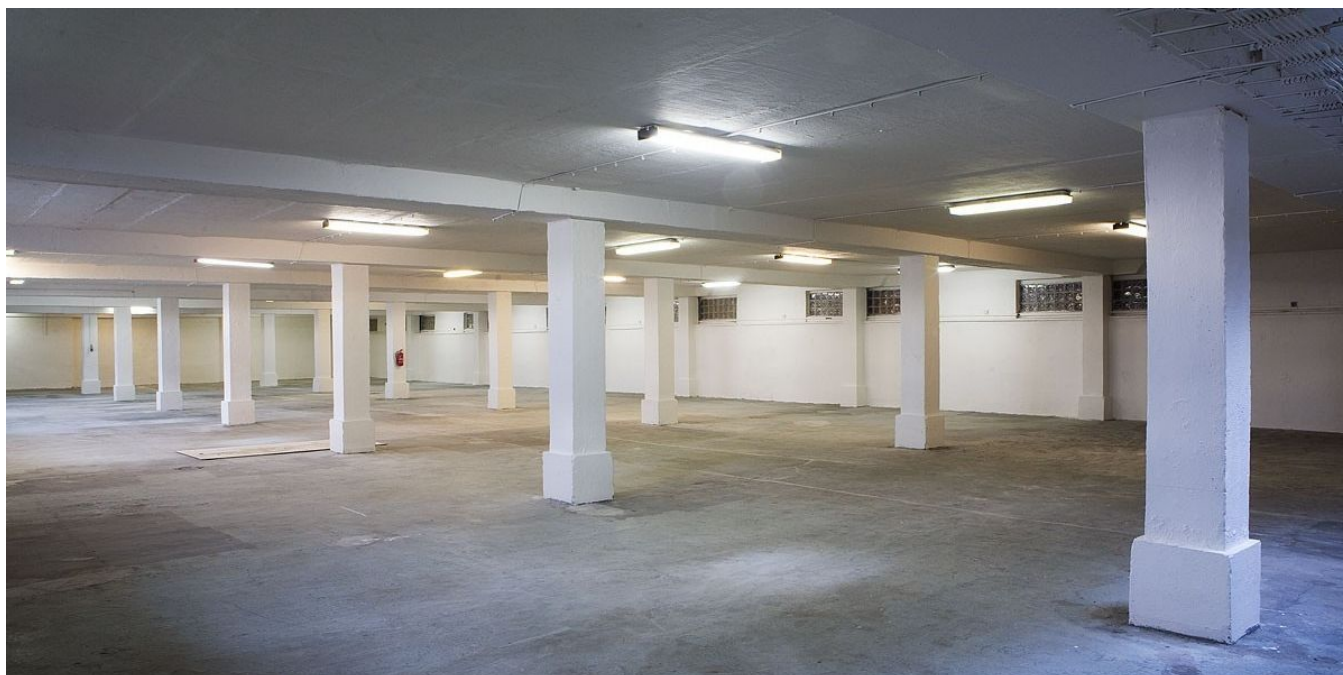




## Warehouse space

926 m<sup>2</sup>, Praha 9, Horní Počernice, Ve Žlábku

Ask for price





## Warehouse space

[Ask for price](#)926 m<sup>2</sup>, Praha 9, Horní Počernice, Ve Žlábku

Total area	926 m <sup>2</sup>
Available area for rent	926 m <sup>2</sup>
Ceiling height	3 m
Floor loading capacity	—
Column grid structure	—
Structure	—
PENB	G
Reference number	13605

**863 sq.m.** of warehouse and **63 sq.m.** of office premises on the ground floor of a renovated warehouse hall B8, located in the logistics center in Prague 9. The halls B8 are thermal insulated, heated (local heating controls), suitable for storage or light production with an office facility.

### Facilities and services:

- 24 hours security protection
- camera system with recording
- electronic patrol system with GPS monitoring
- access to the premises 24 hours a day
- management office on site
- food shop and canteen
- metro Černý most about 10 min by bus

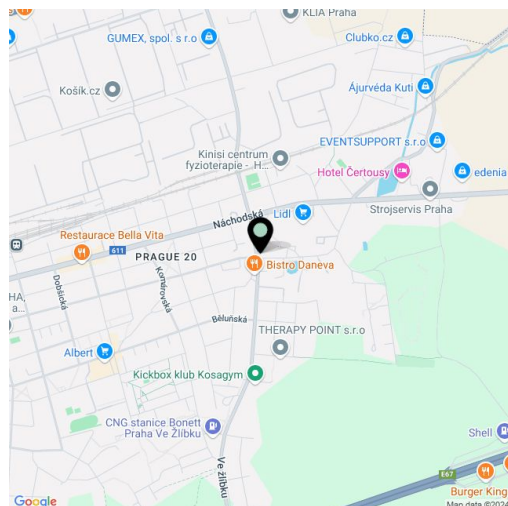
### Production/warehouse premises:

- flexible open space
- clear height 3 m
- hydraulic ramp

Good transport accessibility, bus stop in front of the center, dining and parking on site.

**Available from 3/2025.**

Lessee pays no commission.





## Warehouse space

Ask for price

926 m<sup>2</sup>, Praha 9, Horní Počernice, Ve Žlábku

