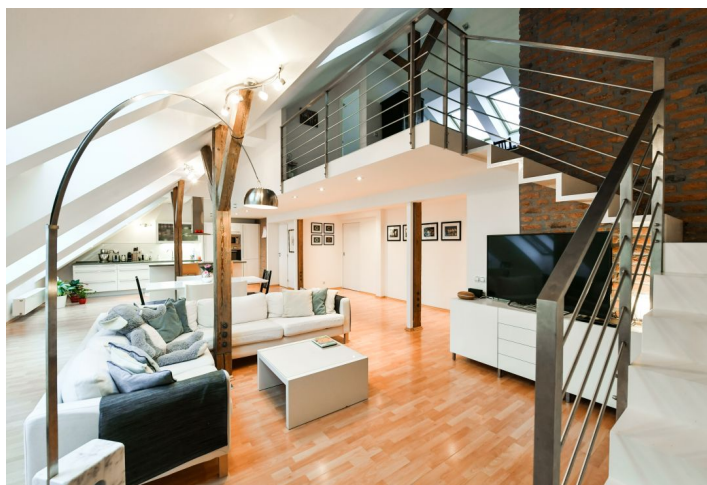




Apartment Four-bedroom (5+kk)

Rented

188 m², Prague 6, Dejvice, Evropská





Apartment Four-bedroom (5+kk)

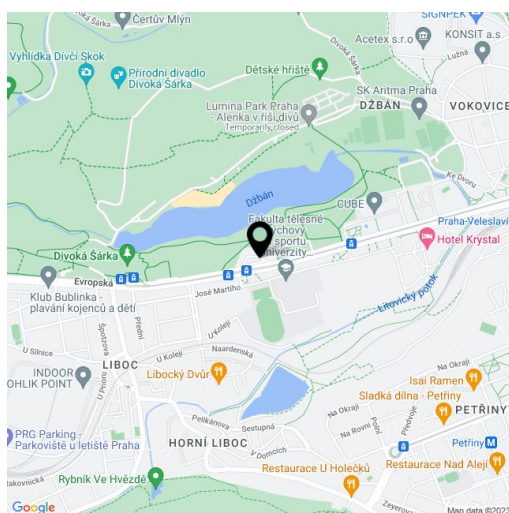
Rented188 m², Prague 6, Dejvice, Evropská

Total area	188 m ²
Parking	Parking available nearby.
Garage	Yes
Cellar	-
PENB	G
Reference number	13765
Available from	Immediately

Bright furnished 3-bedroom 2-bathroom attic flat with gallery on the 5th floor of a completely renovated building with a lift, steps from Vítězné náměstí Square. Located just moments from a tram stop, a metro station and rich amenities in the center of Dejvice neighborhood. Location with great access to the city center (6 min. by metro), the airport and international schools, within walking distance of the Prague Castle and the Stromovka Park.

The apartment offers a large living area with a fully fitted open kitchen and a view of the Petřín hill, two bedrooms facing the quiet courtyard, bathroom with double sink, bath tub and walk-in shower, toilet with sink and bidet, and an entry hall. The upper floor features the 3rd bedroom with en-suite bathroom (bathtub, toilet), open study, and storage room.

Pantry, dishwasher, microwave, audio entry phone. Parking available in a nearby underground garage for extra charge. Common building charges CZK 4000/month. Electricity will be transferred to the tenant's name. Available from mid May 2021.



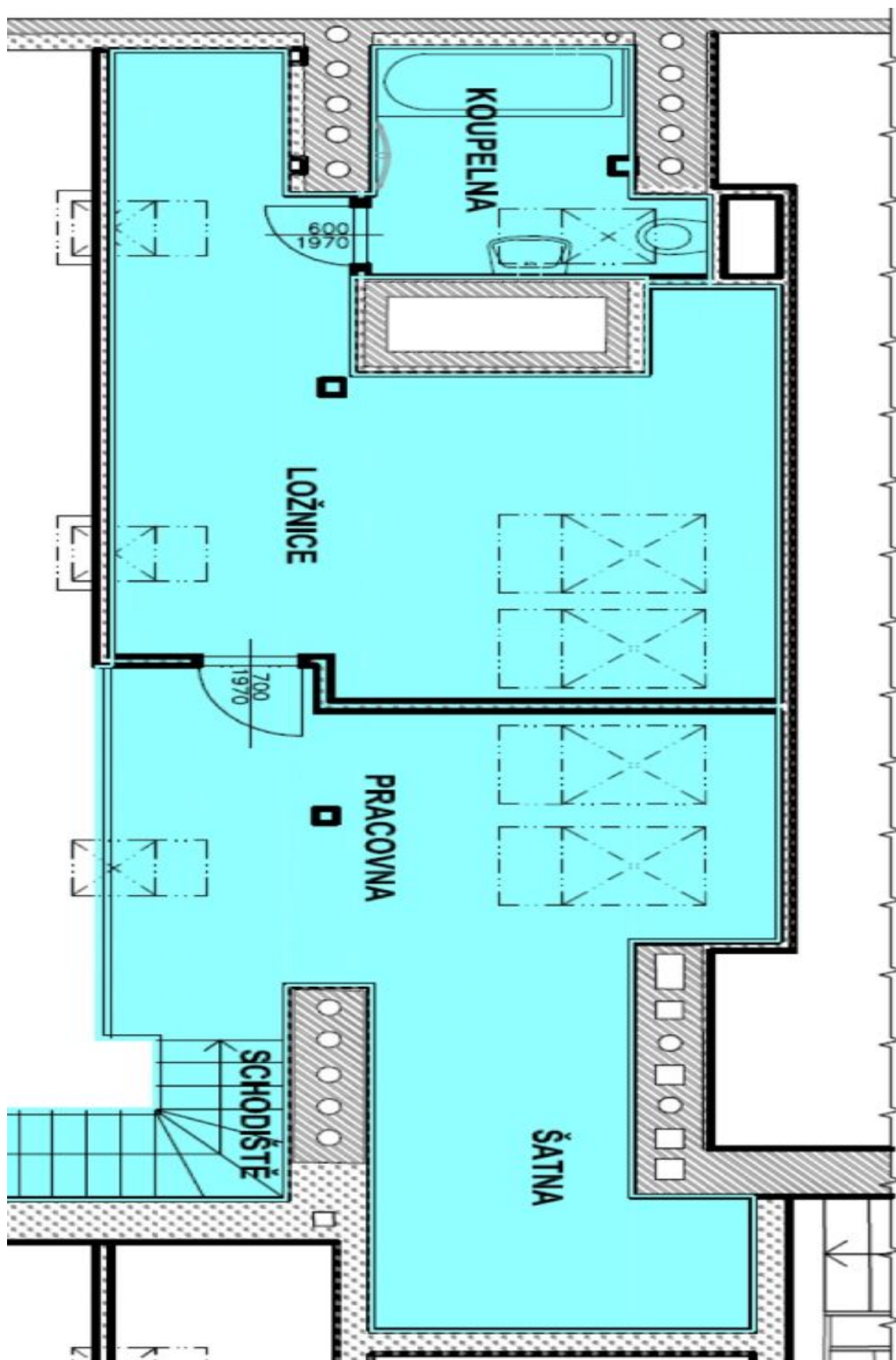
* Area of the unit according to the Civil Code. The area consists of the sum total area of the entire unit bounded by perimeter walls.



Apartment Four-bedroom (5+kk)

Rented

188 m², Prague 6, Dejvice, Evropská

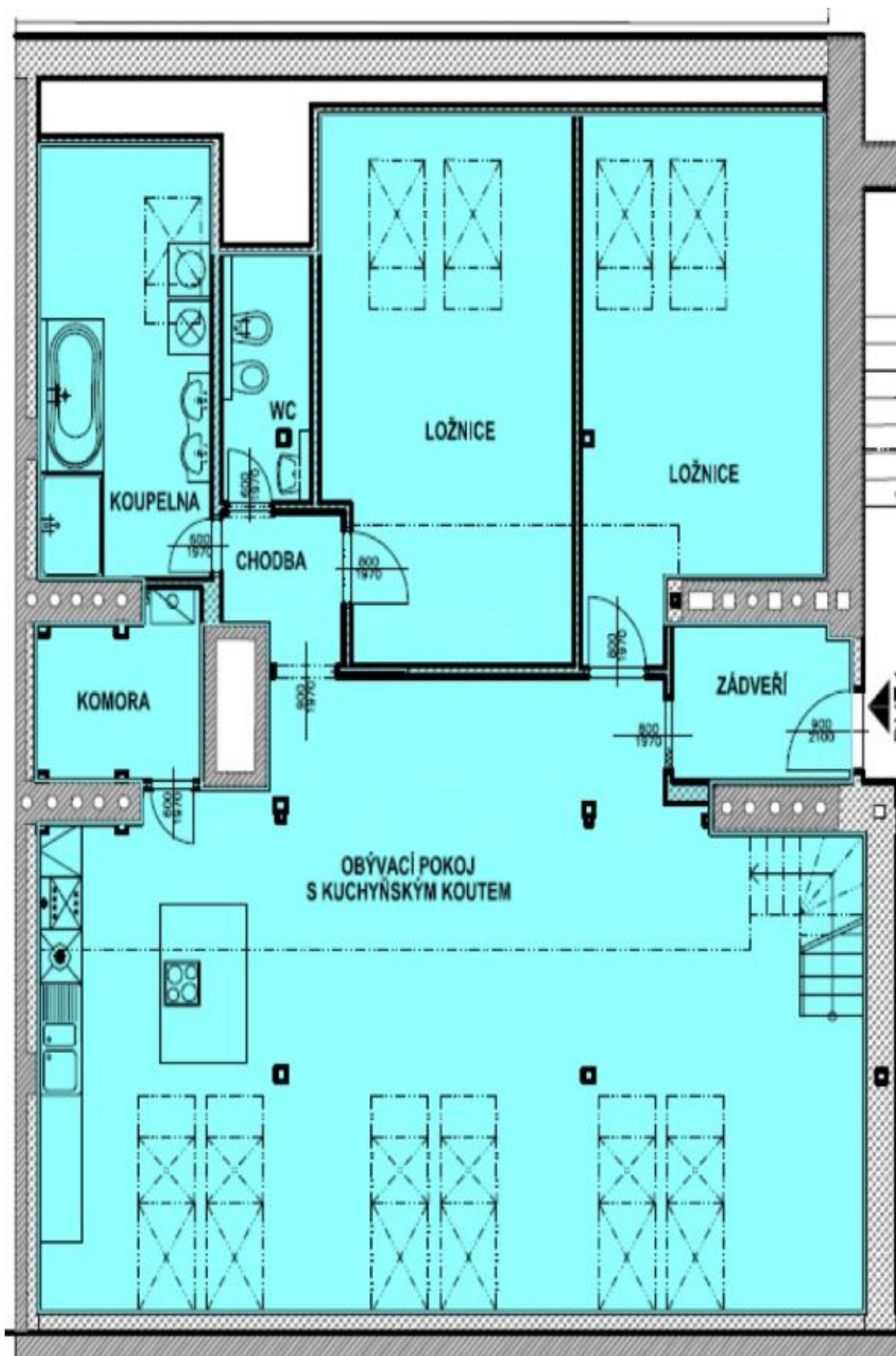




Apartment Four-bedroom (5+kk)

Rented

188 m², Prague 6, Dejvice, Evropská



**Apartment Four-bedroom (5+kk)****Rented**188 m², Prague 6, Dejvice, Evropská

místnost	č.m.	plocha m ²
obýv.p.+kk	2	73,53
ložnice	4	21,52
ložnice	5	19,53
ložnice	11	12,22
pracovna	12	29,22
zádveří	1	4,05
chodba	3	3,45
koupelna	6	12,45
WC	7	4,22
komora	8	3,98
šatna	10	3,84