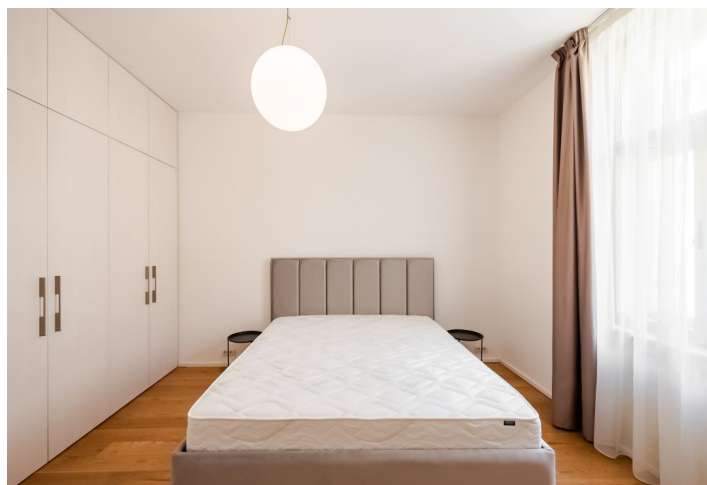




## Apartment Two-bedroom (3+kk)

Rented

95 m<sup>2</sup>, Prague 1, Josefov, Žatecká





## Apartment Two-bedroom (3+kk)

Rented

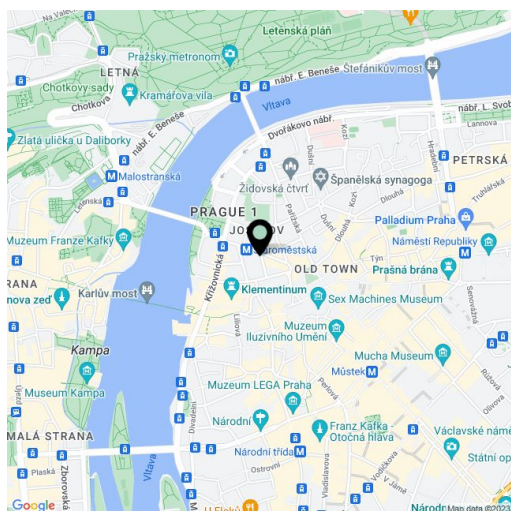
95 m<sup>2</sup>, Prague 1, Josefov, Žatecká

Total area	100 m <sup>2</sup>
Floor area*	95 m <sup>2</sup>
Balcony	5 m <sup>2</sup>
Parking	Parking possible in nearby garages.
Garage	Yes
Cellar	-
Service price	Common building charges CZK 3,630/month. Electricity is billed separately.
PENB	G
Reference number	13830
Available from	Immediately

This completely renovated, furnished 2-bedroom 2-bathroom apartment with a balcony facing the courtyard is situated on the third floor of a fully renovated traditional building with an elevator. Centrally located just steps from the Jewish Cemetery and Old Town Square, the Vltava riverbank, and the Staroměstská metro station.

The apartment includes a fully equipped open plan kitchen, a living room with a historic ceramic stove, a master bedroom with an en-suite shower bathroom, a bedroom with a walk-in closet and access to the balcony, a separate bathroom (bathtub, shower, double sink), a guest toilet, a storage room, and an entry hall.

Wooden floors, stucco ornaments, built-in wardrobes, recessed lighting, washing machine. Available from July 2023.



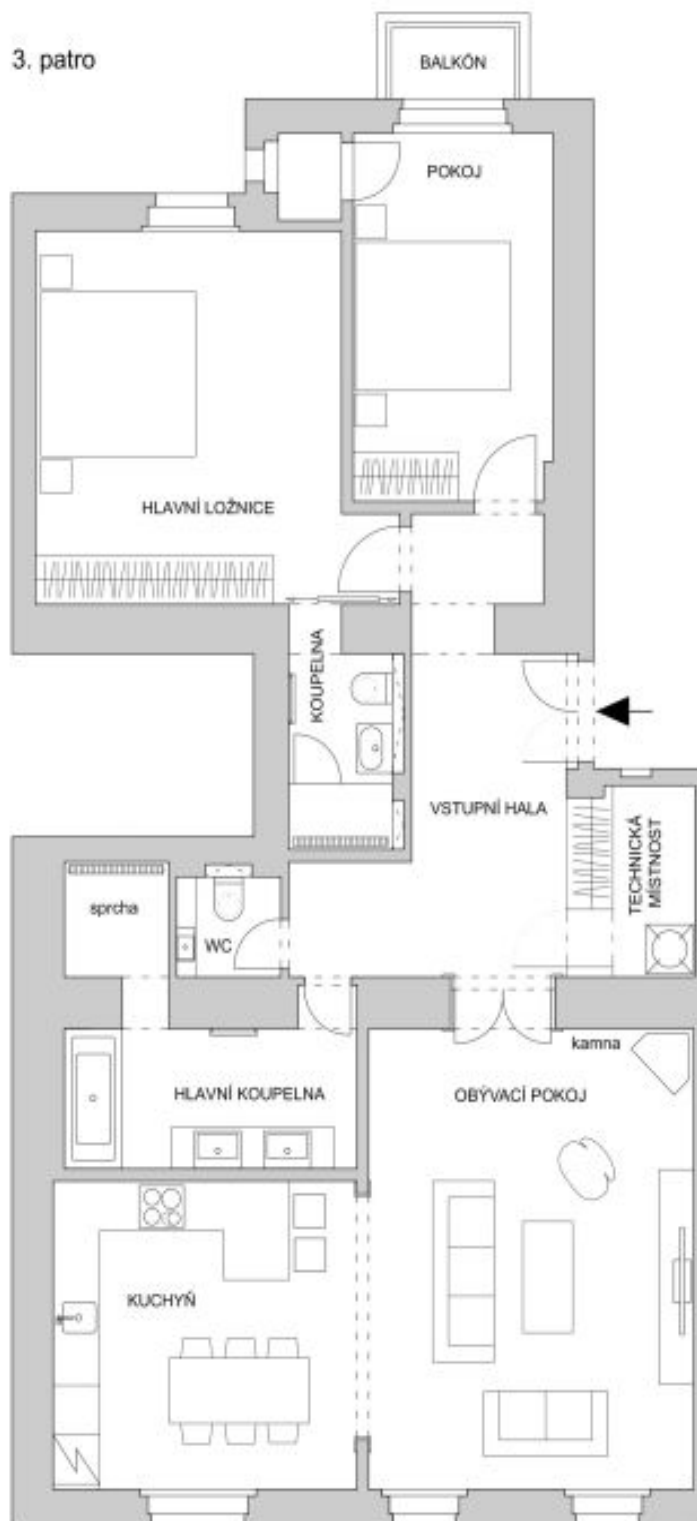
\* Area of the unit according to the Civil Code. The area consists of the sum total area of the entire unit bounded by perimeter walls.



## Apartment Two-bedroom (3+kk)

95 m<sup>2</sup>, Prague 1, Josefov, Žatecká

Rented





## Apartment Two-bedroom (3+kk)

Rented

95 m<sup>2</sup>, Prague 1, Josefov, Žatecká

