



## Apartment Two-bedroom (3+kk)

Sold

93 m<sup>2</sup>, Praha 8, Troja, Trojská





## Apartment Two-bedroom (3+kk)

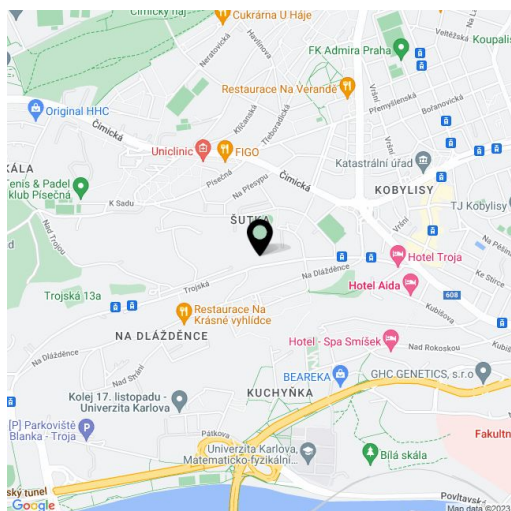
**Sold**93 m<sup>2</sup>, Praha 8, Troja, Trojská

Total area	109 m <sup>2</sup>
Floor area*	93 m <sup>2</sup>
Terrace	16 m <sup>2</sup>
Parking	One garage parking space included in the purchase price.
Garage	Yes
Cellar	Yes
PENB	G
Reference number	13867

**Modern apartment with terrace, 200 m<sup>2</sup> garden and garage parking space in the prestigious residential area of Troja, situated on the ground floor of a smaller residential project with excellent transport links to the city center.**

The apartment offers a living room with kitchen and direct access to the terrace and the garden, one bedroom, spacious entrance hall, bathroom, utility room and a large walk-in closet / 15 m<sup>2</sup> / currently used as a master bedroom. The apartment also includes a **private garden** in a slope accessible through a common garden, with the possibility of building a garden house overlooking the city. **Cellar** and **parking space** are included in the purchase price.

Interior 91.97 m<sup>2</sup>, terrace 16.57 m<sup>2</sup>, private garden 200 m<sup>2</sup>.



\* Area of the unit according to the Civil Code. The area consists of the sum total area of the entire unit bounded by perimeter walls.

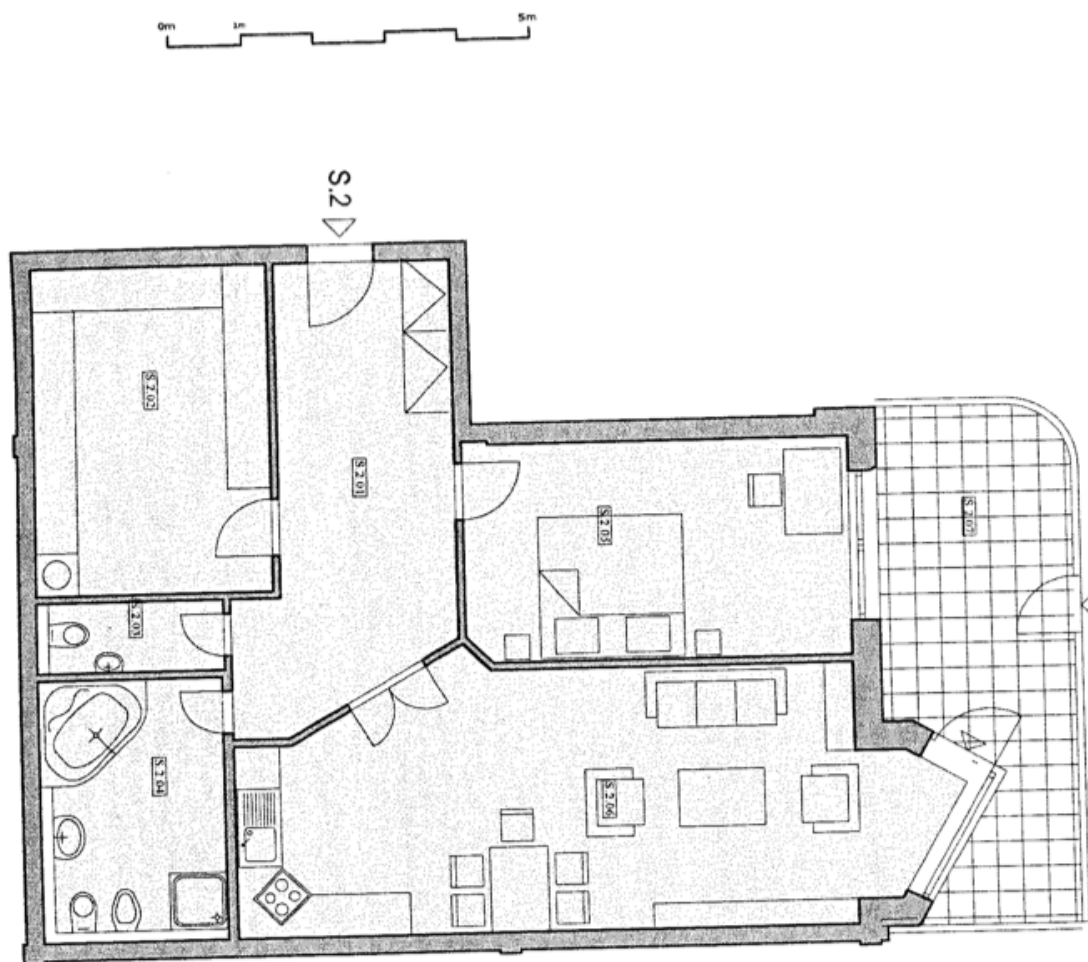




# Apartment Two-bedroom (3+kk)

93 m<sup>2</sup>, Praha 8, Troja, Trojská

Sold



**BYT S.2. --- 2+kk**

Č. M.	NÁZEV MÍSTNOSTI	PLOCHA
S.2.01	predsín	16,22
S.2.02	spálň, priechod	15,27
S.2.03	WC	2,45
S.2.04	koupeľna, WC	8,78
S.2.05	pokoj	16,46
S.2.06	pokoj s kuch. koutkom	32,79
<b>PLOCHA MÍSTNOSTI CELKEM</b>		<b>91,97</b>
S.2.07	terasa	16,57
<b>PLOCHA BYTU S.2. CELKEM</b>		<b>108,54</b>