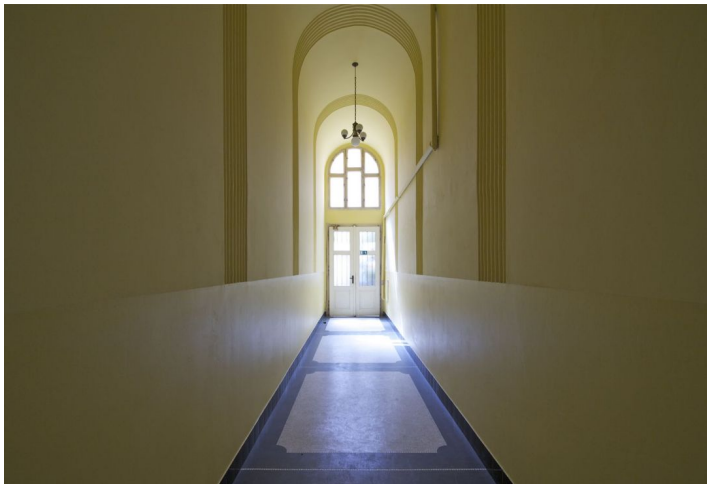
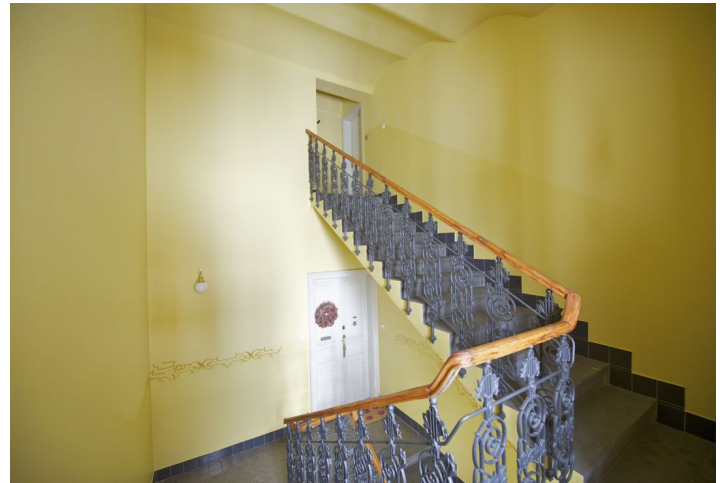




Apartment One-bedroom (2+kk)

72 m², Prague 1, Nové Město, Mikulandská

Rented





Apartment One-bedroom (2+kk)

Rented

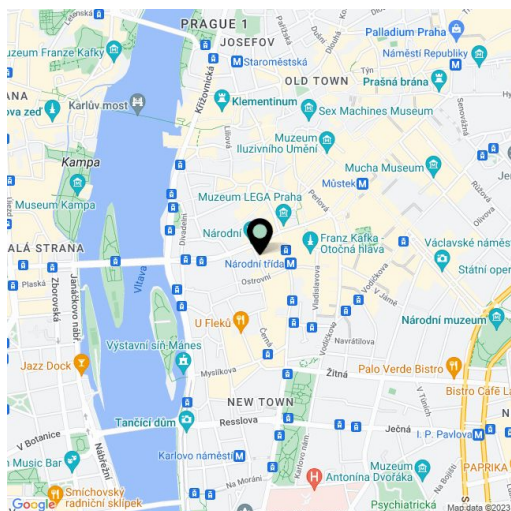
72 m², Prague 1, Nové Město, Mikulandská

Total area	72 m ²
Parking	-
Cellar	-
PENB	G
Reference number	13918
Available from	Immediately

Completely refurbished partly furnished 1-bedroom design attic flat on the 4th floor of a building with no lift right in the Prague city center. Quiet location moments from the Vltava embankment and the National Theatre, with instant tram and metro connections (Národní třída).

The apartment features an open living room with a fully fitted kitchen and eating area, one bedroom with bath tub and sink (separated by a glass partition), separate toilet, and an open entry hall.

Air-conditioning, parquet and tile floors, built-in storage, security door, central switch, atelier windows, washer, Miele kitchen appliances, alarm, video entry phone. Common building charges CZK 1000/person/month. Utilities are billed separately.



* Area of the unit according to the Civil Code. The area consists of the sum total area of the entire unit bounded by perimeter walls.