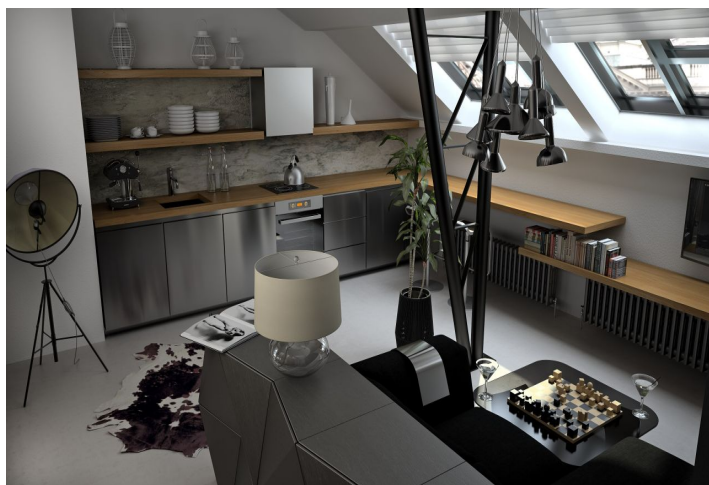




## Apartment One-bedroom (2+kk)

Sold

57 m<sup>2</sup>, Prague 1, Malá Strana, Mostecká



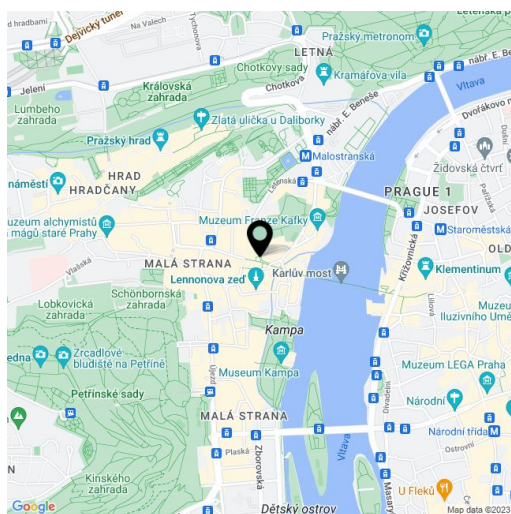


## Apartment One-bedroom (2+kk)

**Sold**57 m<sup>2</sup>, Prague 1, Malá Strana, Mostecká

Total area	57 m <sup>2</sup>
Parking	-
Cellar	-
PENB	G
Reference number	13972

Unique opportunity to live in the historic center of Prague, just steps from the Charles Bridge and Malostranské náměstí Square and at the same time within close proximity to tramlines and a metro station. Modern residence with a central courtyard situated on the old Royal Route with plenty of privacy and tranquility. This apartment on the 5th floor offers entrance hall, open living room with kitchen, one bedroom and a bathroom. The purchase price is for finished show flat by the OOOOX studio. Interior 56.58 m<sup>2</sup>.



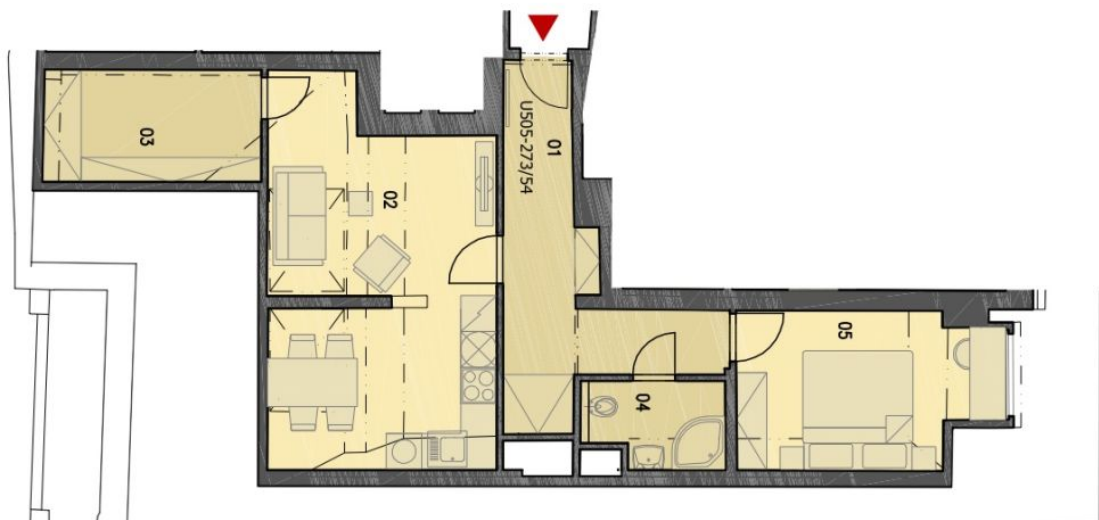
\* Area of the unit according to the Civil Code. The area consists of the sum total area of the entire unit bounded by perimeter walls.



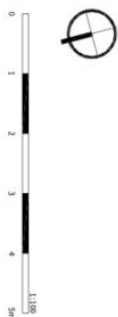
# Apartment One-bedroom (2+kk)

57 m<sup>2</sup>, Prague 1, Malá Strana, Mostecká

Sold



1	PŘEDSÍŇ / HALL	10,83 m <sup>2</sup>
2	OBYVACÍ POKOJ / LIVING ROOM	22,60 m <sup>2</sup>
3	POKOJ / ROOM	6,82 m <sup>2</sup>
4	KOUPELNA / BATHROOM	3,10 m <sup>2</sup>
5	LOŽNICE / BEDROOM	10,9 m <sup>2</sup>
UŽITNÁ PLOCHA / TOTAL AREA		54,25 m <sup>2</sup>



**U.5.05 BYT 3+KK**