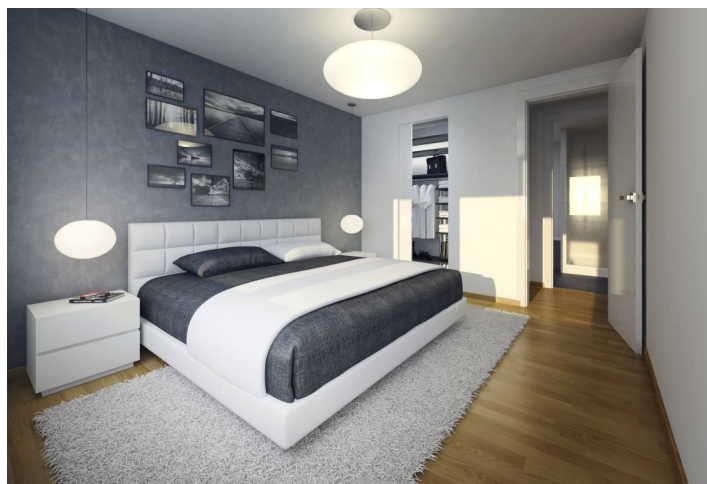




Apartment Two-bedroom (3+kk)

Sold

112 m², Praha 4, Podolí, Na Dolinách





Apartment Two-bedroom (3+kk)

Sold112 m², Praha 4, Podolí, Na Dolinách

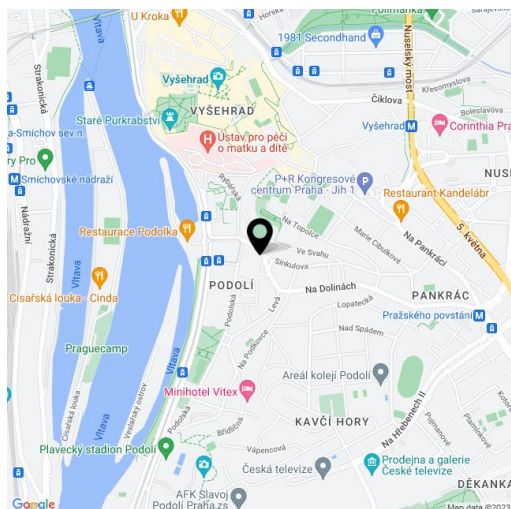
Total area	180 m ²
Floor area*	112 m ²
Terrace	68 m ²
Garden	21 m ²
Parking	1 garage parking space
Garage	Yes
Cellar	-
PENB	G
Reference number	14161

New apartment with terrace, garden and a garage parking space in a prestigious area of Prague 4 - Podolí.

The flat offers an open-space living room, 2 bedrooms, a bathroom, a separate toilet, a terrace and a garden. Features include **wood flooring**, **wooden French windows**, security entrance door, panel radiators, heated ladder towel rail in the bathroom, ample storage space in the hallway and bedrooms, utility room for the washing machine, boiler and hot water tank, a **cellar** and a **garage parking space**.

The apartment is located in a newly built residence with complete public amenities in the immediate neighborhood, along with restaurants, schools, sport opportunities - cycling and inline skating trail, tennis courts, yacht club, swimming pool.

Interior 100 m², terrace 68 m², garden 21 m².



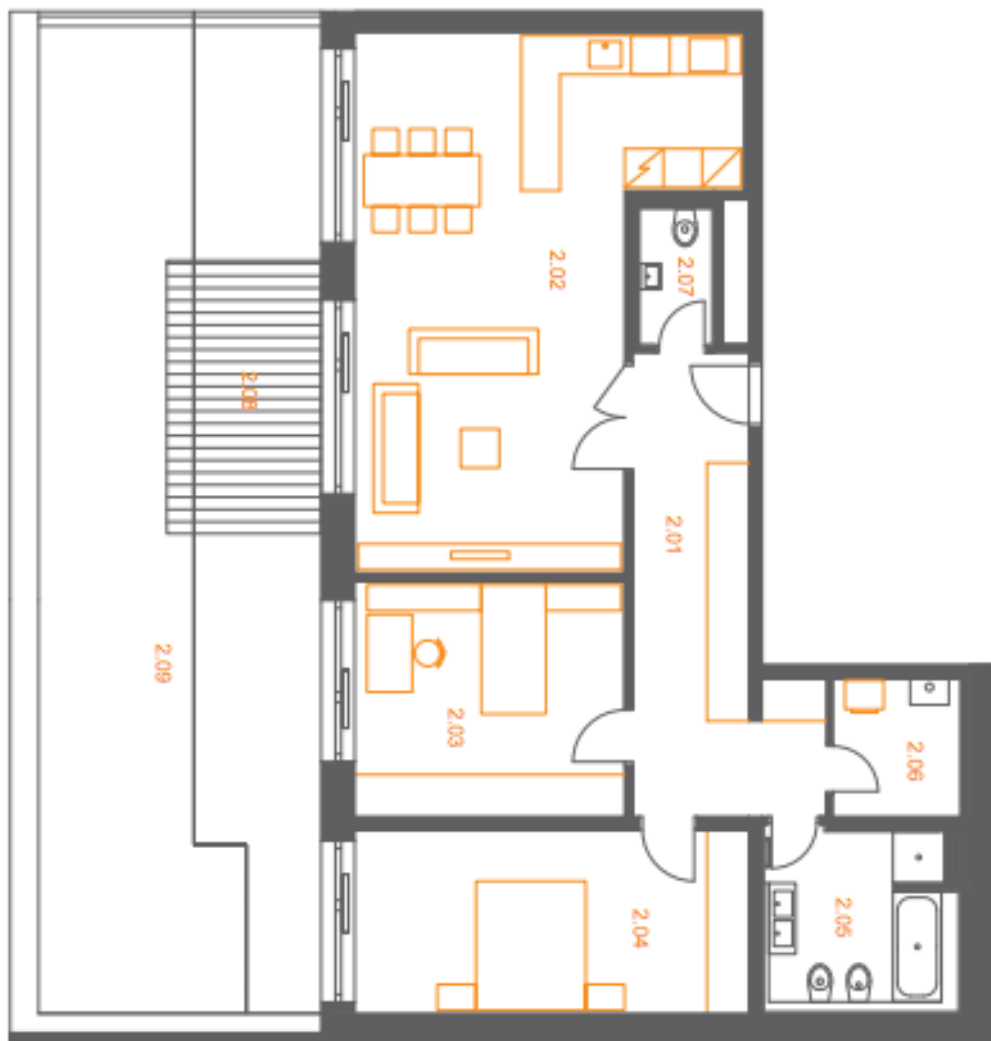
* Area of the unit according to the Civil Code. The area consists of the sum total area of the entire unit bounded by perimeter walls.



Apartment Two-bedroom (3+kk)

112 m², Praha 4, Podolí, Na Dolinách

Sold



Bp1 (1:150)