



## Apartment Two-bedroom (3+kk)

Sold

107 m<sup>2</sup>, Prague 4, Podolí, Na Dolinách





## Apartment Two-bedroom (3+kk)

**Sold**107 m<sup>2</sup>, Prague 4, Podolí, Na Dolinách

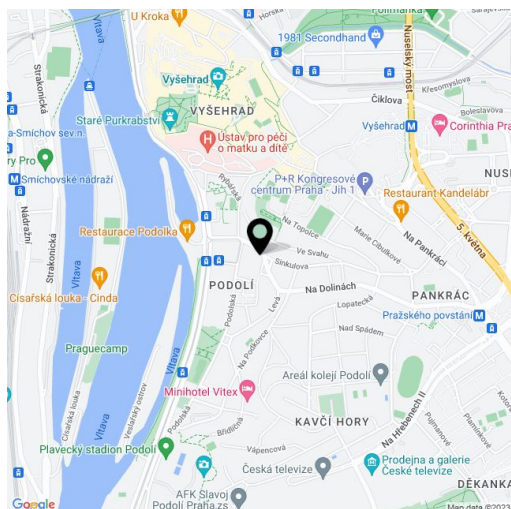
|                  |                    |
|------------------|--------------------|
| Total area       | 123 m <sup>2</sup> |
| Floor area*      | 107 m <sup>2</sup> |
| Terrace          | 16 m <sup>2</sup>  |
| Garden           | 58 m <sup>2</sup>  |
| Parking          | Yes                |
| Garage           | Yes                |
| Cellar           | Yes                |
| PENB             | G                  |
| Reference number | 14167              |

**New apartment with terrace, garden and 2 parking spaces in a prestigious area of Prague 4 - Podolí.**

The flat offers an open-space living room, 2 bedrooms, a bathroom, a separate toilet, a terrace and a garden. Features include wood flooring, wooden French windows, security entrance door, panel radiators, heated ladder towel rail in the bathroom, ample storage space in the hallway and bedrooms, utility room for the washing machine, boiler and hot water tank, a cellar and 2 garage parking spaces.

The apartment is located in a newly built residence, full public amenities in the immediate neighborhood, restaurants, schools, sport opportunities - cycling and inline skating trail, tennis courts, yacht club, swimming pool.

Interior 95 m<sup>2</sup>, terrace 16 m<sup>2</sup>, garden 58 m<sup>2</sup>.



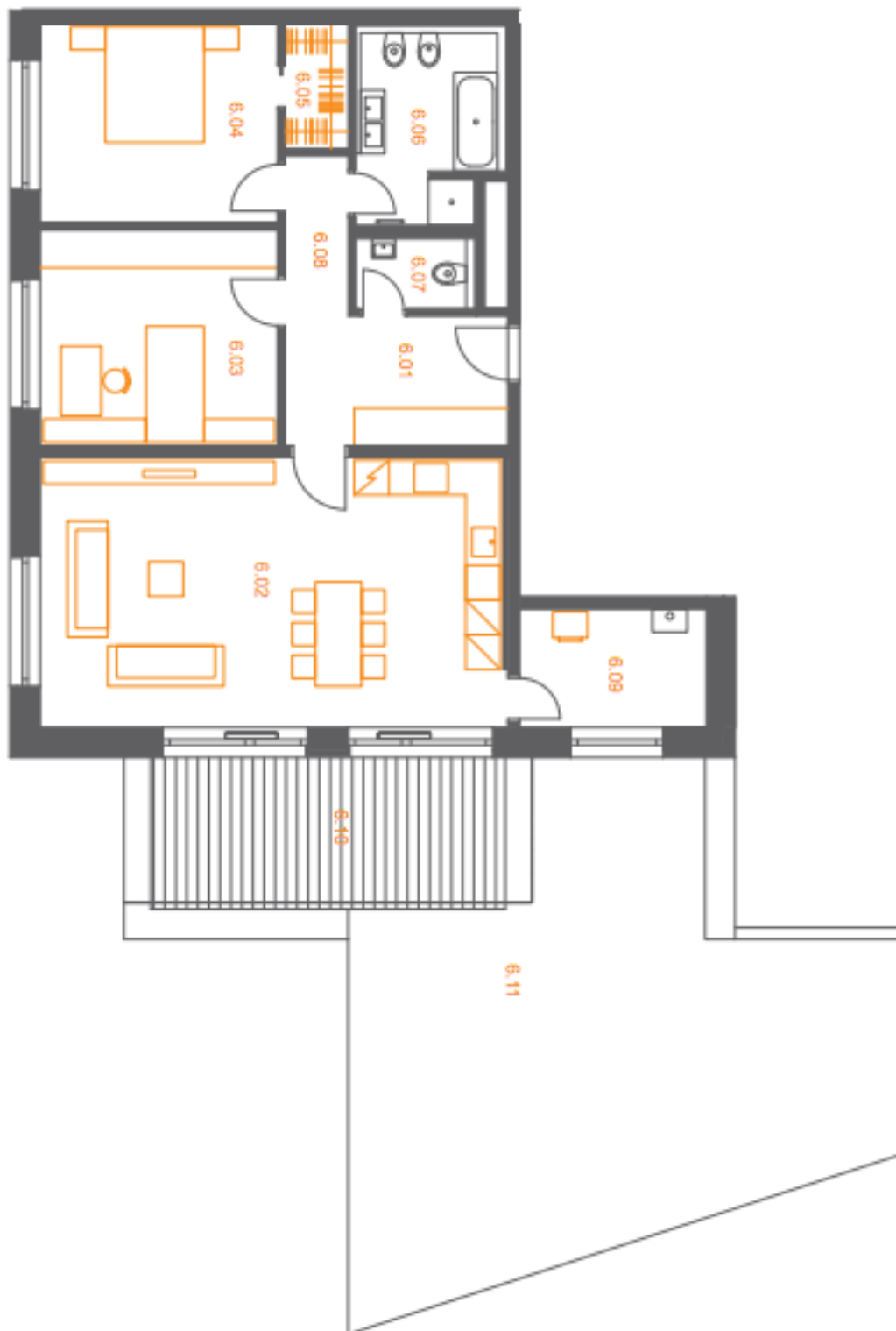
\* Area of the unit according to the Civil Code. The area consists of the sum total area of the entire unit bounded by perimeter walls.



## Apartment Two-bedroom (3+kk)

107 m<sup>2</sup>, Prague 4, Podolí, Na Dolinách

Sold



Byt (1:150)