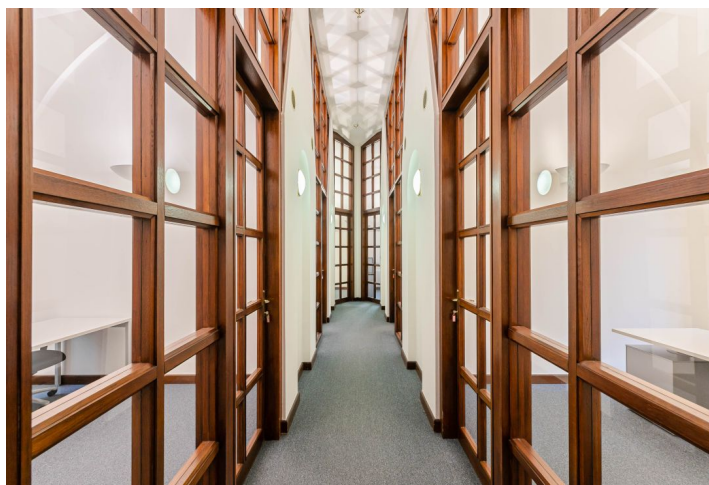


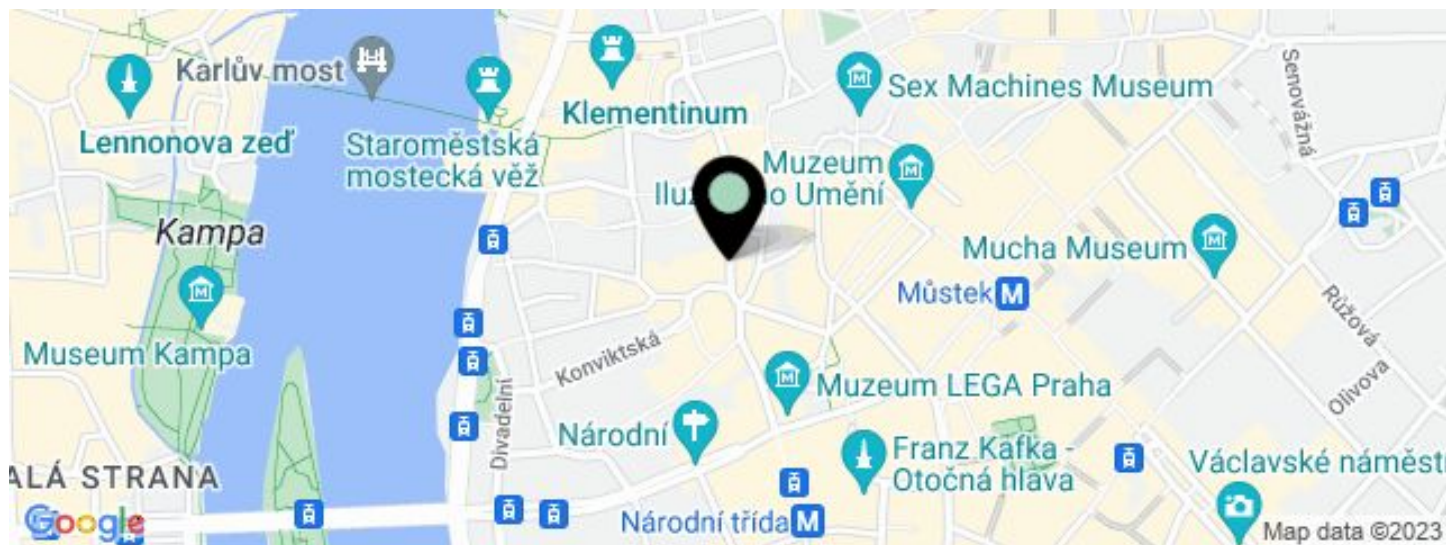


Office building

167 m², Prague 1, Staré Město, Husova

€ 17.00 / m² | CZK 429 / m²



**Office building****€ 17.00 / m² | CZK 429 / m²**167 m², Prague 1, Staré Město, Husova

UNIT	AVAILABLE AREA	SERVICES	PARKING	MONTHLY RENT
Office space, 2nd floor	167 m ²	5 EUR monthly per m ²	Yes	€ 17 / m ²

**Office building**167 m², Prague 1, Staré Město, Husova**€ 17.00 / m² | CZK 429 / m²**

Service price	5 EUR monthly per m ²
Total building area	5 450 m ²
Tenant consumption	—
Parking	Yes
Parking service charges	—
Parking ratio	—
Certification	—
PENB	G
Reference number	14191

Completely reconstructed historic building in the heart of the Old Town. The building with a glass atrium offers both cellular and open-plan office spaces with quality glass partitioning in part (recently installed). The building has 2 lifts, 24-hour security and reception.

Location:

The exclusivity of space is enhanced by an attractive location in the historical city center. Excellent access by public transport – within walking distance (approx. 5 minutes) of major tram hub and metro station Národní třída (line B), and of metro station Můstek (line A, B).

Features and services:

24 hours security + reception
Air conditioning with floor heating
2 passenger lifts
Possibility of parking in the yard

Rental and service charges listed without VAT. Lessee pays no commission.

