



House Five-bedroom (6+1)

Sold

278 m², Prague 6, Suchdol





House Five-bedroom (6+1)

Sold278 m², Prague 6, Suchdol

Usable area	278 m ²
Plot	740 m ²
Foot print	185 m ²
Floor area	250 m ²
Terrace	28 m ²
Parking	Double garage.
Garage	Yes
Cellar	-
PENB	G
Reference number	14252

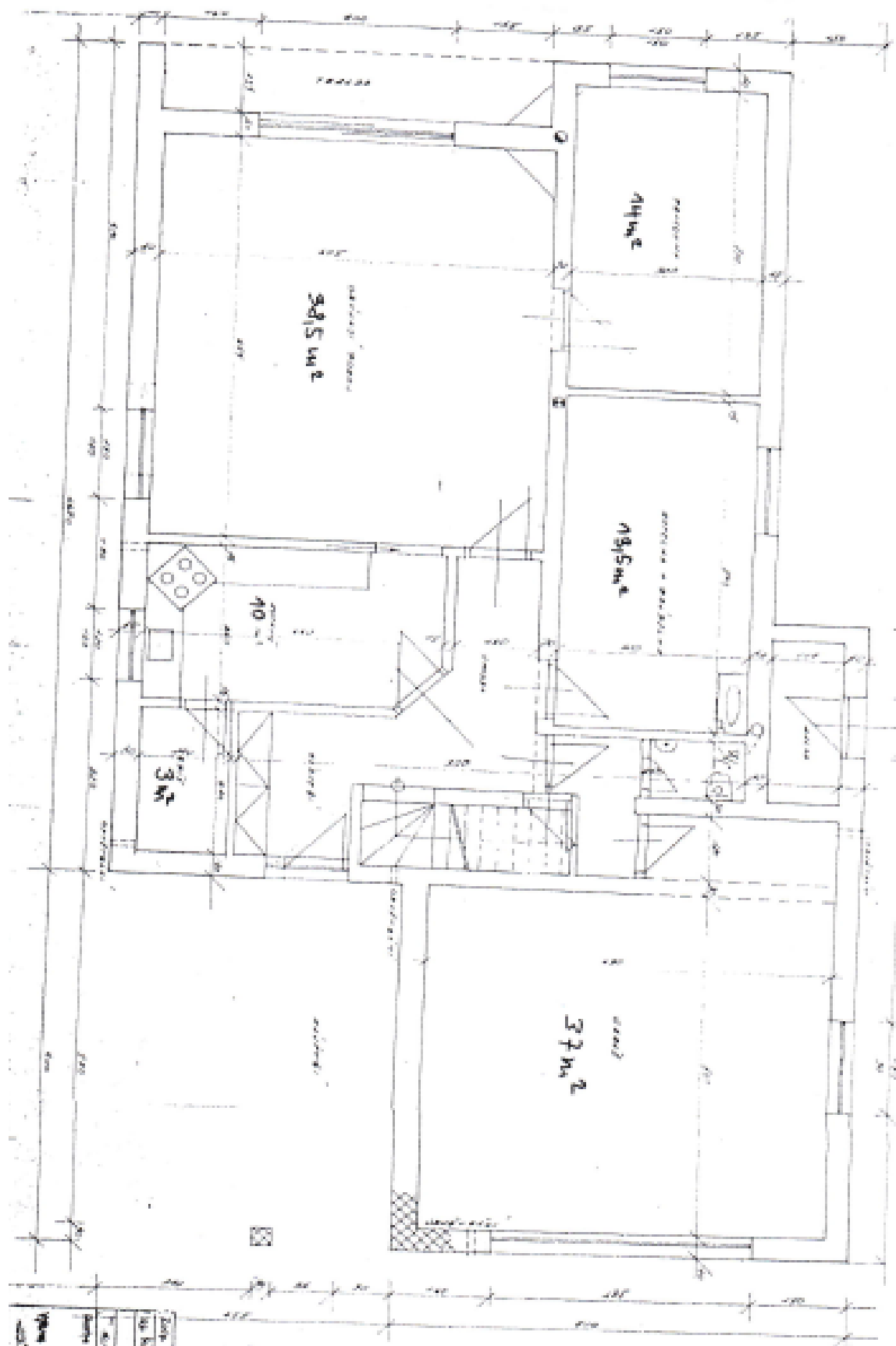
5-bedroom 2-bathroom family house with a landscaped garden located in a green quiet residential area, just a short drive to the city center, the airport, the Riverside School and the International School of Prague. Ground floor: living room with terrace access, guest bedroom/office, fully fitted kitchen with pantry, laundry/boiler room, toilet, entry hall with built-in wardrobes, garage access. First floor: hall, four bedrooms, two of them with a balcony, walk-in closet, full bathroom, shower bathroom with toilet. Large attic storage space, parquet and heated tile floors, security electric roller blinds, blinds, insect nets, gas heating, waste disposal unit, washer/dryer, video entry phone, alarm, automatic irrigation, automatic garage gate, storage space for garden furniture. Floor area 280 m², attic 75 m², balcony + terrace 28 m², foot print 185 m², plot 740 m².



House Five-bedroom (6+1)

278 m², Prague 6, Suchbátov

Sold





House Five-bedroom (6+1)

278 m², Prague 6, Suchbátov

Sold

