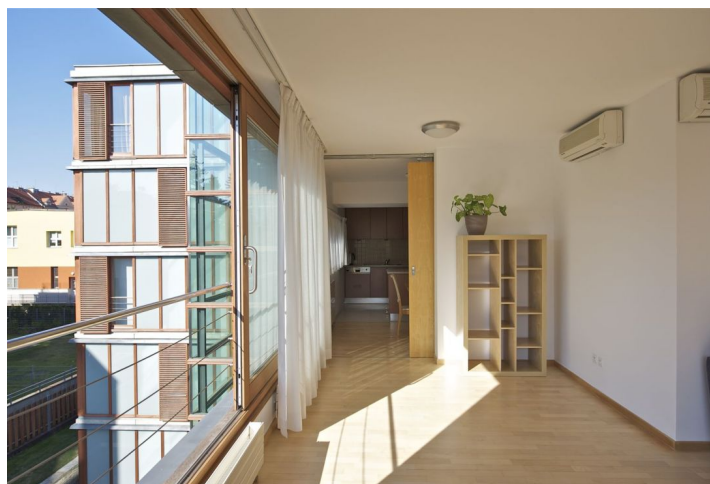




Apartment Two-bedroom (3+1)

Sold

98 m², Prague 6, Bubeneč, Charlese de Gaulla



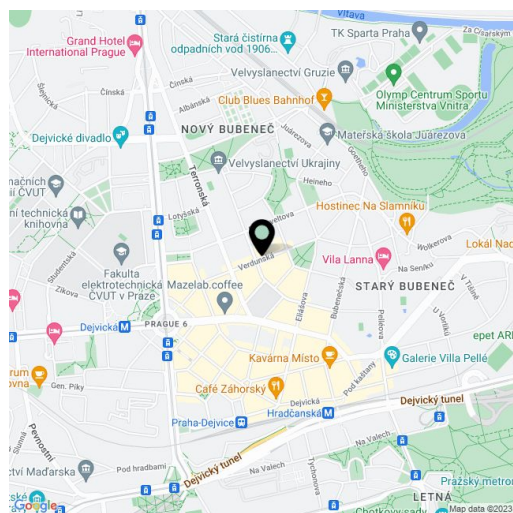


Apartment Two-bedroom (3+1)

Sold98 m², Prague 6, Bubeneč, Charlese de Gaulla

Total area	98 m ²
Parking	2 garage parking spaces included
Garage	Yes
Cellar	-
Service price	6 500 CZK monthly
PENB	G
Reference number	14298

Sunny air-conditioned apartment with beautiful views set in a park-like location in a contemporary 21-unit development, part of the Charles de Gaulle residential project, in Bubeneč. The 3rd floor apartment features 1 bedroom, a large living room with adjacent, separate study, fully fitted kitchen equipped with Miele appliances, 2 bathrooms (one with toilet), guest toilet, and utility room. Cellar, 2 parking spots in underground garages included in the price. The development has many amenities such as good public transportation, schools & shopping. Close to the largest Prague park - Stromovka. Option to combine with neighboring flat and create a larger apartment - for more information contact the broker. Interior 98 m².



* Area of the unit according to the Civil Code. The area consists of the sum total area of the entire unit bounded by perimeter walls.



Apartment Two-bedroom (3+1)

98 m², Prague 6, Bubeneč, Charlese de Gaulla

Sold

