



Office building

Prague 2, Vinohrady, Šafaříkova

Rented



**Office building**

Prague 2, Vinohrady, Šafaříkova

Rented

Service price	95 CZK monthly per m ²
Total building area	2 938 m ²
Tenant consumption	—
Parking	Yes
Parking service charges	—
Parking ratio	—
Certification	—
PENB	G
Reference number	14423

This administrative building with office space for lease situated in Prague 2 is a dominant feature of Bělehradská Street, which connects Vinohrady and Nusle.

This modern, spacious multifunctional building with a prestigious address combines all the advantages of a central Prague location and high standard office space for lease. The interiors offer different layout possibilities or the option of a complete open space – a showroom or separation into smaller sections and offices. The showroom boasts extra large-format glass windows facing Šafaříkova Street.

Location:

The building is easily accessible by public transport and car – in the vicinity of tram stops and within walking distance (approx. 5 minutes) of the I. P. Pavlova (line C) and Namesti Miru (line A) metro stations. Easy connection to the Prague highway. Good civic amenities in the area – many restaurants, shops, and other services. A popular park, Havlíčkovy sady, is nearby.

Features and services:

- central reception
- security, CCTV
- magnetic card access
- elevators
- entrance to the terrace
- partially openable windows
- external blinds
- fan-coil units
- fiber optic network
- kitchenette, toilets, and handy storage
- parking in underground garages

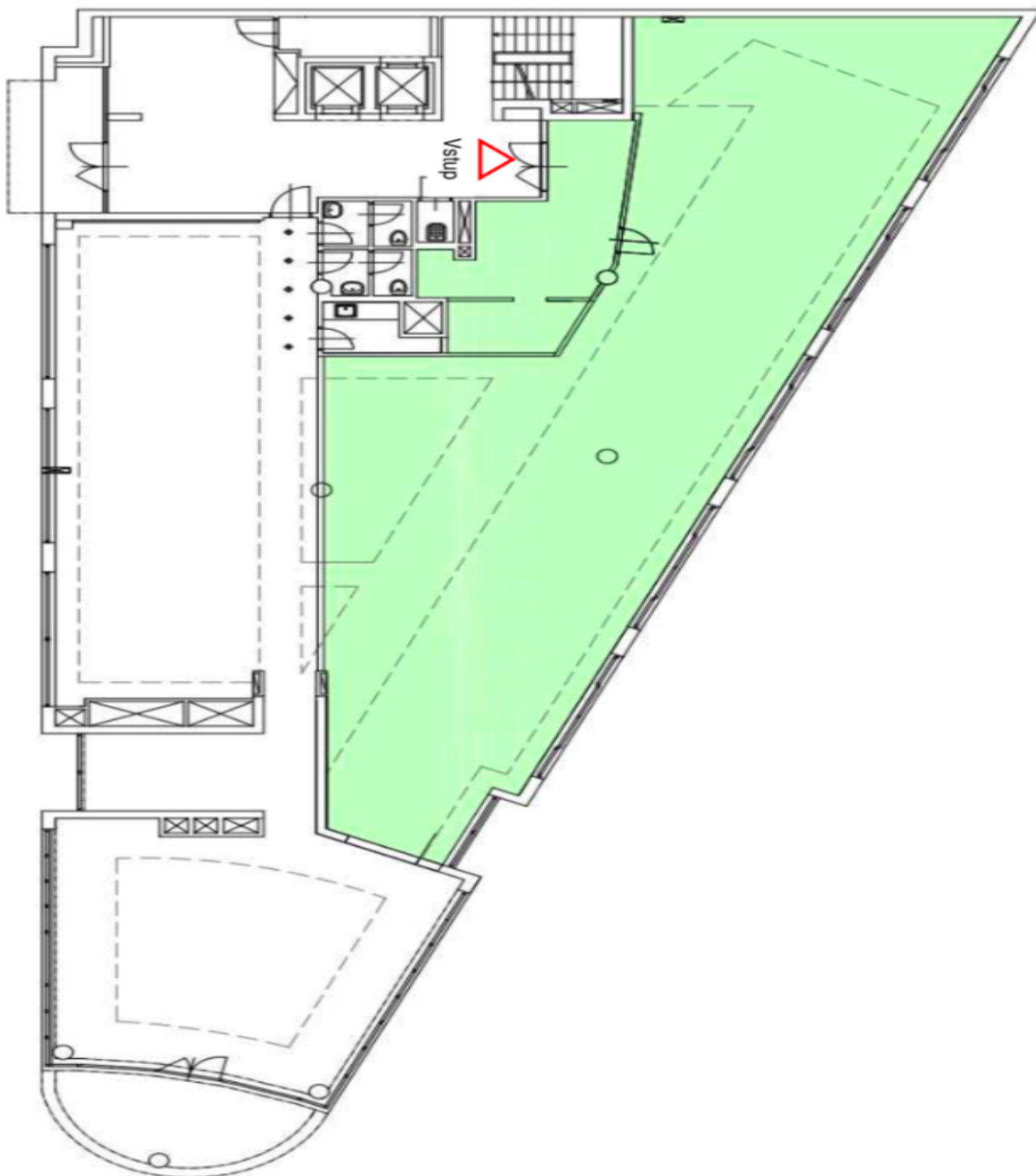
Rental and service charges listed without VAT. Lessee pays no commission.



Office building

Prague 2, Vinohrady, Šafaříkova

Rented





Office building

Prague 2, Vinohrady, Šafaříkova

Rented

