



## Apartment Four-bedroom (5+1)

Sold

143 m<sup>2</sup>, Praha 10, Vršovice, Slovinská



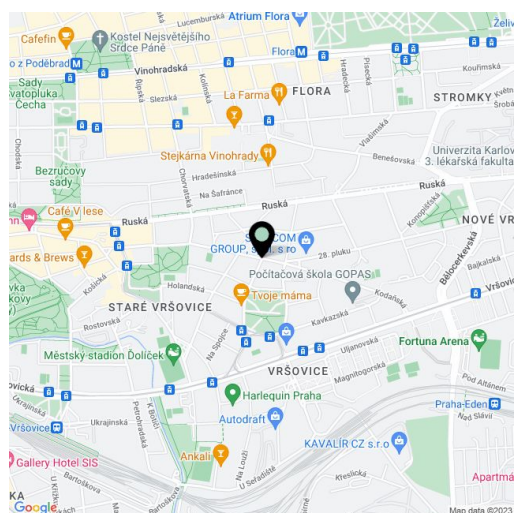


## Apartment Four-bedroom (5+1)

**Sold**143 m<sup>2</sup>, Praha 10, Vršovice, Slovinská

Total area	182 m <sup>2</sup>
Floor area*	143 m <sup>2</sup>
Terrace	39 m <sup>2</sup>
Parking	-
Cellar	-
PENB	G
Reference number	1457

Well proportioned attic duplex with a terrace offering panoramic views over Prague, suitable for family living. Situated on the 5th floor of apartment building minutes from náměstí Svatopluka Čecha Square, 10 minute tram journey to the city center. The 4-bedroom apartment has an open-plan living room, fully fitted kitchen and dining area, 4 bedrooms, bathroom, 2 toilets and storage room. Quality material, wooden floors, tiles, gas boiler, security entry door, ample storage space. Interior 130,8 m<sup>2</sup>, storage space 12 m<sup>2</sup>, terrace 39,3 m<sup>2</sup>.



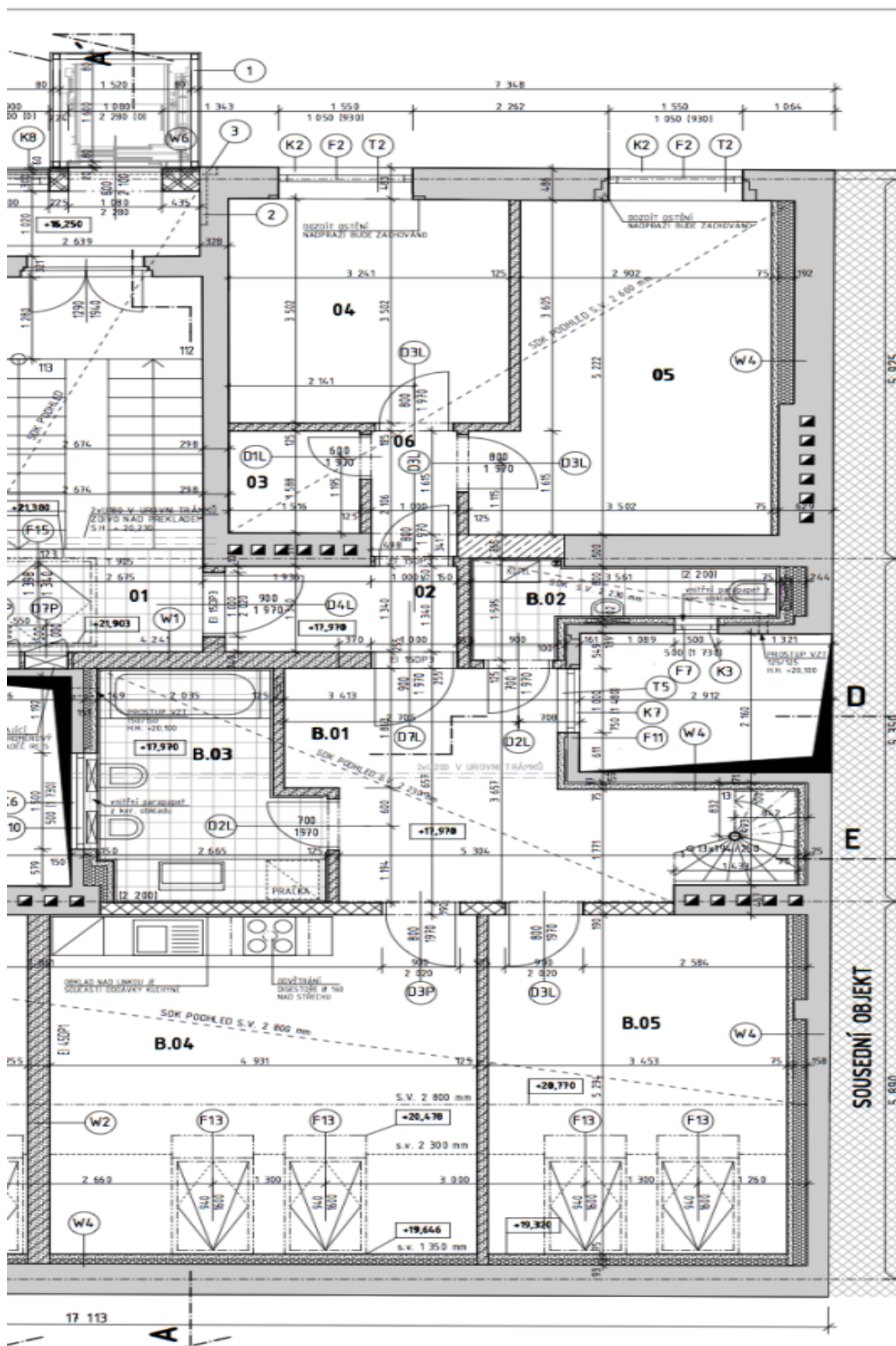
\* Area of the unit according to the Civil Code. The area consists of the sum total area of the entire unit bounded by perimeter walls.



# Apartment Four-bedroom (5+1)

143 m<sup>2</sup>, Praha 10, Vršovice, Slovinská

Sold







# Apartment Four-bedroom (5+1)

143 m<sup>2</sup>, Praha 10, Vršovice, Slovinská

Sold

