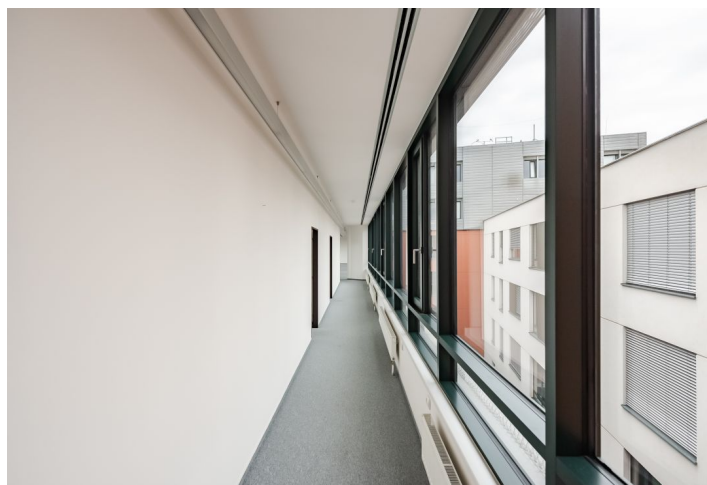
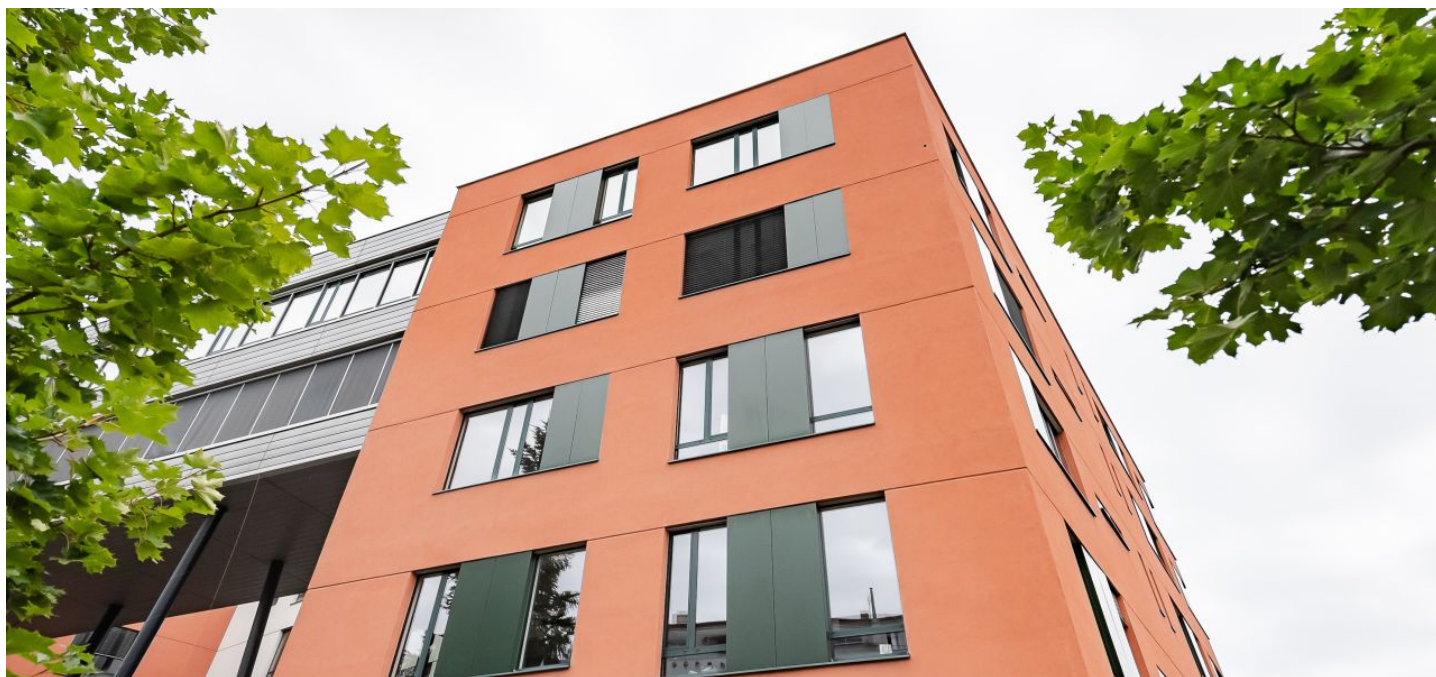




Office building

Prague 4, Krč, Antala Staška

Ask for price





Office building

Prague 4, Krč, Antala Staška

Ask for price

Total building area	6 800 m ²
Tenant consumption	—
Parking	Yes
Parking service charges	—
Parking ratio	—
Certification	—
PENB	G
Reference number	14586

Modern office complex situated in a highly dynamic location of Prague 4. Offices are of the highest international standard, both in design and the technical side, focusing on maximum flexibility and efficiency.

Location:

The building is close to the Budějovická metro station (line C), in vicinity of bus stops. Easily accessible from the Prague Ring Road and the D1 highway.

Features and Services:

- Air-conditioning
- Raised floors
- Suspended ceilings
- Openable windows
- Automatic blinds
- Structured cabling
- 2 reception desks 24/7
- Full security systém
- Facility management in the building
- Card entry systém
- Elevators
- Canteen
- Warehouse space
- Parking space is available under the building and next to the building

Rental and service charges listed without VAT. Lessee pays no commission.

