



Office space

Praha 4, Nusle, Hvězdova

Rented



**Office space**

Praha 4, Nusle, Hvězdova

Rented

Service price	170 CZK monthly per m ²
Available area	445 m ²
Cellar	-
Parking	EUR 110 / pp / month
PENB	G
Reference number	14598

Modern office space for lease on the 2nd floor in building located in highly sought after business location in Prague 4. Offices are equipped with individual temperature control. Building amenities include reception and security 24/7, magnetic card access, raised floor with floorboxes, equipped kitchenette. No Add-on factor.

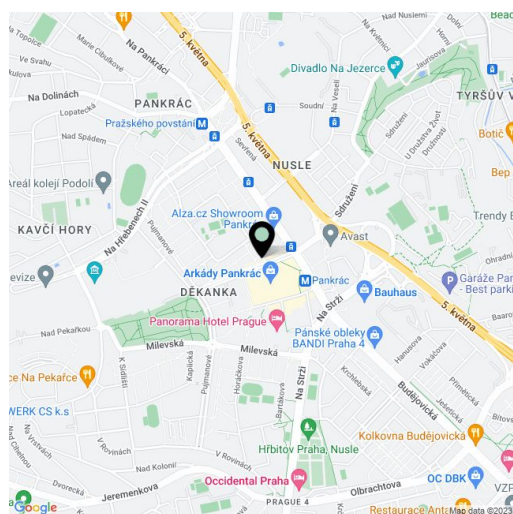
Location:

Excellent access by all means of transportation (Pankrác metro station, line C, buses and trams, D1 highway access). The area offers a wide range of services including restaurants, cafés, shops, congress centers, hotels, banks, sports and leisure facilities.

Features and services:

- Air conditioning
- Doufle floor
- Lowered ceiling
- Reception
- Security 24/7
- Magnetic card access

Rental and service charges listed without VAT. Lessee pays no commission.

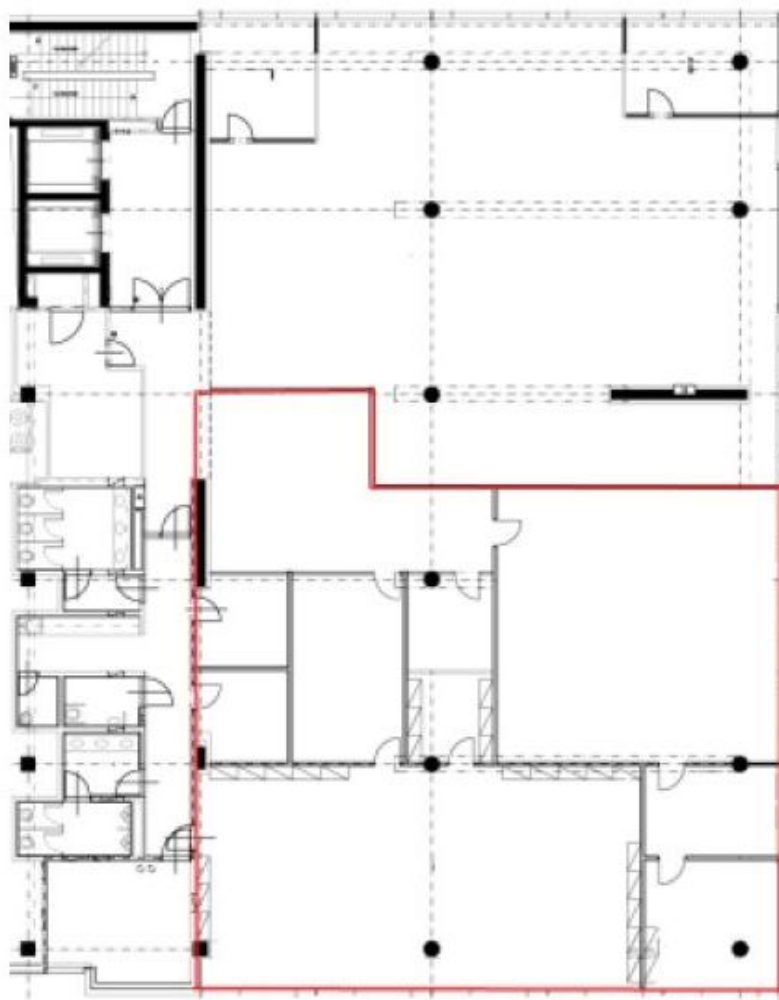




Office space

Praha 4, Nusle, Hvězdova

Rented



Layout 2nd Floor