



House Three-bedroom (4+kk)

€ 297 993 | CZK 7 499 000

137 m², Prague 10, Benice, Žitavská





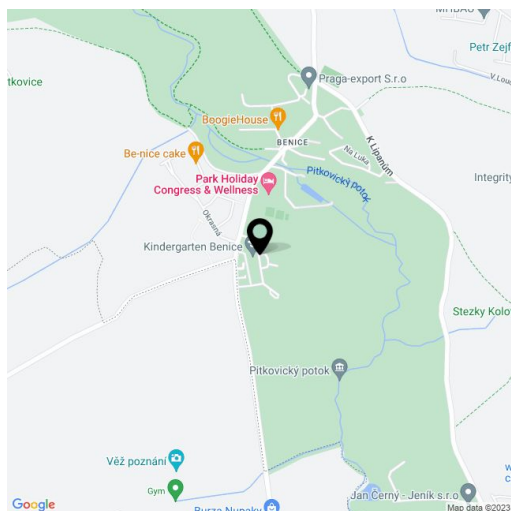
House Three-bedroom (4+kk)

€ 297 993 | CZK 7 499 000

137 m², Prague 10, Benice, Žitavská

Plot	682 m ²
Parking	Yes
Garage	Yes
Cellar	-
PENB	G
Reference number	14695

Family semidetached house with a garden and a garage is located in the architecturally unified and impressive residential area at the outskirts of Prague. Good connection to Prague: 15 minutes by car (highway D1), within the reach of shopping area Čestlice and all public amenities in Průhonice. There is an entrance hall, kitchen, living room with terrace on the ground floor, guest toilet and storage room. The first floor consists of 3 bedrooms, 2 bathrooms. The property is offered completely finished, ready to move within 4 months. Interior 137 m², plot 682 m².

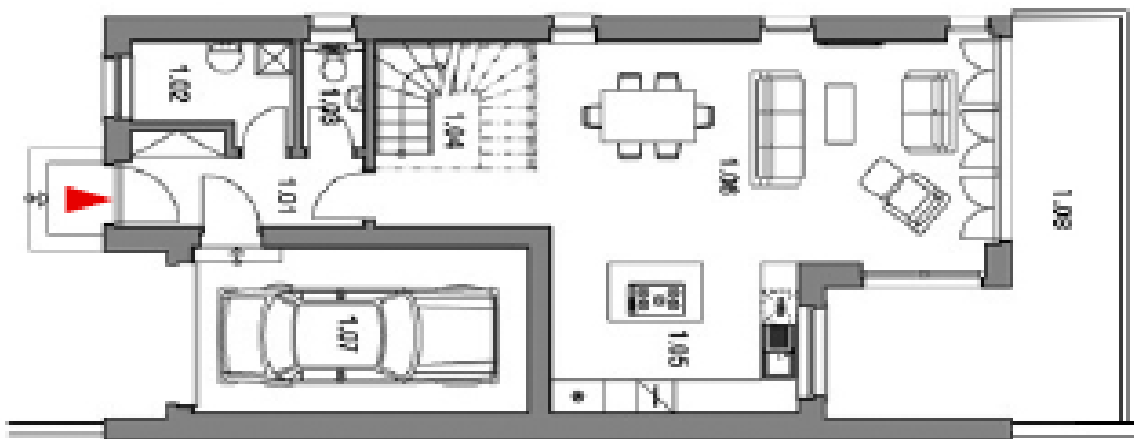




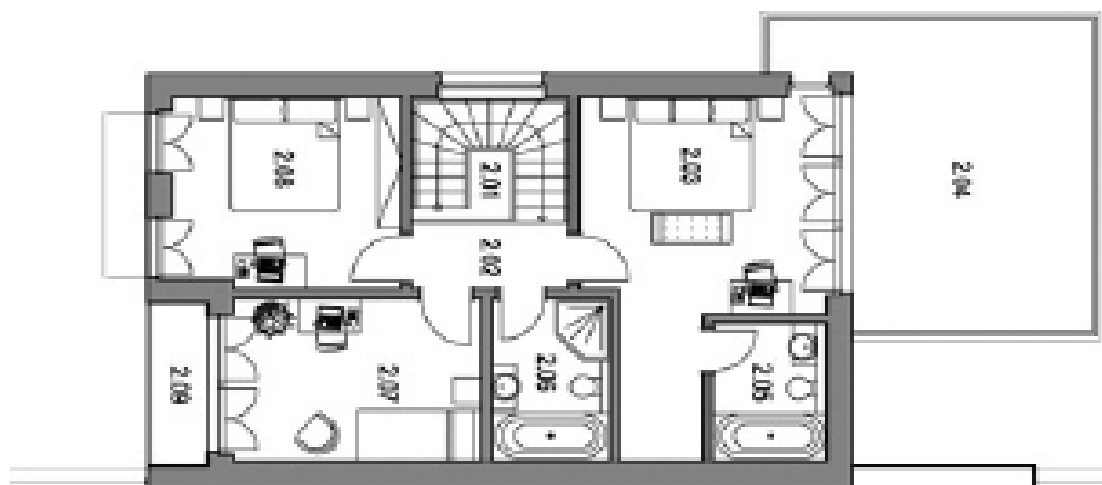
House Three-bedroom (4+kk)

€ 297 993 | CZK 7 499 000

137 m², Prague 10, Benice, Žitavská



— —





House Three-bedroom (4+kk)

€ 297 993 | CZK 7 499 000

137 m², Prague 10, Benice, Žitavská

