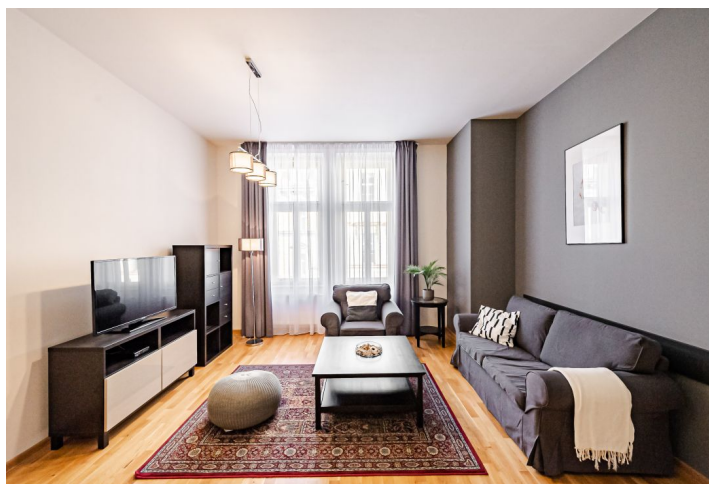




## Apartment Two-bedroom (3+kk)

Rented

65 m<sup>2</sup>, Prague 2, Vinohrady, Moravská





## Apartment Two-bedroom (3+kk)

Rented

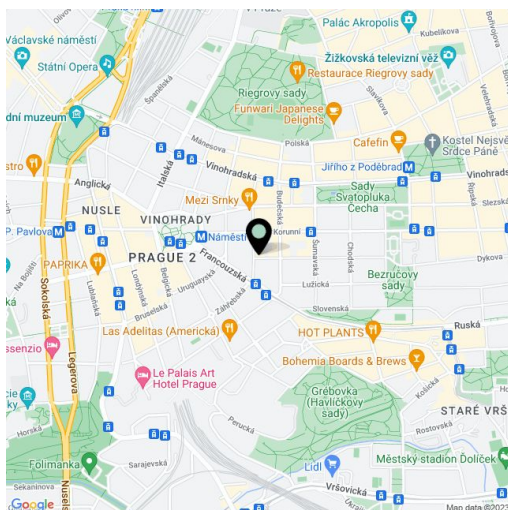
65 m<sup>2</sup>, Prague 2, Vinohrady, Moravská

Total area	65 m <sup>2</sup>
Parking	Parking available.
Cellar	-
Service price	Services CZK 3,400/month. Utilities (gas, electricity, water) CZK 2,420/person/month.
PENB	G
Reference number	14748
Available from	Immediately

This renovated, completely furnished apartment is on the 3rd floor of a completely reconstructed traditional building with an elevator is conveniently located in Vinohrady, a highly sought-after residential area popular with the expat community, moments from the trams and metro at Náměstí Míru Square. Very quick connection to the city center, full amenities in the area.

The interior features a living room with a fully fitted open plan kitchen, a master bedroom facing the courtyard, a second smaller bedroom, a bathroom with a bathtub and toilet, and an entrance hall.

High ceilings, large windows, laminate floors, built-in wardrobes, security entry door, washer, dishwasher, TV. Garage parking can be arranged at CZK 2,000/month + VAT.



\* Area of the unit according to the Civil Code. The area consists of the sum total area of the entire unit bounded by perimeter walls.