



Apartment One-bedroom (2+kk)

Rented

71 m², Prague 3, Vinohrady, Laubova





Apartment One-bedroom (2+kk)

Rented71 m², Prague 3, Vinohrady, Laubova

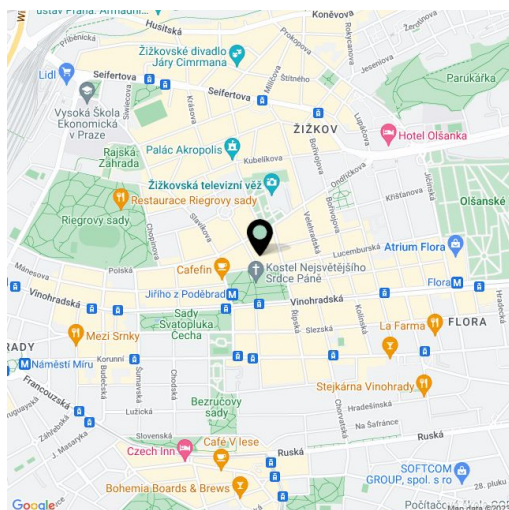
Total area	86 m ²
Floor area*	71 m ²
Terrace	15 m ²
Parking	-
Cellar	-
PENB	G
Reference number	14788
Available from	Immediately

Brand new architect designed 1-bedroom apartment with a 15 m² patio facing the quiet courtyard on the upper ground floor of a newly fully refurbished classic building with a lift.

Conveniently located in a quiet part of the popular residential area of Vinohrady with full amenities, just steps from Jiřího z Poděbrad metro station, a short walk to Riegrovy Sady Park.

With quality materials and finishes, the apartment features a fully fitted open plan kitchen with integrated appliances and lots of cupboard space, living room with terrace access, one bedroom with built-in wardrobes and terrace access, shower bathroom with toilet, bidet and closet/laundry room, and entry hall with built-in wardrobes.

Tall clean lines, wood floors, French windows, security door, recessed lighting, central switch, washer, dryer, satellite and Internet connection, alarm that can be connected to a security agency, video entry phone. Design by the renowned Donlic studio. Can be furnished at a higher rent. Common building charges CZK 1000/person/month and deposit for utilities CZK 4000/month.



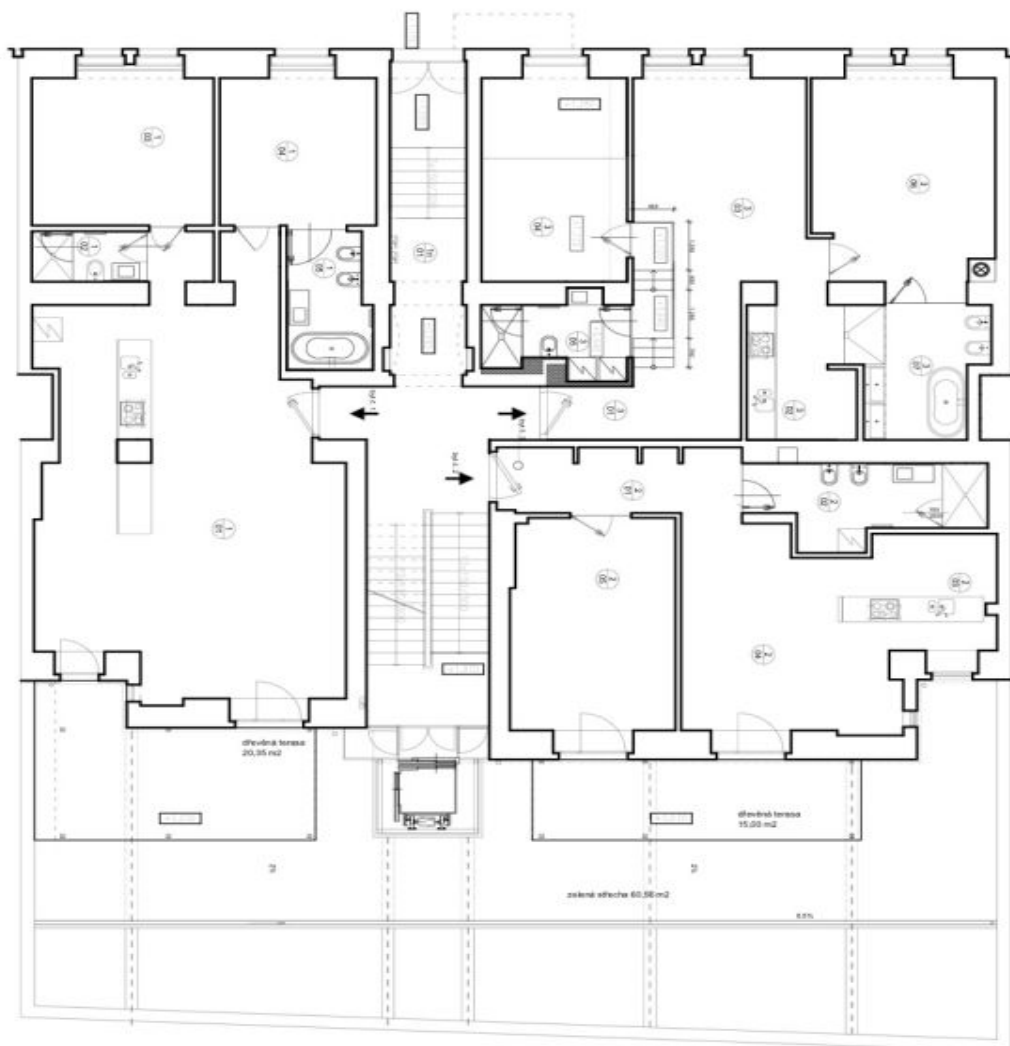
* Area of the unit according to the Civil Code. The area consists of the sum total area of the entire unit bounded by perimeter walls.



Apartment One-bedroom (2+kk)

71 m², Prague 3, Vinohrady, Laubova

Rented



1.NP

BYT 1.1			
OZN.	NÁSTROJ	m ²	PODLAHA
101	dřevěná podla s kuchyní	40,25	dřevěná parkety
102	koupelna I.	3,35	dřevěná parkety
103	ložnice I.	14,81	dřevěná parkety
104	lož. - II.	13,37	dřevěná parkety
105	koupelna II.	7,00	dřevěná parkety
BYT 1.1 celkem		58,78	

BYT 1.2			
OZN.	NÁSTROJ	m ²	PODLAHA
201	chodba	0,88	dřevěná parkety
202	koupelna	9,37	kámen dlažba
203	kuchyně + jídelna	16,10	dřevěná parkety
204	dřevěná podla	14,20	dřevěná parkety
205	ložnice	20,78	dřevěná parkety
BYT 1.2 celkem		71,43	

BYT 1.3			
OZN.	NÁSTROJ	m ²	PODLAHA
301	chodba	11,19	dřevěná parkety
302	kuchyně	6,57	dřevěná parkety
303	dřevěná podla + jídelna	22,32	dřevěná parkety
304	ložnice I.	17,65	dřevěná parkety
305	koupelna I.	5,87	kámen dlažba
306	ložnice II.	11,60	dřevěná parkety
307	koupelna II.	9,40	kámen dlažba
BYT 1.3 celkem		96,53	

BYT 1.4			
OZN.	NÁSTROJ	m ²	PODLAHA
401	chodba + ložnice	40,38	keramika