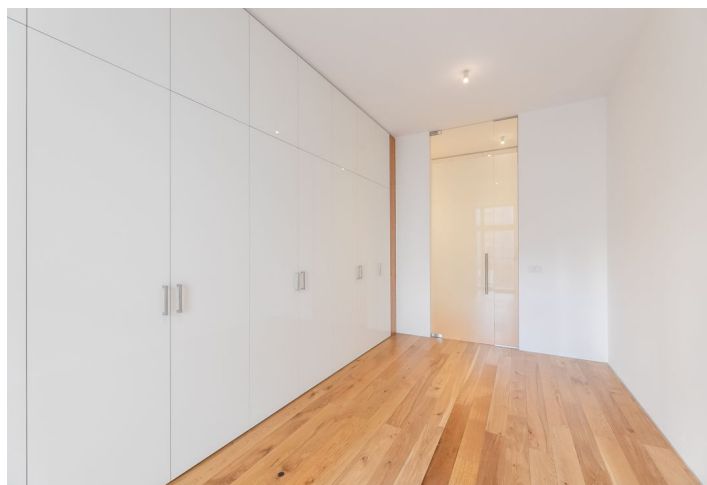




Apartment One-bedroom (2+kk)

€ 1 858 | CZK 47 000

74 m², Praha 3, Vinohrady, Laubova





Apartment One-bedroom (2+kk)

€ 1 858 | CZK 47 000

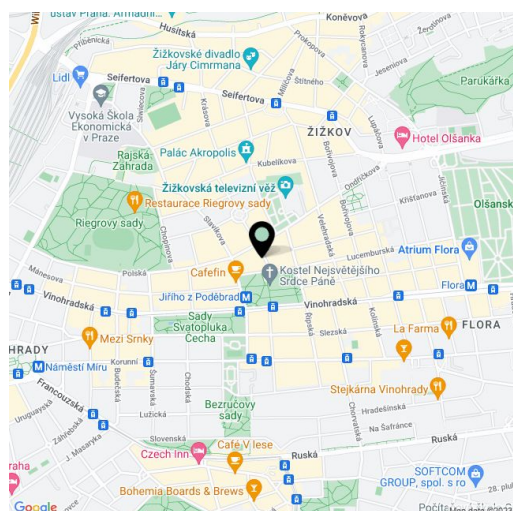
74 m², Praha 3, Vinohrady, Laubova

Total area	89 m ²
Floor area*	74 m ²
Terrace	15 m ²
Parking	On-site parking available.
Garage	Yes
Cellar	-
Service price	Deposit for utilities CZK 7,000/month.
PENB	G
Reference number	14791
Available from	Immediately

Designer apartment with a 15 m² terrace facing the quiet courtyard on the 1st floor of a fully refurbished classic building with an elevator. Conveniently located in a quiet part of a popular residential area of Vinohrady with full amenities, mere steps from the Jiřího z Poděbrad metro station, a short walk to Riegrovy Sady Park.

With quality materials and finishes, the apartment features a fully fitted open plan kitchen with integrated appliances and lots of cupboard space, a living room with access to the terrace, one bedroom with built-in wardrobes and terrace access, a shower bathroom with a toilet, bidet, and a closet/laundry room, and an entry hall with built-in wardrobes.

Wooden floors, French windows, security door, recessed lighting, central switch, washer, dryer, satellite and Internet connection, alarm that can be connected to a security agency, video entry phone. **One garage parking space** in the building available at CZK 5,000/month.



* Size of the unit according to the Housing Act.

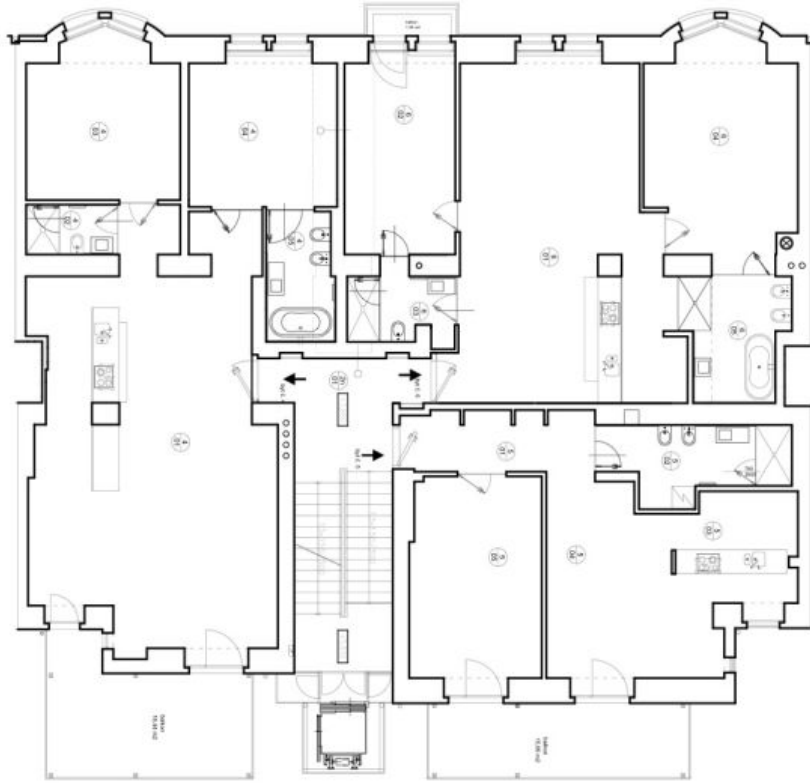
The area consists of the sum total of the internal area of every room.



Apartment One-bedroom (2+kk)

€ 1 858 | CZK 47 000

74 m², Praha 3, Vinohrady, Laubova



2.NP

BR7.6.A		
OZN.	NÁSTAVOST	m ²
401	obývací pokoj s kuchyní	69,90
402	ložnice I.	3,97
403	ložnice II.	16,00
404	ložnice III.	17,22
405	ložnice IV.	6,43
BR7.6.A celkem		
		113,52

BR7.6.B		
OZN.	NÁSTAVOST	m ²
501	obývací pokoj	8,97
502	ložnice	9,38
503	obývací pokoj	16,00
504	obývací pokoj	14,23
505	obývací pokoj	20,96
BR7.6.B celkem		
		79,54

BR7.6.C		
OZN.	NÁSTAVOST	m ²
601	obývací pokoj s kuchyní	51,77
602	ložnice I.	16,93
603	ložnice II.	5,72
604	ložnice III.	24,38
605	ložnice IV.	9,17
BR7.6.C celkem		
		107,97

BR7.6.D		
OZN.	NÁSTAVOST	m ²
701	obývací pokoj s kuchyní	26,43
702	ložnice I.	16,93
703	ložnice II.	5,72
704	ložnice III.	24,38
705	ložnice IV.	9,17
BR7.6.D celkem		
		82,63