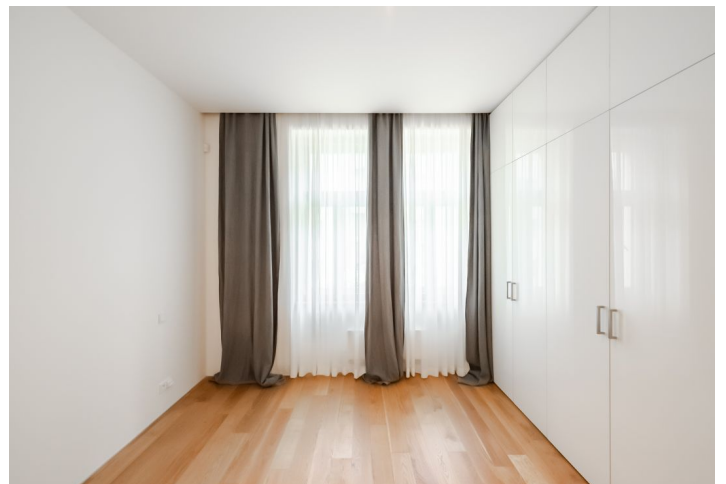




Apartment Two-bedroom (3+kk)

Rented

117 m², Prague 3, Vinohrady, Laubova





Apartment Two-bedroom (3+kk)

Rented

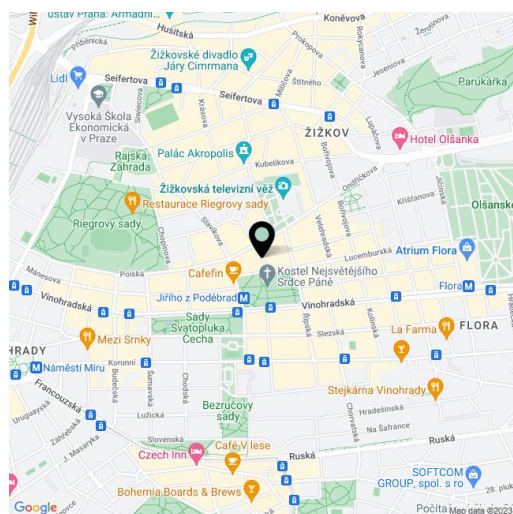
117 m², Prague 3, Vinohrady, Laubova

Total area	135 m ²
Floor area*	117 m ²
Terrace	18 m ²
Parking	Parking available at CZK 5,000/month.
Garage	Yes
Cellar	Yes
Service price	Deposit for common building charges and utilities CZK 5,000/month.
PENB	G
Reference number	14793
Available from	Immediately

This designer apartment with 2 bathrooms and a terrace is on the 2nd floor of a fully refurbished classic building with an elevator conveniently located in a quiet part of the popular residential area of Vinohrady with full amenities, mere steps from the Jiřího z Poděbrad metro station, a short walk to Riegrovy Sady Park.

With quality materials and finishes, the apartment features a living room with a fully fitted open plan kitchen and access to the terrace, two bedrooms with built-in wardrobes, a bathroom with a bathtub, bidet, and toilet, a shower bathroom with a toilet, and an entry hall.

Tall clean lines, wooden floors, security door, recessed lighting, central switch, washer, dryer, satellite and Internet connection, alarm that can be connected to a security agency, video entry phone. Available from June 2nd, 2023.



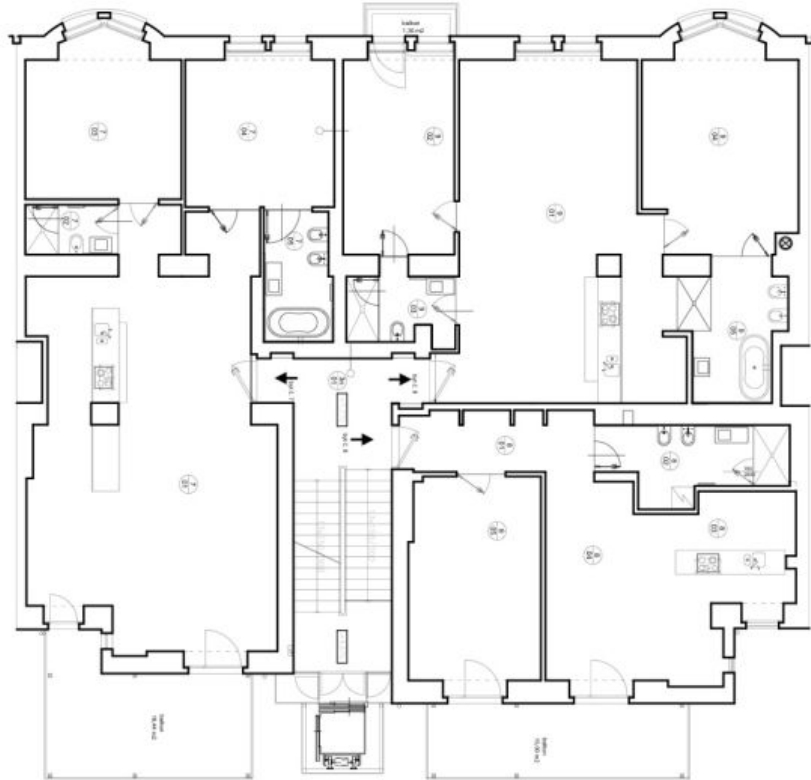
* Area of the unit according to the Civil Code. The area consists of the sum total area of the entire unit bounded by perimeter walls.



Apartment Two-bedroom (3+kk)

117 m², Prague 3, Vinohrady, Laubova

Rented



3.NP

BRT 6.7		
ČZM	MĚSTVOST	PODLAHA
7101	depravní právní a kuchyně	70,07
7102	kuchyně I.	3,80
7103	ložnice I.	16,48
7104	ložnice II.	17,40
7105	kuchyně II.	6,53
BRT 6.7 celkem		118,36

BRT 6.8		
ČZM	MĚSTVOST	PODLAHA
8101	chodba	8,80
8102	kuchyně	9,34
8103	ložnice + jídelna	16,44
8104	depravní právní	14,27
8105	ložnice	20,32
BRT 6.8 celkem		71,77

BRT 6.9		
ČZM	MĚSTVOST	PODLAHA
9101	depravní právní a kuchyně	51,91
9102	ložnice I.	17,07
9103	kuchyně I.	5,75
9104	ložnice II.	23,79
9105	kuchyně II.	8,02
BRT 6.9 celkem		106,54
SAVN1	schodiště	26,43
		koridory