



Apartment Two-bedroom (3+kk)

€ 2 349 | CZK 59 000

108.44 m², Prague 3, Vinohrady, Laubova





Apartment Two-bedroom (3+kk)

€ 2 349 | CZK 59 000

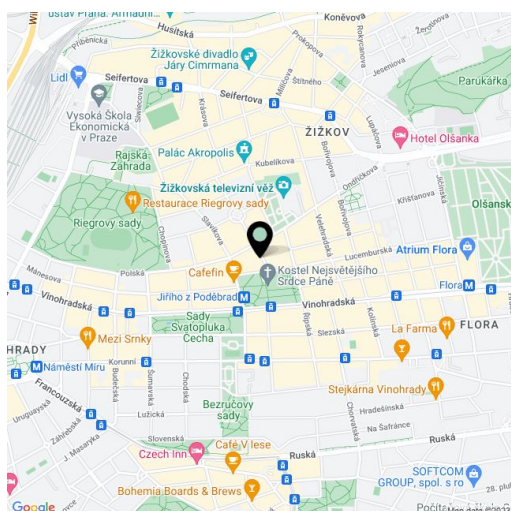
108.44 m², Prague 3, Vinohrady, Laubova

Total area	110 m ²
Floor area*	108 m ²
Balcony	2 m ²
Parking	Parking possible.
Garage	Yes
Cellar	-
Service price	Deposit for services and utilities CZK 10,000/month.
PENB	D
Reference number	14796
Available from	Immediately

This contemporary, partly furnished 2-bathroom apartment with a balcony designed by an architect is on the 2nd floor of a fully refurbished classic building with an elevator conveniently located in a quiet part of the popular residential area of Vinohrady with full amenities, just steps from the Jiřího z Poděbrad metro station (five min. to the city center), and a short walk to Riegrovy Sady Park. Designed by the renowned Donlic studio.

With quality materials and finishes, the interior features a living room with a fully fitted open plan kitchen with integrated appliances and plenty of cupboard space, two bedrooms with built-in wardrobes, a full bathroom, a shower bathroom with a toilet, a laundry cupboard, and an entry hall.

Wooden floors, security entry door, recessed lighting, central switch, washer, dryer, satellite connection, alarm that can be connected to a security agency, video entry phone. Parking available at CZK 5,000/month.



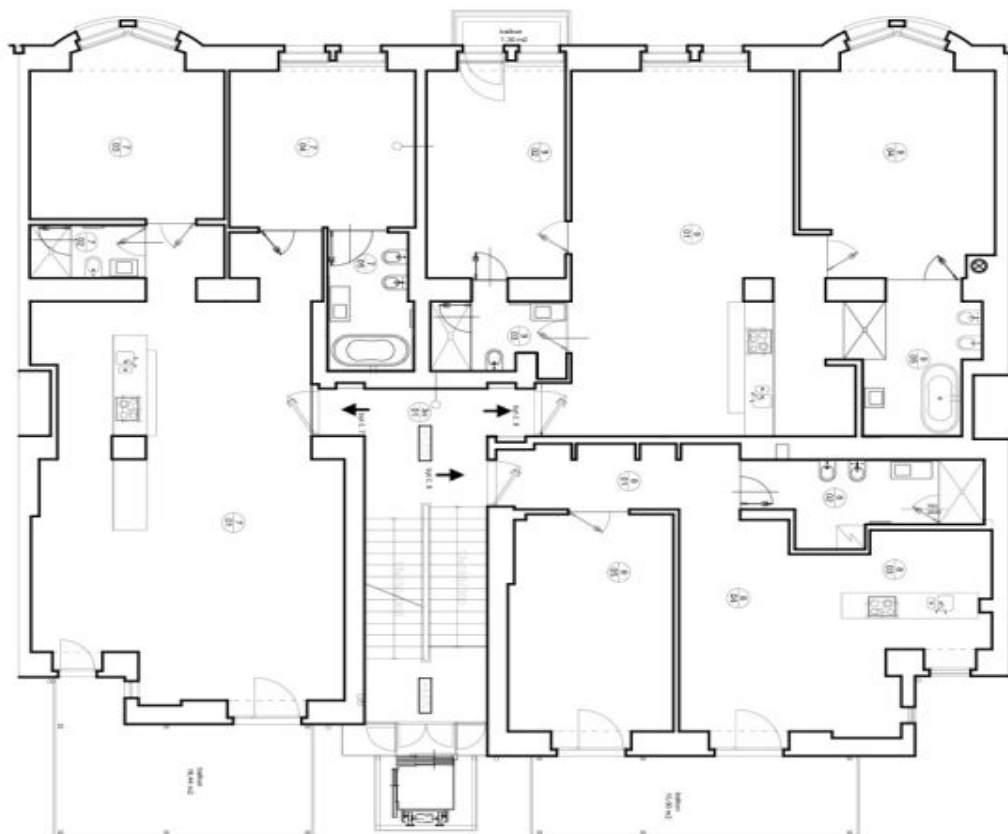
* Area of the unit according to the Civil Code. The area consists of the sum total area of the entire unit bounded by perimeter walls.



Apartment Two-bedroom (3+kk)

€ 2 349 | CZK 59 000

108.44 m², Prague 3, Vinohrady, Laubova



3.NP

BYT 2.7		PODLAHA	
CZM	MÍSTNOST	m ²	dfw. parkový
7101	obývací pokoj s kuchyní	70,07	
7102	spalovna I.	13,50	keřem, dřevěná
7103	ložnice I.	16,46	dfw. parkový
7104	ložnice II.	17,40	dfw. parkový
7105	spalovna II.	6,59	keřem, dřevěná
BYT 2.7 celkem		146,06	

BYT 2.8		PODLAHA	
CZM	MÍSTNOST	m ²	dfw. parkový
8101	chodba	8,98	
8102	spalovna	9,34	keřem, dřevěná
8103	kuchyně + jídelna	16,44	dfw. parkový
8104	obývací pokoj	14,27	dfw. parkový
8105	ložnice	20,92	dfw. parkový
BYT 2.8 celkem		71,27	

BYT 2.9		PODLAHA	
CZM	MÍSTNOST	m ²	dfw. parkový
9101	obývací pokoj s kuchyní	51,91	
9102	ložnice I.	17,07	dfw. parkový
9103	spalovna I.	6,35	keřem, dřevěná
9104	ložnice II.	23,79	dfw. parkový
9105	spalovna II.	9,92	keřem, dřevěná
BYT 2.9 celkem		109,44	

SPRIT		MĚROU	
SPRIT	svoboda	26,43	