



Apartment Two-bedroom (3+kk)

Rented

116 m², Praha 3, Vinohrady, Laubova





Apartment Two-bedroom (3+kk)

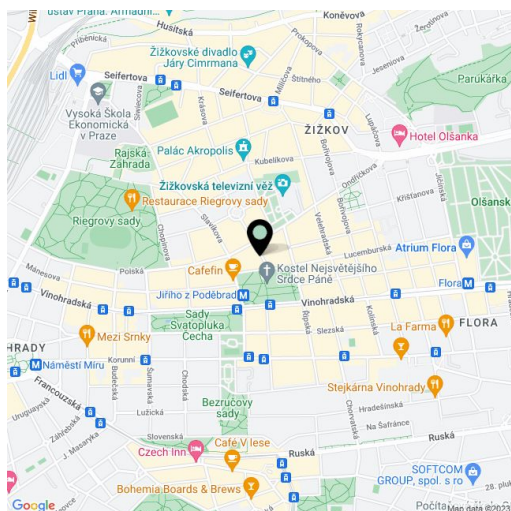
Rented116 m², Praha 3, Vinohrady, Laubova

Total area	134 m ²
Floor area*	116 m ²
Balcony	18 m ²
Parking	Parking available.
Garage	Yes
Cellar	-
Service price	Common building charges and deposit for utilities CZK 8,000/month.
PENB	G
Reference number	14801
Available from	Immediately

This 2-bedroom 2-bathroom partly furnished apartment designed by an architect with a terrace and balcony is on the 4th floor of a fully refurbished classic building with an elevator. Conveniently located in a quiet part of the popular residential area of Vinohrady with full amenities, mere steps from the Jiřího z Poděbrad metro station, a short walk to Riegrovy Sady Park.

With quality materials and finishes, the apartment features a living room with a fully fitted open plan kitchen and access to the terrace, two en-suite bedrooms with built-in wardrobes, one with a balcony, a full bathroom, a shower bathroom with a toilet, and a utility cupboard.

Tall clean lines, wooden floors, security door, recessed lighting, central switch, washer, dryer, satellite and Internet connection, alarm that can be connected to a security agency, video entry phone. Designed by the renowned Donlic studio. Can be furnished at a higher rent. Parking available at CZK 5,000/month. Available from mid December 2022.



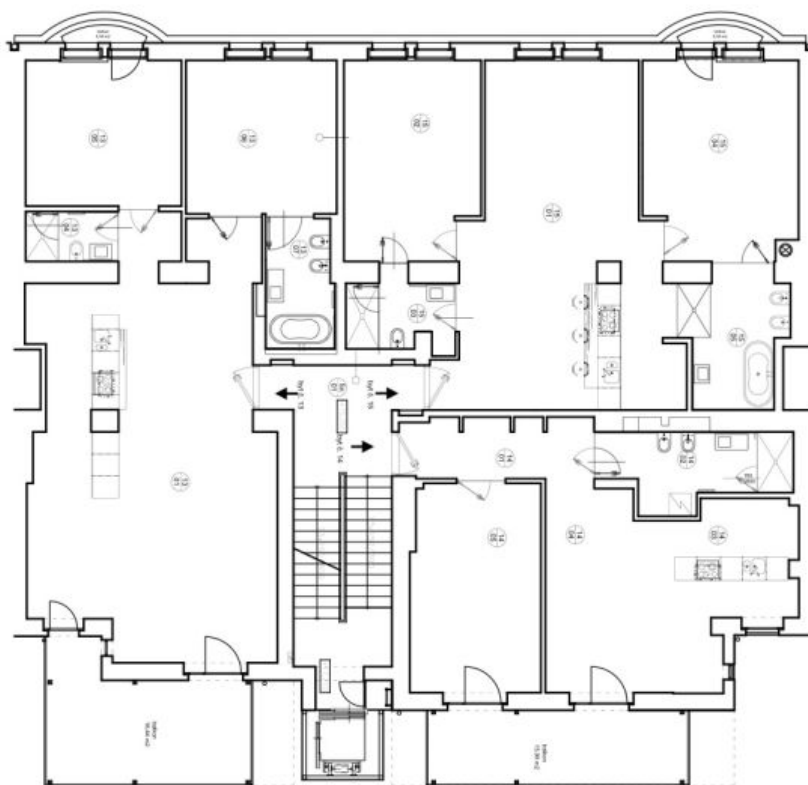
* Area of the unit according to the Civil Code. The area consists of the sum total area of the entire unit bounded by perimeter walls.



Apartment Two-bedroom (3+kk)

116 m², Praha 3, Vinohrady, Laubova

Rented



5.NP

BRT 6.13		
QZN	NĚSTVOST	PODLAHA
V301	obývací pokoj + kuchyně	70,85
V302	spalovna I.	3,40
V303	spalovna II.	17,55
V304	spalovna III.	17,46
V305	spalovna III.	6,43
BRT 6.13 celkem		115,69

BRT 6.14		
QZN	NĚSTVOST	PODLAHA
V401	obývací pokoj	4,96
V402	kuchyně	9,32
V403	kuchyně + jídelna	16,86
V404	obývací pokoj	14,37
V405	spalovna	20,27
BRT 6.14 celkem		72,82

BRT 6.15		
QZN	NĚSTVOST	PODLAHA
V501	obývací pokoj + kuchyně	49,85
V502	spalovna I.	20,24
V503	spalovna I.	5,75
V504	spalovna II.	22,83
V505	spalovna III.	10,15
BRT 6.15 celkem		108,82

SVOČI		
skupina	rozloha	stavba
204	151	stavba