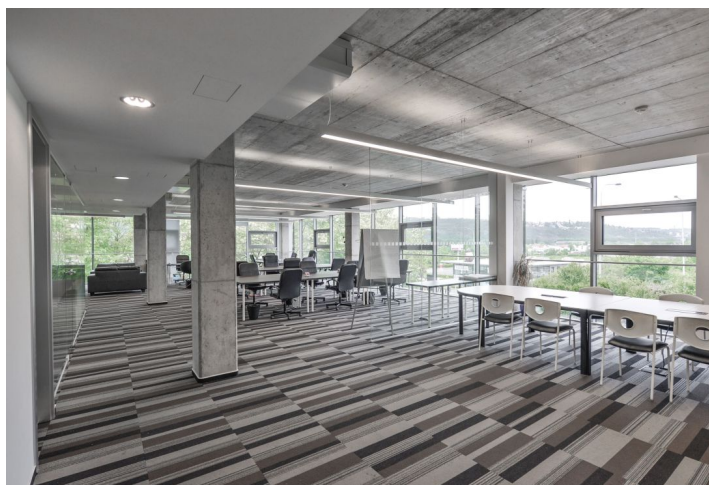
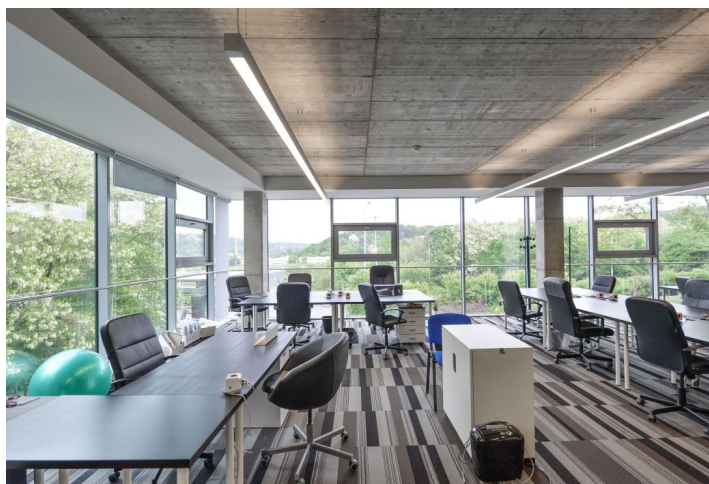




Office building

Praha 4, Modřany, Československého exilu

Rented



**Office building**

Praha 4, Modřany, Československého exilu

Rented

| | |
|-------------------------|-----------------------------------|
| Service price | 80 CZK monthly per m ² |
| Total building area | 1 800 m ² |
| Tenant consumption | — |
| Parking | 1 850 CZK |
| Parking service charges | — |
| Parking ratio | — |
| Certification | — |
| PENB | C |
| Reference number | 14831 |

This newly reconstructed office building, divided into two separate buildings connected by a passage with an outdoor elevator and central stairs is located in Prague 4.

Location:

The building is located in a quiet area of Prague 4 along the right bank of the Vltava River. Very good transport possibility - bus and tram stops are just a 5-minute walk away; the nearest metro station is Kačerov (line C).

Facilities and services:

The building offers flexible office space on the upper floors of the building, complete with a terrace. Fully air-conditioned, with a kitchenette and toilet. Possibility to rent 1 – 3 parking spaces.

Rental and service charges listed without VAT. Lessee pays no commission.



Office building

Praha 4, Modřany, Československého exilu

Rented

