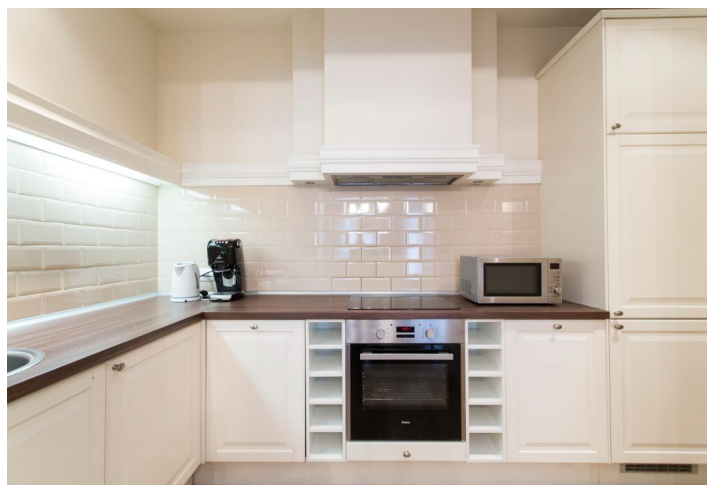




## Apartment Two-bedroom (3+kk)

Rented

82 m<sup>2</sup>, Prague 2, Nové Město, Lípová





## Apartment Two-bedroom (3+kk)

Rented

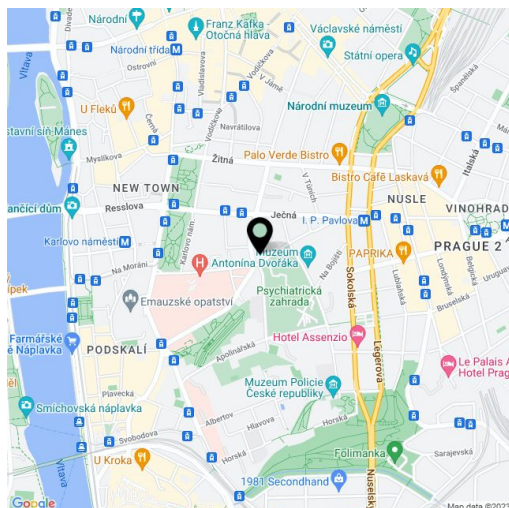
82 m<sup>2</sup>, Prague 2, Nové Město, Lípová

Total area	86 m <sup>2</sup>
Floor area*	82 m <sup>2</sup>
Balcony	4 m <sup>2</sup>
Parking	-
Cellar	-
PENB	G
Reference number	14888
Available from	Immediately

Centrally located, fully reconstructed and fully furnished 2-bedroom flat with a balcony, on the third floor of a fully refurbished traditional building with preserved original details, without a lift. Located in a quiet street within walking distance of Karlovo náměstí and I.P.Pavlova metro stations (lines B and C), with full amenities in the area and very quick access to the city center.

The interior features two bedrooms - one with a balcony facing the courtyard, a living room with a fully fitted open kitchen and dining space, bathroom with a walk-in shower and two sinks, a separate toilet, utility room, and entrance hall.

Custom made furnishings, wooden floating floors, tiles, large windows, gas boiler, dishwasher, microwave oven, kitchenware, TV. Common building charges, utilities, UPC, WiFi and a weekly cleaning CZK 5000 per month. Additional services can be arranged at an extra fee (laundry and ironing services). **Mid term rental** available at a higher rent. Available from July 10, 2018.



\* Area of the unit according to the Civil Code. The area consists of the sum total area of the entire unit bounded by perimeter walls.