



House Nine-bedroom (10+1)

Ask for price

1 009 m², Prague 6, Bubeneč, Na Zátorce





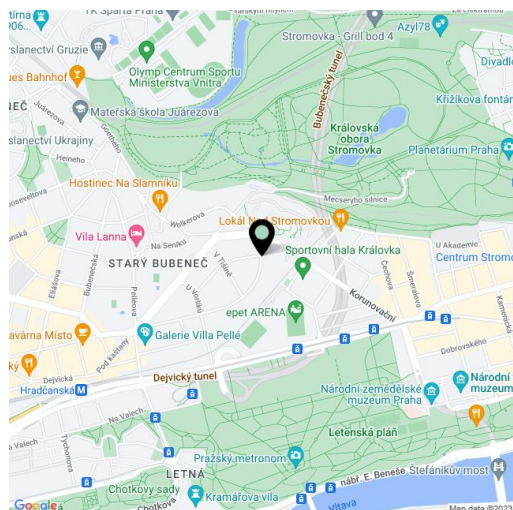
House Nine-bedroom (10+1)

Ask for price

1 009 m², Prague 6, Bubeneč, Na Zátorce

Usable area	1 009 m ²
Plot	2 529 m ²
Foot print	513 m ²
Garden	2 016 m ²
Floor area	814 m ²
Terrace	195 m ²
Parking	Yes
Garage	Yes
Cellar	Yes
PENB	G
Reference number	14941

Unique 1930's villa situated in one of the most prestigious residential localities. The exceptional family house was built for Mr. Kapsa (a co-owner of a famous construction company) by architect Otakar Novotný, interior was designed by Adolf Loos. Famous architecture of First Czechoslovak Republic: spacious and bright rooms, sensitive combination of natural materials (wood, stone, glass). The object offers very private atmosphere and large maintained garden. Basement 230,4 m², ground floor 227 m², 1st floor 220 m², attic 139,1 m² - Usable area 814,8 m², terraces/balconies 195 m², garden 2016 m², footprint 513 m².

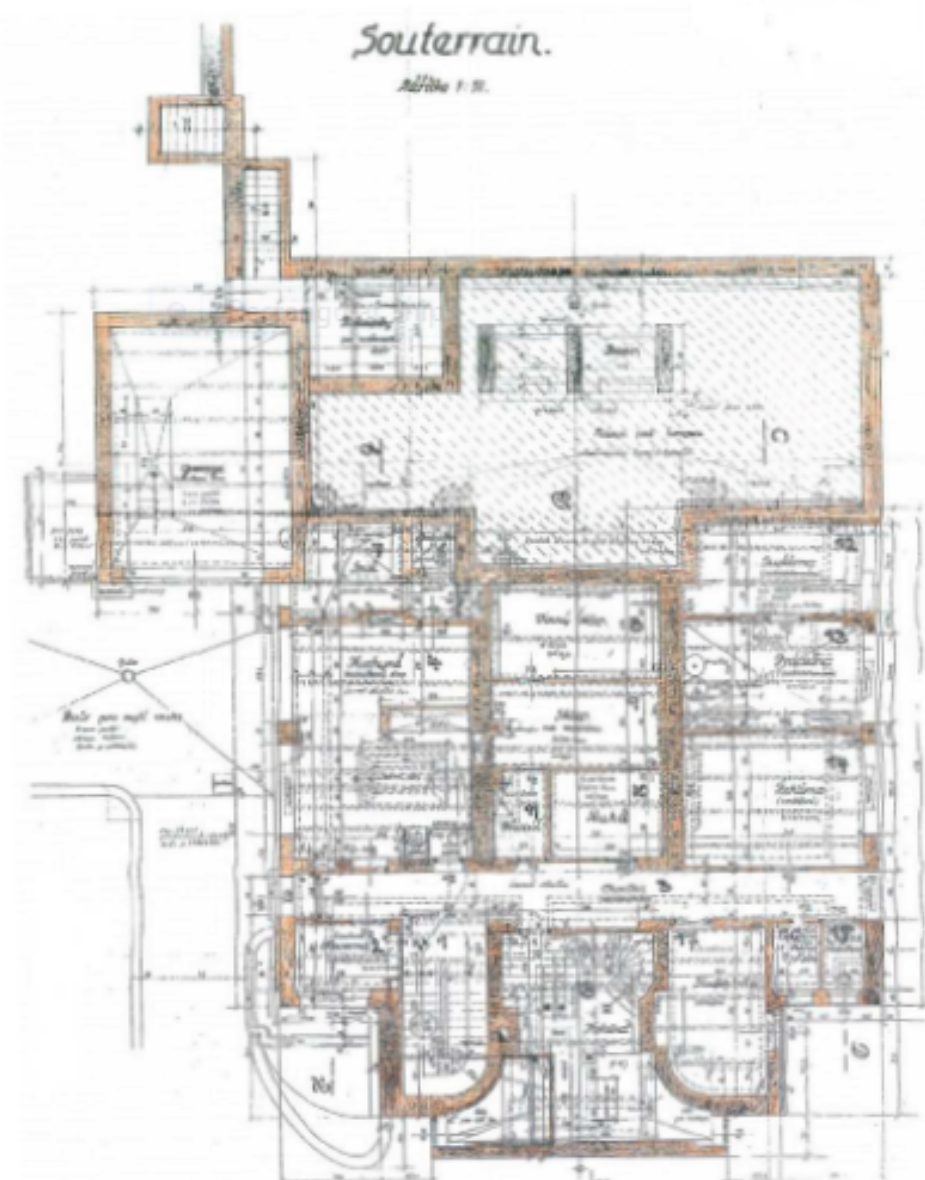




House Nine-bedroom (10+1)

1 009 m², Prague 6, Bubeneč, Na Zátorce

Ask for price

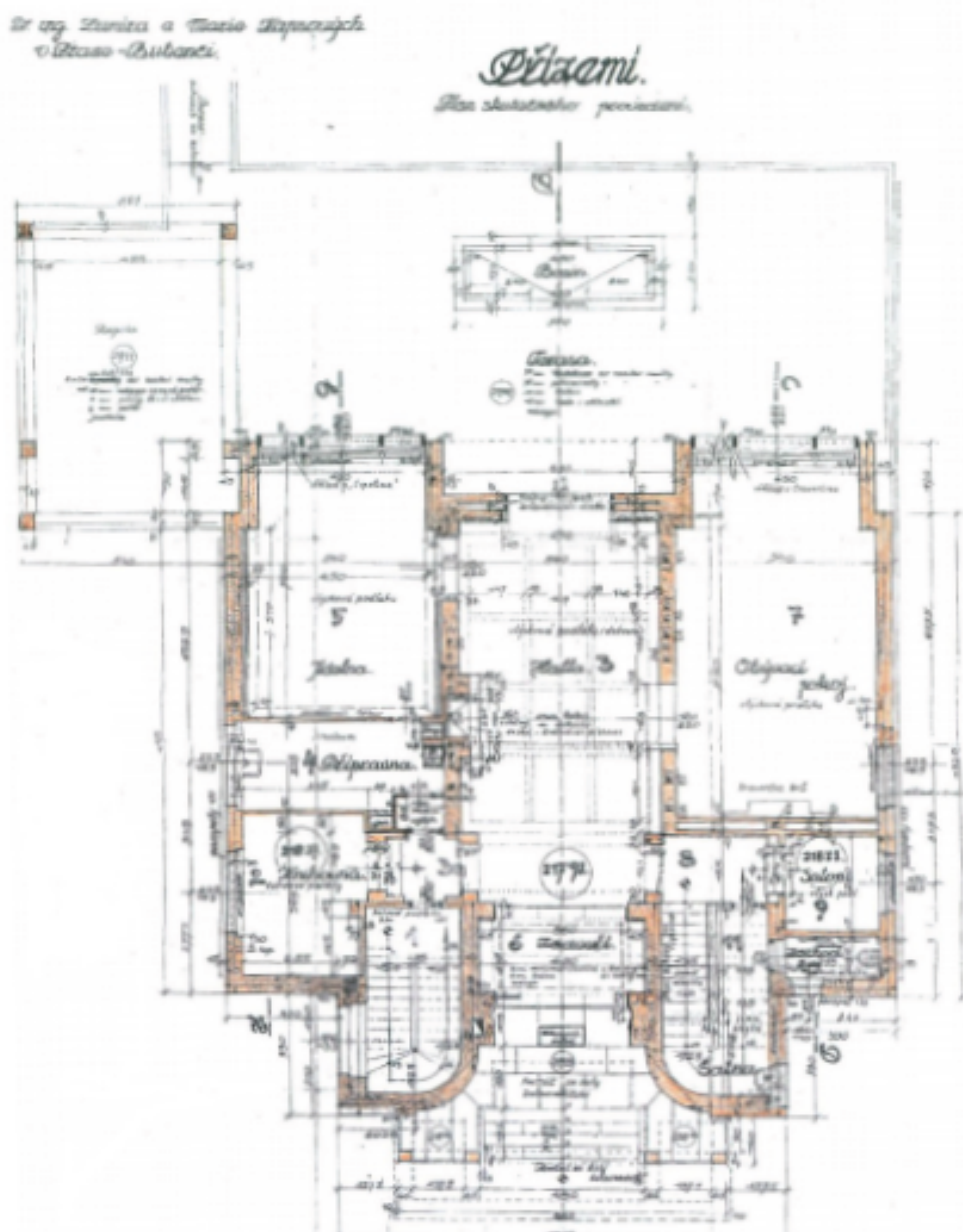




House Nine-bedroom (10+1)

Ask for price

1 009 m², Prague 6, Bubeneč, Na Zátorce

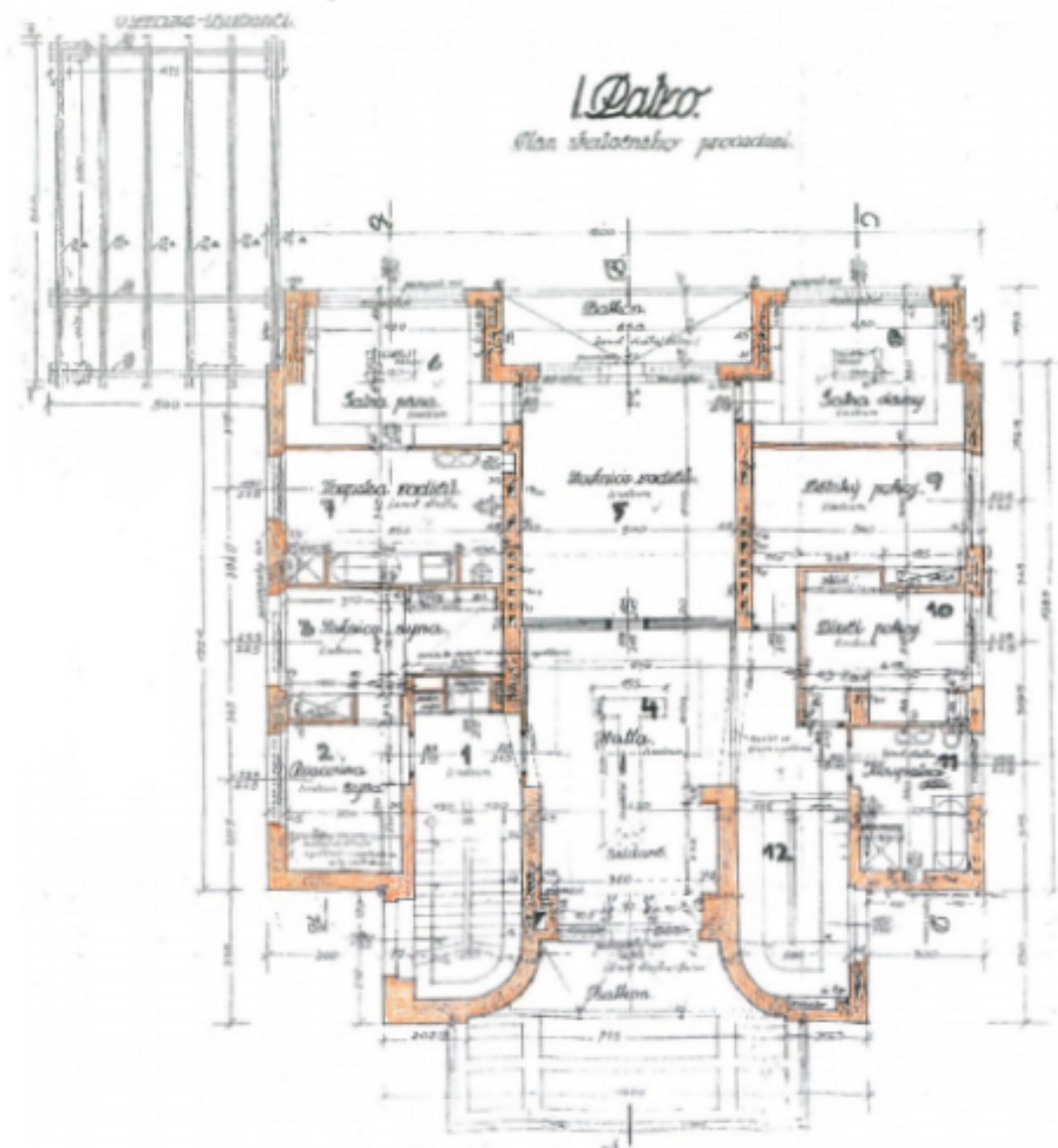




House Nine-bedroom (10+1)

Ask for price

1 009 m², Prague 6, Bubeneč, Na Zátorce





House Nine-bedroom (10+1)

Ask for price

1 009 m², Prague 6, Bubeneč, Na Zátorce

