



Office space

Prague 4, Michle, Želetavská

Rented



**Office space****Rented**

Prague 4, Michle, Želetavská

Service price	165 CZK monthly per m ²
Available area	434 m ²
Cellar	-
Parking	EUR 115 / pp / month
PENB	G
Reference number	14959

Office space for lease on the ground floor of the project, which consists of two interconnected office buildings for rent, within the largest administrative complex in Prague 4. There is a representative central reception, 4 high-speed elevators and 245 parking spaces.

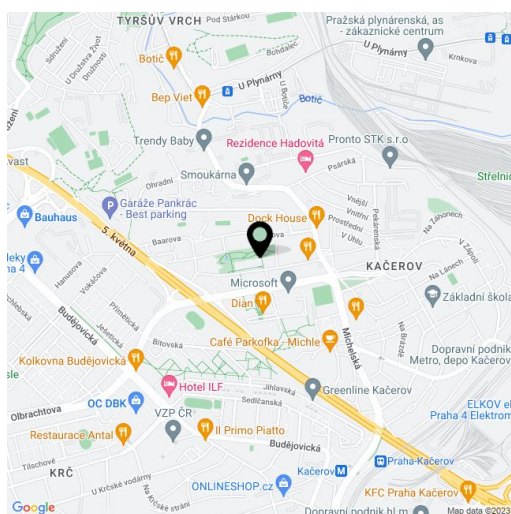
Location:

Good accessibility by public transport – in the vicinity of the Budějovická metro station (line C) and bus stops. Strategically situated near the D1 highway and the Prague Ring Road.

Features and services:

- Elegant central reception area
- 24-hour security service, CCTV
- 4 high-speed elevators
- Fire protection system
- Card access system
- Flexible office space layout
- Ample number of telephone and ISDN lines, possibility to connect to a fibre-optic cable network
- Suspended ceilings
- High quality carpeting
- Air conditioning provided by a four-tube fan coil unit
- Exterior blinds
- 245 indoor parking spaces

Prices are listed without VAT. Lessee pays no commission.

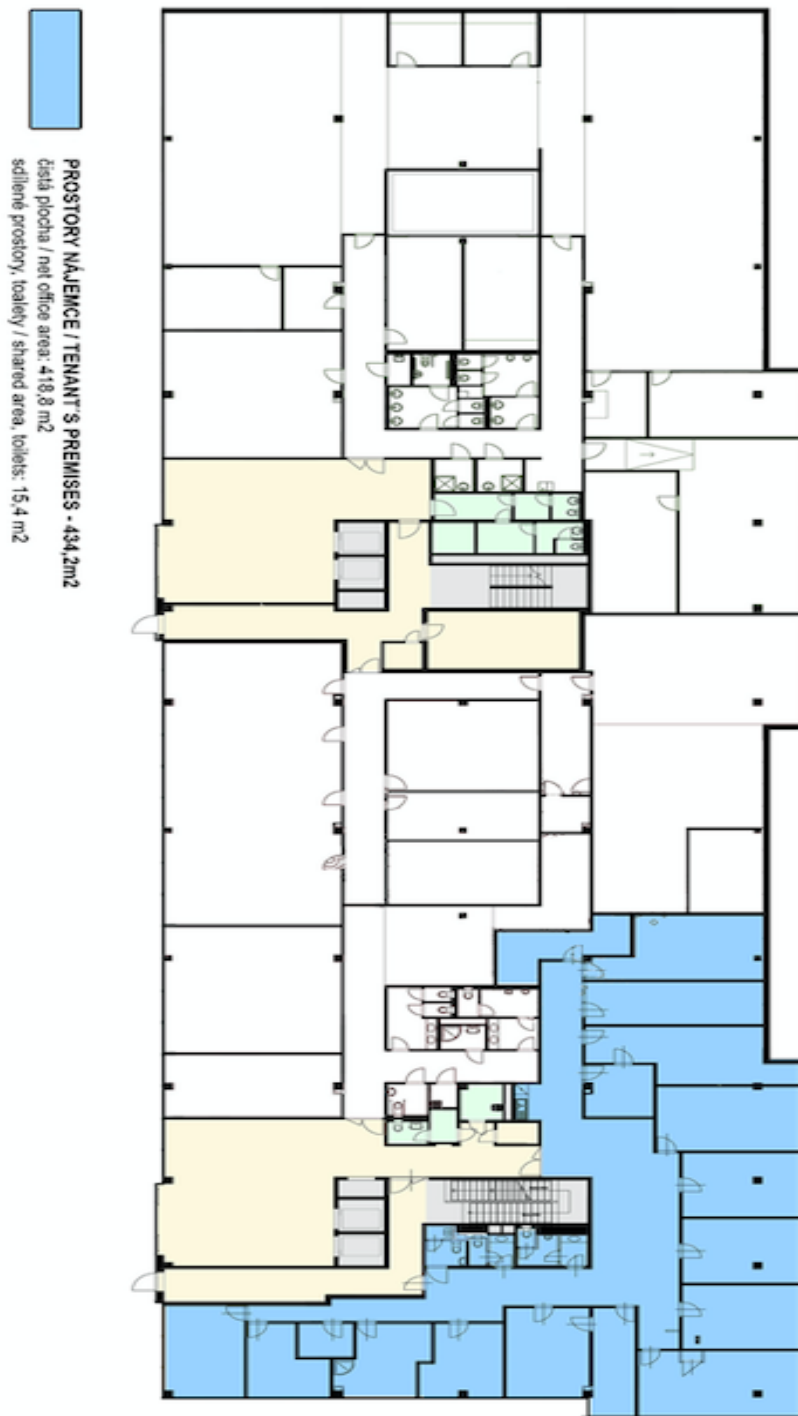




Office space

Prague 4, Michle, Želetavská

Rented



1.NP