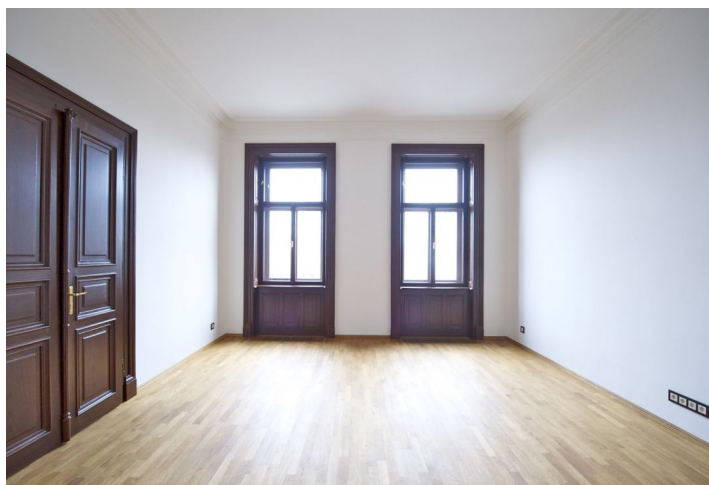




Apartment Two-bedroom (3+1)

133 m², Prague 1, Malá Strana, Malostranské nábřeží

Rented





Apartment Two-bedroom (3+1)

Rented

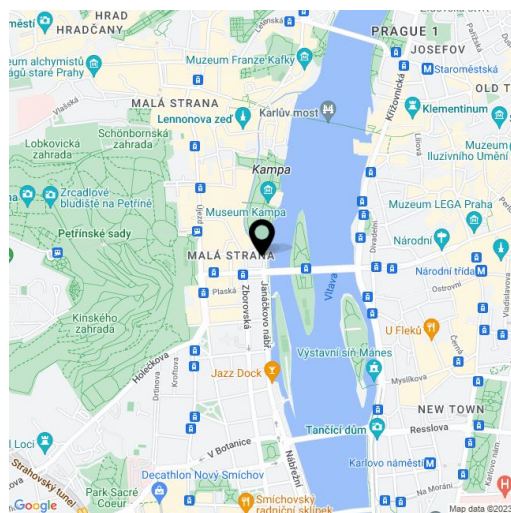
133 m², Prague 1, Malá Strana, Malostranské nábřeží

Total area	140 m ²
Floor area*	133 m ²
Balcony	7 m ²
Parking	-
Cellar	-
PENB	G
Reference number	14970
Available from	Immediately

Boasting most wonderful location right on the Vltava riverbank on the edge of the Kampa Island, this nicely renovated 2-bedroom flat with a balcony provides beautiful views of the Vltava river, the National Theater and Charles Bridge. Situated on the 3rd floor of an 1890 Neo Renaissance building with preserved original features, 24-hour reception with camera system, cafe, restaurant, and a green courtyard with seating and a shower.

The interior includes living room with balcony access, fully fitted kitchen and dining area, two bedrooms, walk-in closet, full bathroom, guest toilet, and entry hall.

High ceilings, parquet floors, stucco ornaments, working historic Dutch stove, Miele appliances, heating and cooling system, heated floor in the bathroom, gas boiler, video entry phone, lift. Concierge service available for an extra charge. Common building charges 1100/person/month, deposit for water and cooling CZK 3000/month. Gas and electricity will be transferred to the tenant's name.



* Area of the unit according to the Civil Code. The area consists of the sum total area of the entire unit bounded by perimeter walls.



Apartment Two-bedroom (3+1)

Rented

133 m², Prague 1, Malá Strana, Malostranské nábřeží

