



Office building

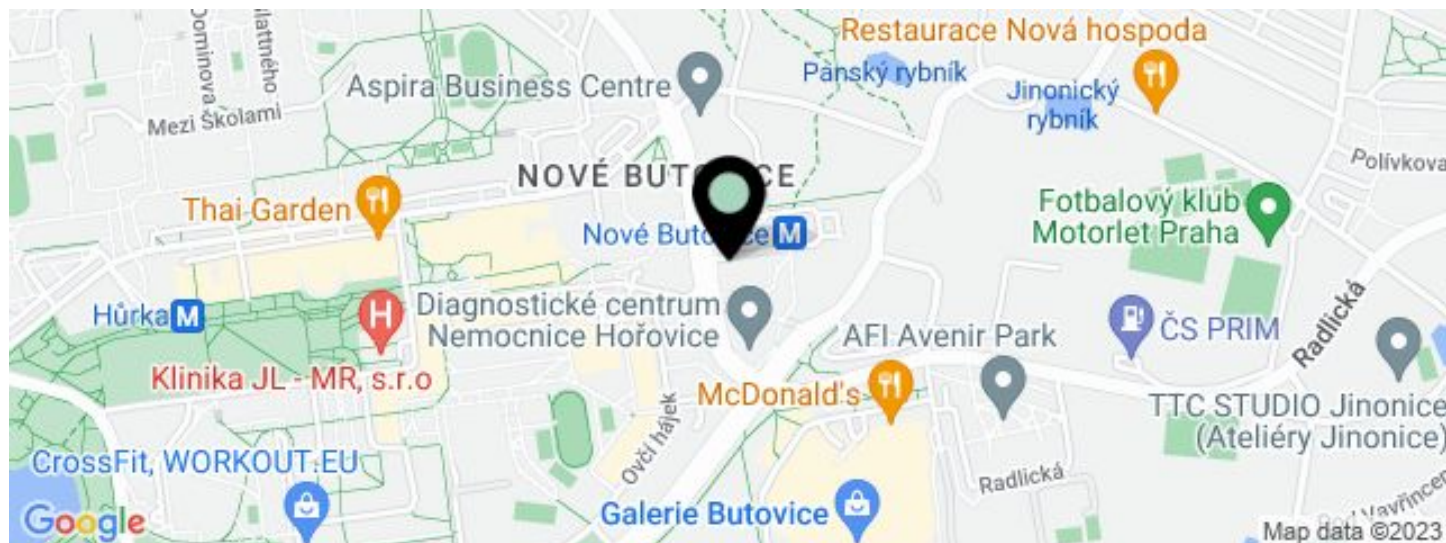
5 072 m², Prague 5, Stodůlky, Bucharova

€ 15.50 / m² | CZK 390 / m²





Office building

€ 15.50 / m² | CZK 390 / m²5 072 m², Prague 5, Stodůlky, Bucharova

UNIT	AVAILABLE AREA	SERVICES	PARKING	MONTHLY RENT
Building D, Office space, 16th floor	621 m ²	140 CZK monthly per m ²	EUR 100 / ps / month	€ 15.50 / m ²
Building D, Office space, 14th floor	621 m ²	140 CZK monthly per m ²	EUR 100 / ps / month	€ 15.50 / m ²
Building D, Office space, 5th floor	621 m ²	140 CZK monthly per m ²	EUR 100 / pp / month	€ 15.50 / m ²
Building C, Office space, 2nd floor	924 m ²	140 CZK monthly per m ²	EUR 100 / ps / month	€ 15.50 / m ²
Building B, Office space, 8th floor	649 m ²	140 CZK monthly per m ²	EUR 100 / ps / month	€ 15.50 / m ²
Building B, Office space, 1st floor	473 m ²	140 CZK monthly per m ²	EUR 100 / ps / month	€ 15.50 / m ²
Building A, Office space, 3rd floor	1 163 m ²	140 CZK monthly per m ²	EUR 100 / ps / month	€ 15.50 / m ²

**Office building**5 072 m², Prague 5, Stodůlky, Bucharova**€ 15.50 / m² | CZK 390 / m²**

Service price	140 CZK monthly per m ²
Total building area	33 218 m ²
Tenant consumption	—
Parking	100 EUR
Parking service charges	—
Parking ratio	—
Certification	—
PENB	Not required
Reference number	15017

Administrative building with office premises for lease in Prague 5. Flexible office space layout (open plan/cellular offices) offering plenty of daylight and beautiful views. The business park setting is defined by attractive landscaping and greenery. Onsite restaurant and cafe available. The Galerie Nové Butovice shopping center is within walking distance, while the Zličín shopping center is just 5 minutes by car or metro.

Location:

Modern office building in established business location, situated at the metro station Nové Butovice (line B), 10 minute drive from Ruzyně Airport and 20 minutes from city center. Good connectivity to D5 highways and Prague ring-road.

Features and Services:

Reduced ceilings with LED lights
 Heating and cooling provided by a four-pipe fan coil system
 Connection to central air-conditioning with sufficient capacity
 Openable windows
 Sophisticated cable system
 Raised floors (building C only)
 Plenty of ISDN phone lines including fiber optic cable connections
 Newly reconstructed representative reception halls and an elevator lobby
 24-hour surveillance and CCTV camera system
 Property management available in the building
 Access to magnetic cards
 Greenery with relaxation zones around buildings
 Underground car parking including places for visitors
 Car washes and charging stations for electromobiles
 Showers for cyclists
 Shopping centers nearby
 Mobile App: news, daily menu, reservation of services and parking spaces, fault reporting, information on visits and access to the building without a card

Rental and service charges listed without VAT. Lessee pays no commission.

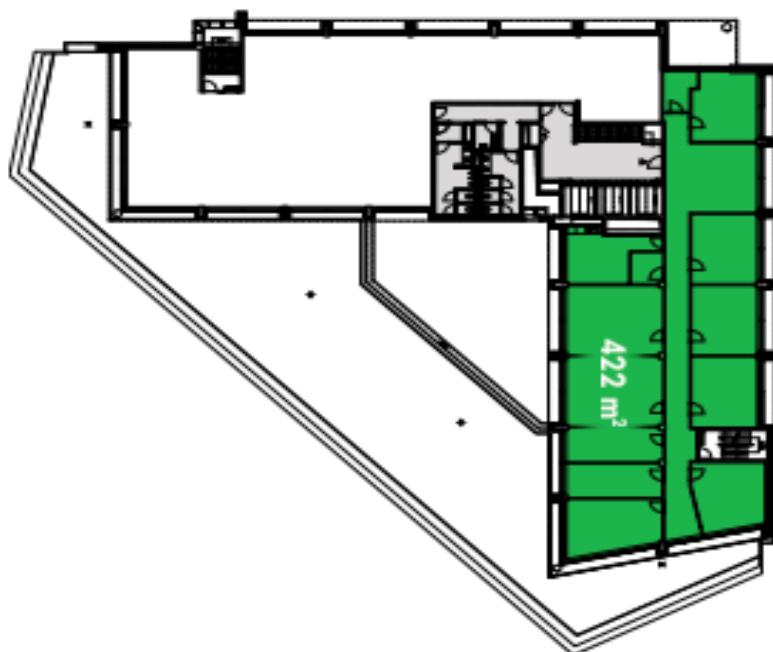


Office building

5 072 m², Prague 5, Stodůlky, Bucharova

€ 15.50 / m² | CZK 390 / m²

1. patro
1st floor





Office building

5 072 m², Prague 5, Stodůlky, Bucharova

€ 15.50 / m² | CZK 390 / m²

15. patro
15th floor

