



Apartment Four-bedroom (5+kk)

Rented

181 m², Prague 3, Vinohrady, Laubova





Apartment Four-bedroom (5+kk)

Rented

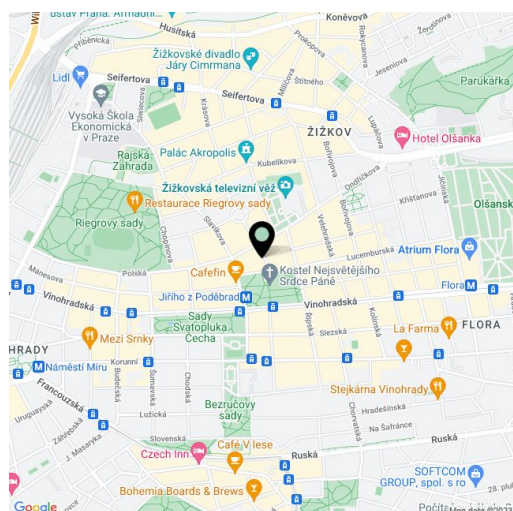
181 m², Prague 3, Vinohrady, Laubova

Total area	196 m ²
Floor area*	181 m ²
Balcony	15 m ²
Parking	Garage parking.
Garage	Yes
Cellar	Yes
Service price	Deposit for building charges and utilities CZK 12,000/month.
PENB	G
Reference number	15037
Available from	Immediately

This high-quality designer apartment with two balconies (15 + 1 sq. m.) facing a quiet courtyard is on the fourth floor of a fully refurbished classic building with an elevator. Conveniently located in a quiet part of a popular residential part of Vinohrady with full amenities, just steps from the Jiřího z Poděbrad metro station, a short walk to Riegrovy Sady Park.

With quality materials and finishes, the interior features a living room with a fully fitted open plan kitchen, four bedrooms all with built-in wardrobes, a full master bathroom, two shower bathrooms with a toilet, and an entry hall.

Tall clean lines, wooden floors, heated tiles in the bathrooms, French windows, plenty of built-in storage, security door, recessed lighting, central switch, washer, dryer, satellite and Internet connection, alarm that can be connected to a security agency, video entry phone. Designed by the renowned Donlic studio. Garage parking available for CZK 5,000/month.



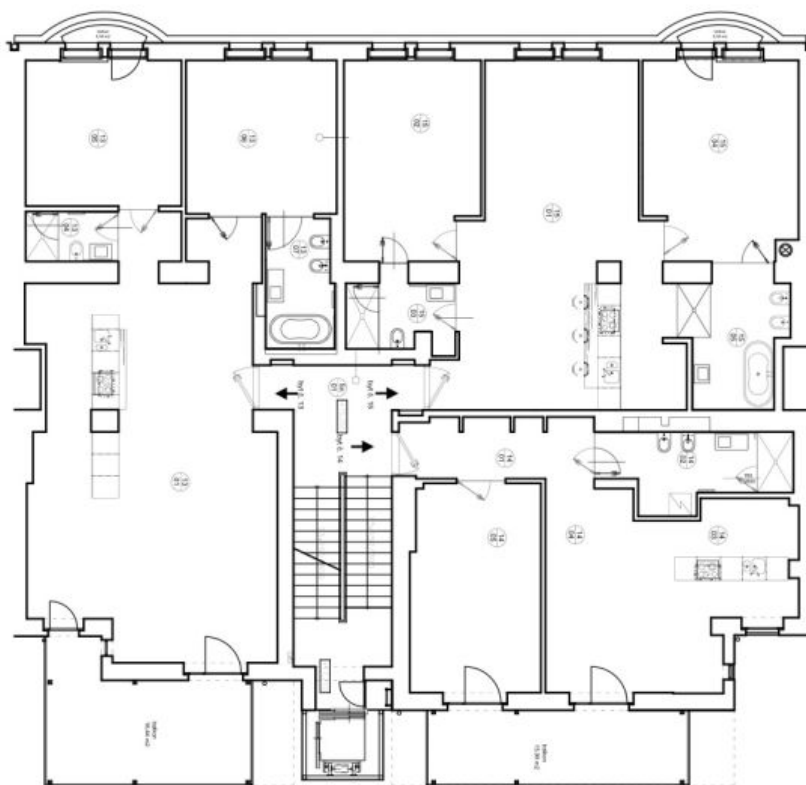
* Area of the unit according to the Civil Code. The area consists of the sum total area of the entire unit bounded by perimeter walls.



Apartment Four-bedroom (5+kk)

181 m², Prague 3, Vinohrady, Laubova

Rented



5.NP

BRT 6.13		
ZÓN	NESTVOST	PODLAHA
V101	obývací pokoj + kuchyň	70,85
V102	spalovna I.	3,40
V103	spalovna II.	17,55
V104	spalovna III.	17,86
V105	spalovna IV.	6,43
BRT 6.13 celkem		116,09

BRT 6.14		
ZÓN	NESTVOST	PODLAHA
V401	obývací pokoj	8,96
V402	kuchyně	9,32
V403	obývací pokoj + jídelna	18,86
V404	obývací pokoj	14,37
V405	obývací pokoj	20,27
BRT 6.14 celkem		72,82

BRT 6.15		
ZÓN	NESTVOST	PODLAHA
V501	obývací pokoj + kuchyň	49,85
V502	obývací pokoj I.	20,34
V503	obývací pokoj II.	5,75
V504	obývací pokoj III.	22,83
V505	obývací pokoj IV.	10,15
BRT 6.15 celkem		109,02

SVOČI		
skupina	rozloha	umístění
1	20,15	terasa