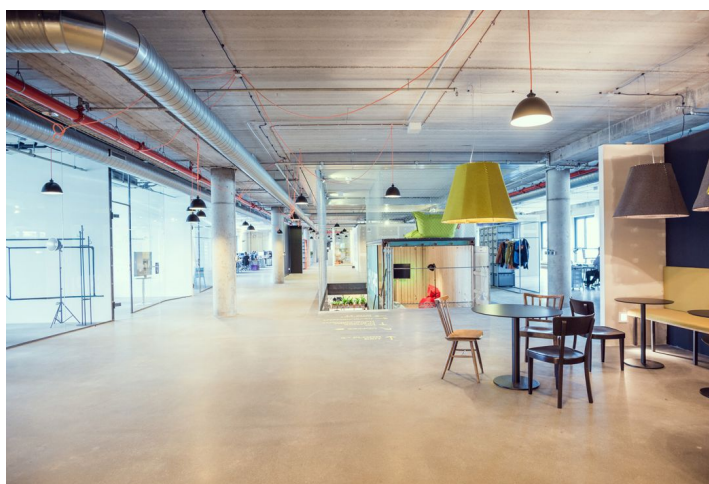
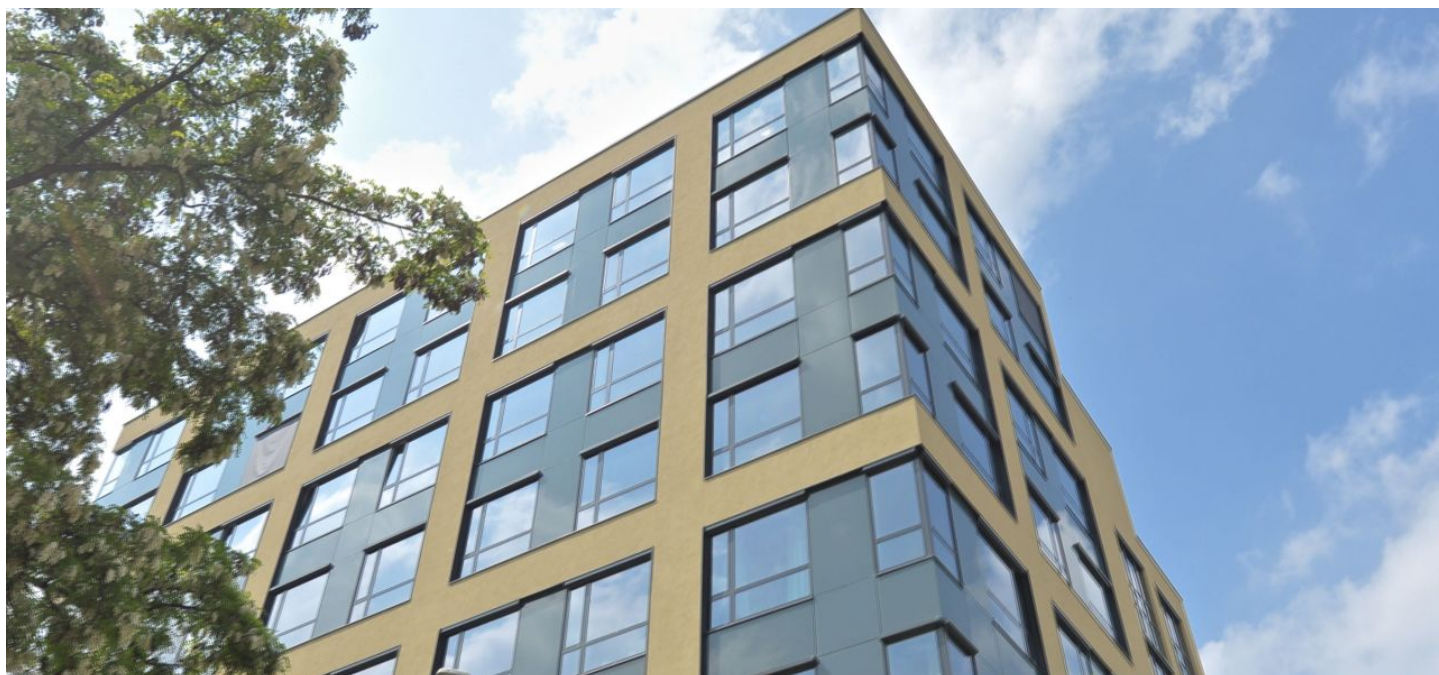




## Office building

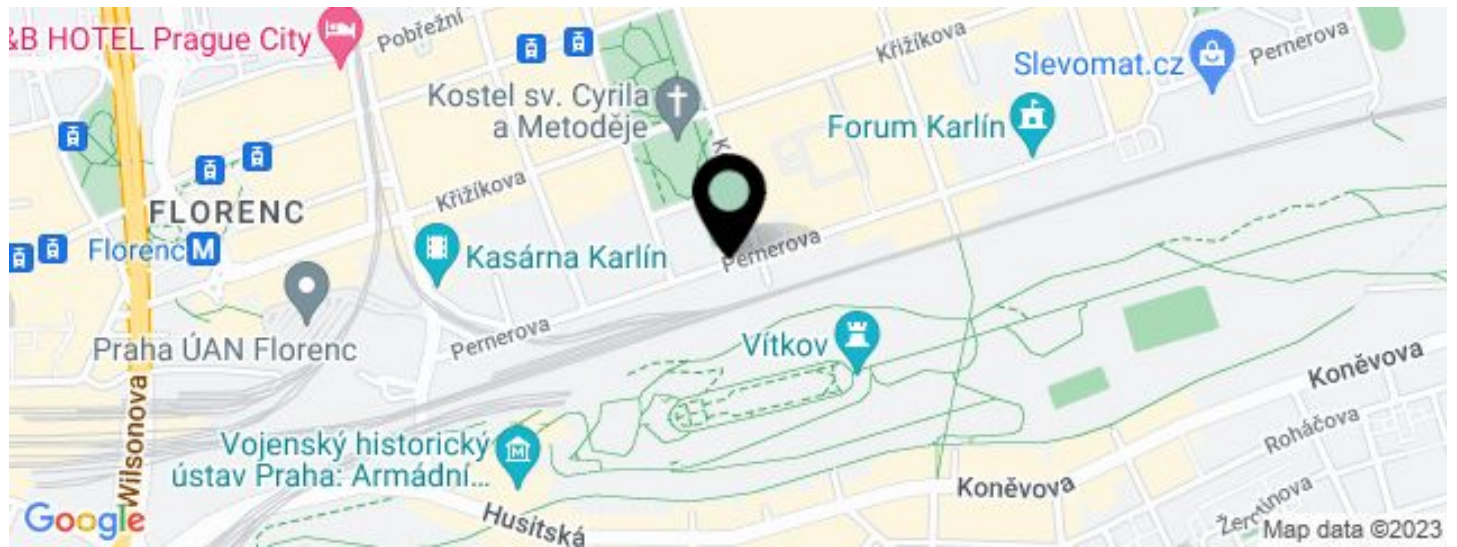
1564 m<sup>2</sup>, Prague 8, Karlín, Pernerova

€ 20.93 / m<sup>2</sup> | CZK 525 / m<sup>2</sup>





## Office building

€ 20.93 / m<sup>2</sup> | CZK 525 / m<sup>2</sup>1564 m<sup>2</sup>, Prague 8, Karlín, Pernerova

UNIT	AVAILABLE AREA	SERVICES	PARKING	MONTHLY RENT
Office space, 6th floor + terrace	1564 m <sup>2</sup>	125 CZK monthly per m <sup>2</sup>	CZK 3 300 / pp / month	€ 20.93 / m <sup>2</sup>



**Office building**1 564 m<sup>2</sup>, Prague 8, Karlín, Pernerova**€ 20.93 / m<sup>2</sup> | CZK 525 / m<sup>2</sup>**

Service price	125 CZK monthly per m <sup>2</sup>
Total building area	10 025 m <sup>2</sup>
Tenant consumption	—
Parking	3 300 CZK
Parking service charges	—
Parking ratio	—
Certification	—
PENB	Not required
Reference number	15066

**Modern 8-story administrative building, designed by world-renowned architect Ricardo Bofill, situated in a popular part of Prague 8 – Karlín.**

**Location:**

The Forum Karlín administrative & social complex is strategically situated in the unique location of the newly emerging business district of Karlín, by the Křížíkova metro station (line B), within walking distance of the city center. A great location providing everything you might need – an abundance of services and ways of spending leisure time, in a tranquil yet bustling atmosphere. The complex is connected to the inner circle of Prague and other key communication centers.

**Facilities and Services:**

The building boasts six floors of state-of-the-art offices. Three floors include terraces, while the top floors provide spectacular views of the surroundings. The office space is equipped with cutting-edge technologies reflecting the latest trends in working methods, interpersonal communication and the use of related services.

Rental and service charges listed without VAT. Lessee pays no commission.