



## House Three-bedroom (4+kk)

137 m<sup>2</sup>, Prague 10, Benice, Žitavská

**Sold**







## House Three-bedroom (4+kk)

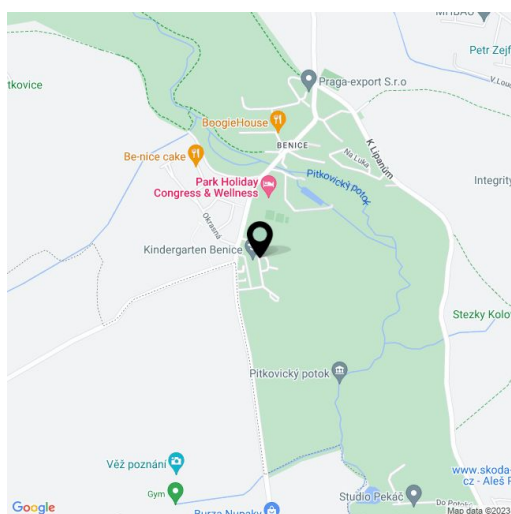
**Sold**137 m<sup>2</sup>, Prague 10, Benice, Žitavská

Plot	197 m <sup>2</sup>
Parking	Yes
Garage	Yes
Cellar	-
PENB	G
Reference number	15119

Family semidetached house with a garden and a garage is located in the architecturally unified and impressive residential area at the outskirts of Prague. Good connection to Prague: 15 minutes by car (highway D1), within the reach of shopping area Čestlice and all public amenities in Průhonice.

There is an entrance hall, kitchen, living room with terrace on the ground floor, guest toilet and storage room. The first floor consists of 3 bedrooms, 2 bathrooms. The property is offered completely finished, ready to move within 4 months.

Interior 137 m<sup>2</sup>, plot 197 m<sup>2</sup>. The purchase price includes VAT.

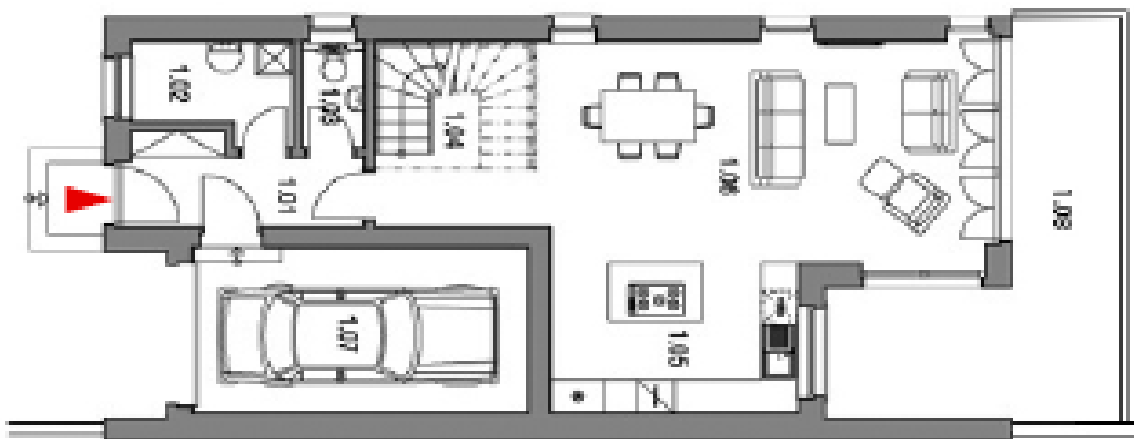




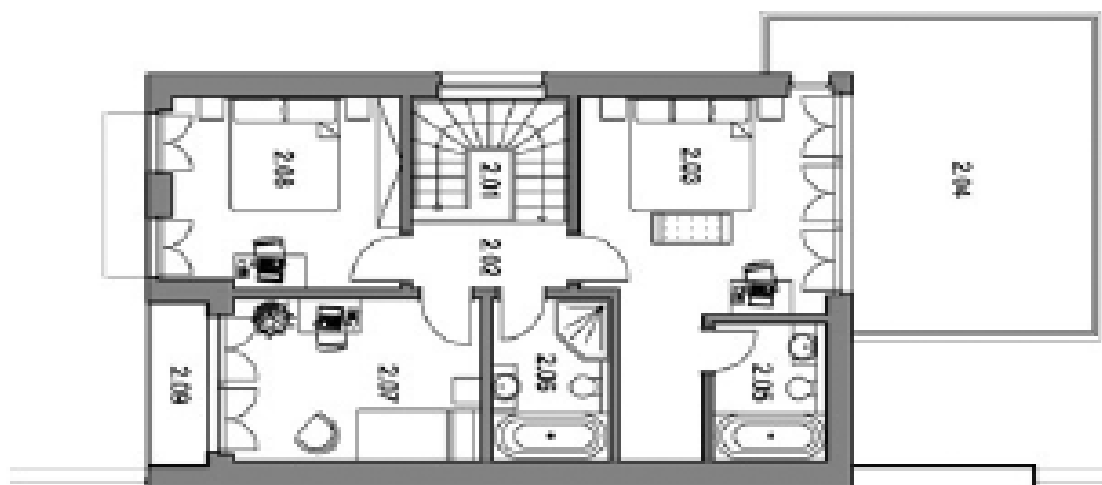
# House Three-bedroom (4+kk)

137 m<sup>2</sup>, Prague 10, Benice, Žitavská

Sold



---





# House Three-bedroom (4+kk)

137 m<sup>2</sup>, Prague 10, Benice, Žitavská

Sold

