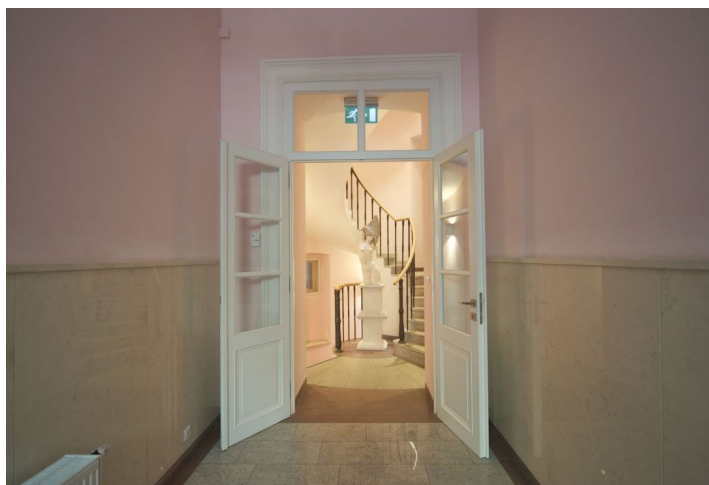




## Apartment One-bedroom (2+kk)

Sold

60 m<sup>2</sup>, Prague 1, Nové Město, Truhlářská





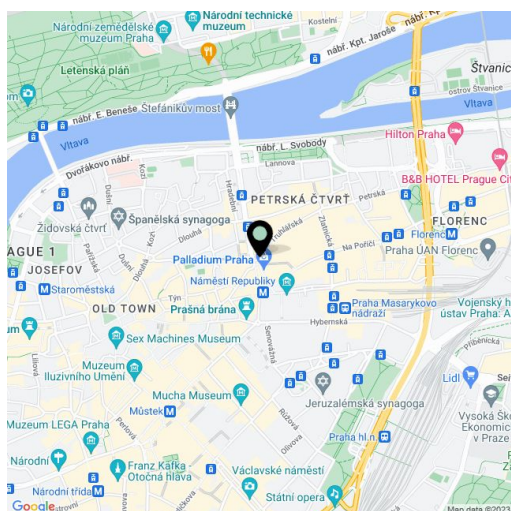
## Apartment One-bedroom (2+kk)

**Sold**60 m<sup>2</sup>, Prague 1, Nové Město, Truhlářská

Total area	60 m <sup>2</sup>
Parking	-
Cellar	-
PENB	G
Reference number	15169

High quality newly reconstructed modern 1-bedroom apartment on the 4th floor of a classic late 19th century building, superbly renovated with attention to detail and retrofitted with a lift. Offering modern living standard, high quality finishings and a lively central location, the apartment is situated in a quiet street just steps from the Náměstí Republiky Square with the Palladium shopping mall, tram stops and metro station. A 10 minute walk to Old Town as well as to Wenceslas Square.

The apartment has an entry hall, living room with a fully fitted open kitchen and floor-to-ceiling windows facing the courtyard, and a bedroom with an en-suite bathroom (bath tub, double sink, toilet with bidet shower). Air-conditioning, top materials, bamboo flooring, heated tiles in the bathroom, central gas heating, alarm that can be connected to a security agency, video entry phone, camera system in the building. Interior 59.79 m<sup>2</sup>.



\* Area of the unit according to the Civil Code. The area consists of the sum total area of the entire unit bounded by perimeter walls.



## Apartment One-bedroom (2+kk)

Sold

60 m<sup>2</sup>, Prague 1, Nové Město, Truhlářská

