



Office building

Prague 5, Stodůlky, Bucharova

Rented

Service price	118 CZK monthly per m ²
Total building area	31 199 m ²
Tenant consumption	—
Parking	130 EUR
Parking service charges	—
Parking ratio	—
Certification	—
PENB	G
Reference number	15184

Office space for lease in a modern office building, which was built in 2015 and represents more than 31,000 sq. m of office space with 533 underground parking spaces. Open space layout with meeting rooms, phone boxes, lounge areas and built-in storage. It also includes a terrace and an original meeting room that won the "Meeting Room of the Year" award in 2017. Possibility to purchase current office furniture.

Location:

Good accessibility by car and public transport - direct access to the Nové Butovice metro station (line B), Václav Havel Airport is about 10 minutes away by car, city centre 20 minutes.

Features and Services:

- Clear office height 3m
- Chilled beams
- Air-ventilation
- Sprinklers
- Smoke detectors
- Electronic fire alarm
- Representative reception
- Openable windows
- Terraces
- Design furniture

Rental and service charges listed without VAT. Lessee pays no commission.



Office building

Prague 5, Stodůlky, Bucharova

Rented



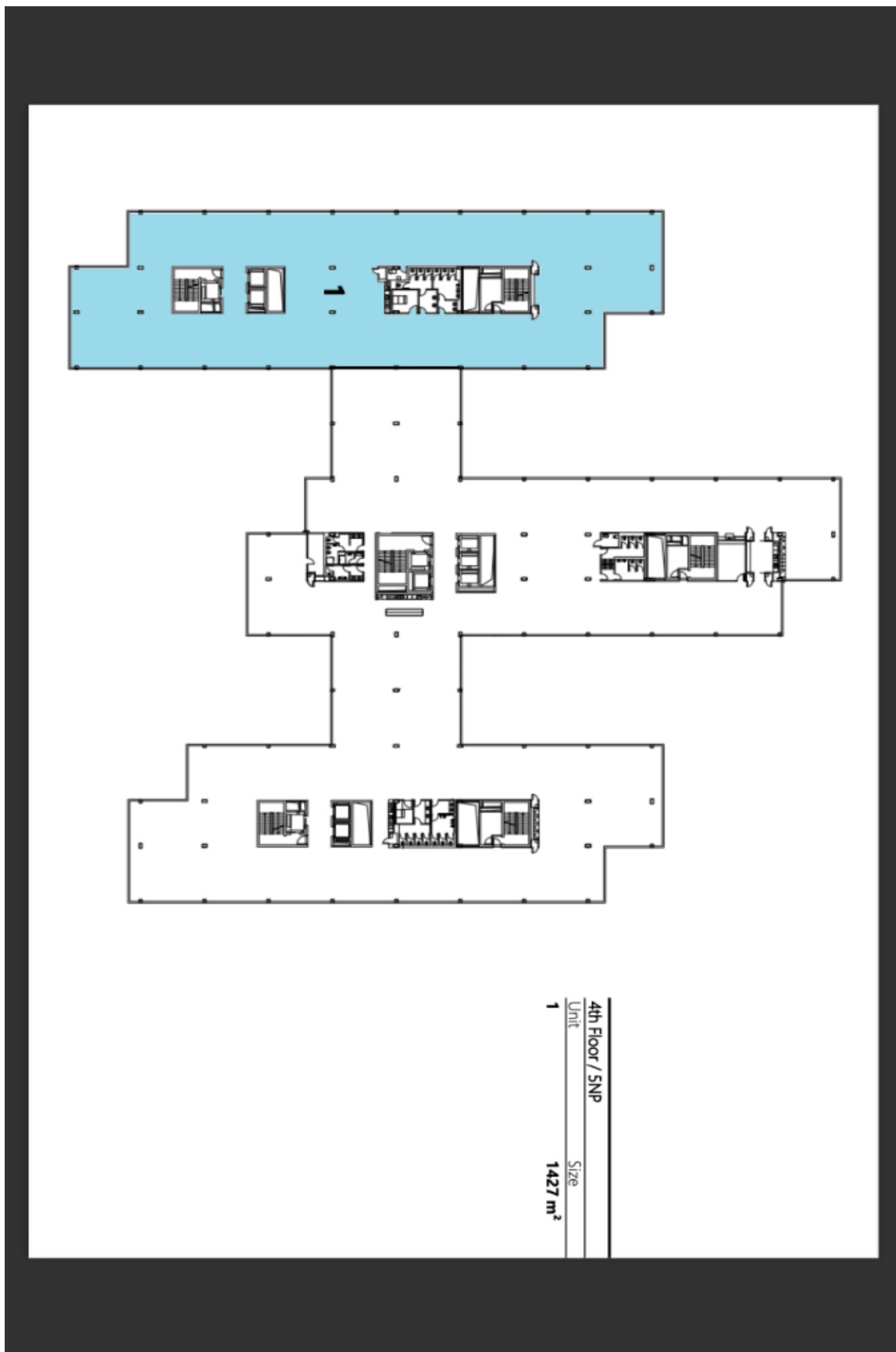
Unit	Size
1	1518 m ²



Office building

Prague 5, Stodůlky, Bucharova

Rented

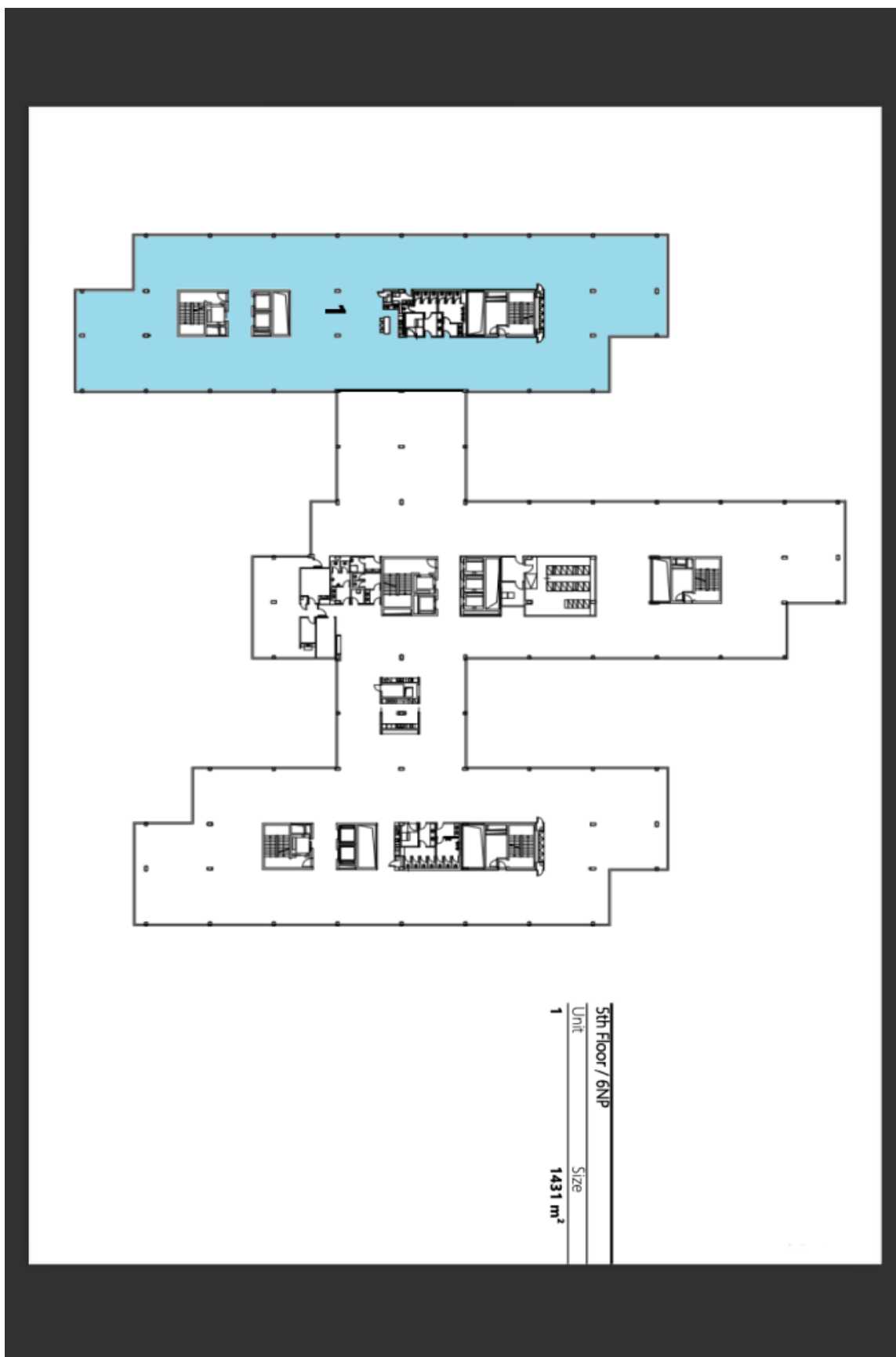




Office building

Prague 5, Stodůlky, Bucharova

Rented





Office building

Prague 5, Stodůlky, Bucharova

Rented

