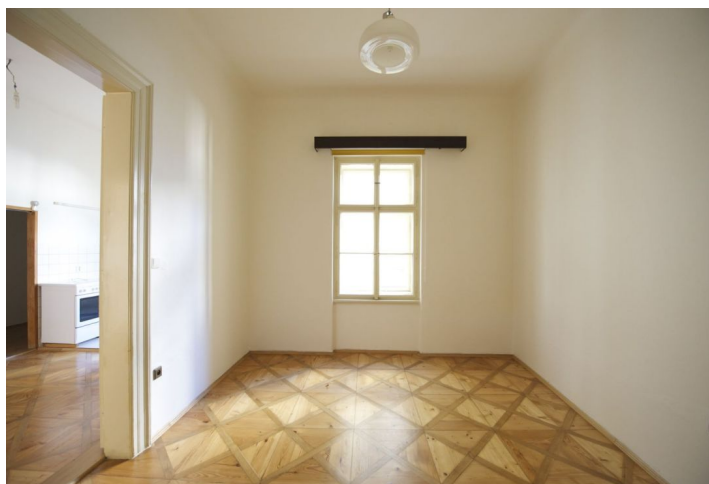




Apartment Two-bedroom (3+kk)

Sold

87 m², Praha 1, Nové Město, Senovážné náměstí



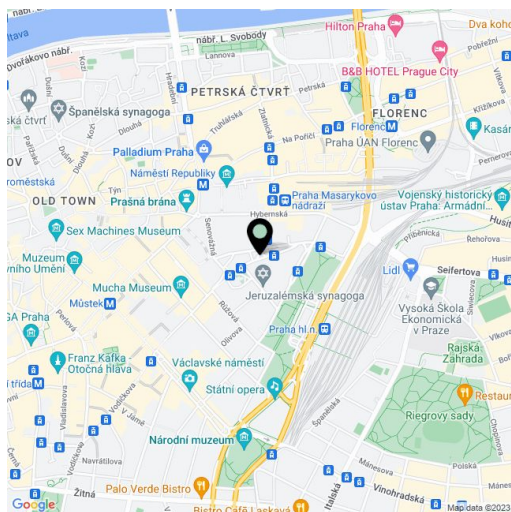


Apartment Two-bedroom (3+kk)

Sold87 m², Praha 1, Nové Město, Senovážné náměstí

Total area	87 m ²
Parking	-
Cellar	-
PENB	G
Reference number	15204

Bright apartment in the center of the New Town with views of Jindřišská věž Tower and the Senovážné náměstí Square suitable for renovation. The apartment offers a large entrance hall with space for built-in wardrobes or walk-in closet, 2 bedrooms, kitchen, bathroom and a separate toilet. Features include original wood floors, double doors, high ceilings. This apartment is situated on the 4th floor of a traditional building with lift, in an area with full amenities, shops, restaurants, and other cultural activities in the immediate vicinity. The interior of 87.7 m².



* Area of the unit according to the Civil Code. The area consists of the sum total area of the entire unit bounded by perimeter walls.



Apartment Two-bedroom (3+kk)

Sold

87 m², Praha 1, Nové Město, Senovážné náměstí

