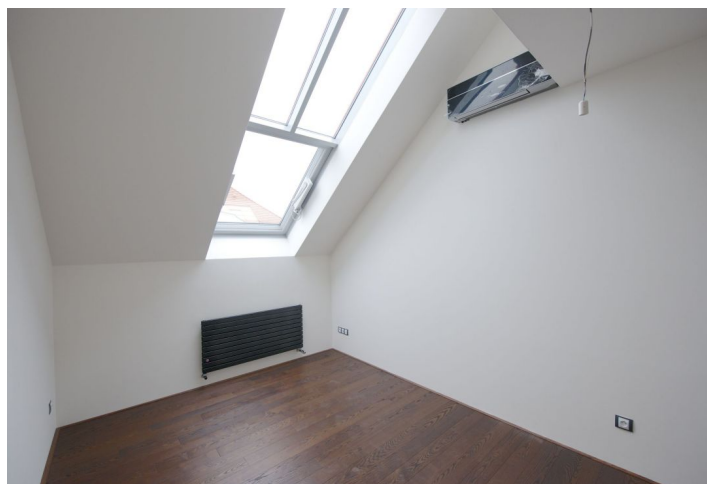




Apartment Two-bedroom (3+kk)

Sold

94 m², Prague 3, Žižkov, Kubelíkova





Apartment Two-bedroom (3+kk)

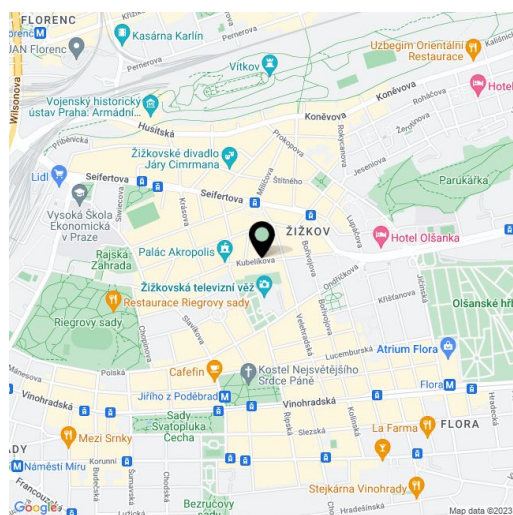
Sold94 m², Prague 3, Žižkov, Kubelíkova

Total area	98 m ²
Floor area*	94 m ²
Loggia	4 m ²
Parking	-
Cellar	-
PENB	G
Reference number	15219

Newly built attic apartment with air-conditioning, situated on the 5th floor of an apartment building located close to the Mahlerovy and Riegerovy sady Parks, just 3 minutes from the Jiřího z Poděbrad metro station.

The apartment offers an entry hall with space for built-in wardrobes, an open-plan living room with kitchen, dining area, 2 bedrooms, walk-in closet, bathroom and a guest toilet. Features include wooden floors, Italian designer doors, high-quality bathroom fixtures and fittings, preparation for kitchen installation, and air-conditioning. Cellar in the basement included in the price.

Interior 98.35 m². Parking available in nearby garages.



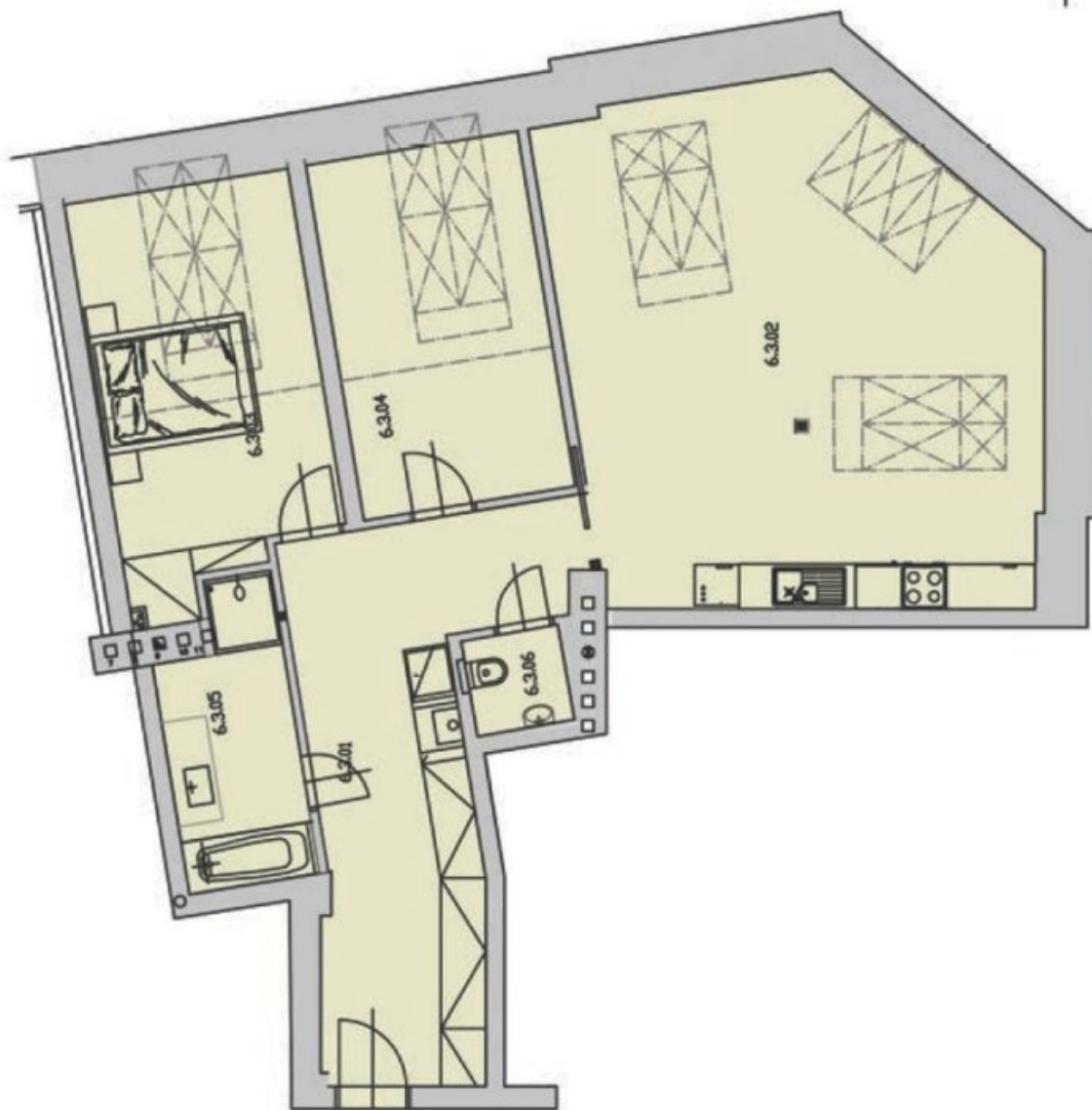
* Area of the unit according to the Civil Code. The area consists of the sum total area of the entire unit bounded by perimeter walls.



Apartment Two-bedroom (3+kk)

94 m², Prague 3, Žižkov, Kubelíkova

Sold



**Apartment Two-bedroom (3+kk)****Sold**94 m², Prague 3, Žižkov, Kubelíkova

6.3.01	PŘEDSÍŇ	18,85	KERAMICKÁ DLAŽBA
6.3.02	OBYTNÁ MÍSTNOST	41,30	PARKETY
6.3.03	LOŽNICE	16,60	PARKETY
6.3.04	LOŽNICE	13,45	PARKETY
6.3.05	KOUPELNA	6,41	KERAMICKÁ DLAŽBA
6.3.06	WC	1,74	KERAMICKÁ DLAŽBA
celkem 98,35 m²			