

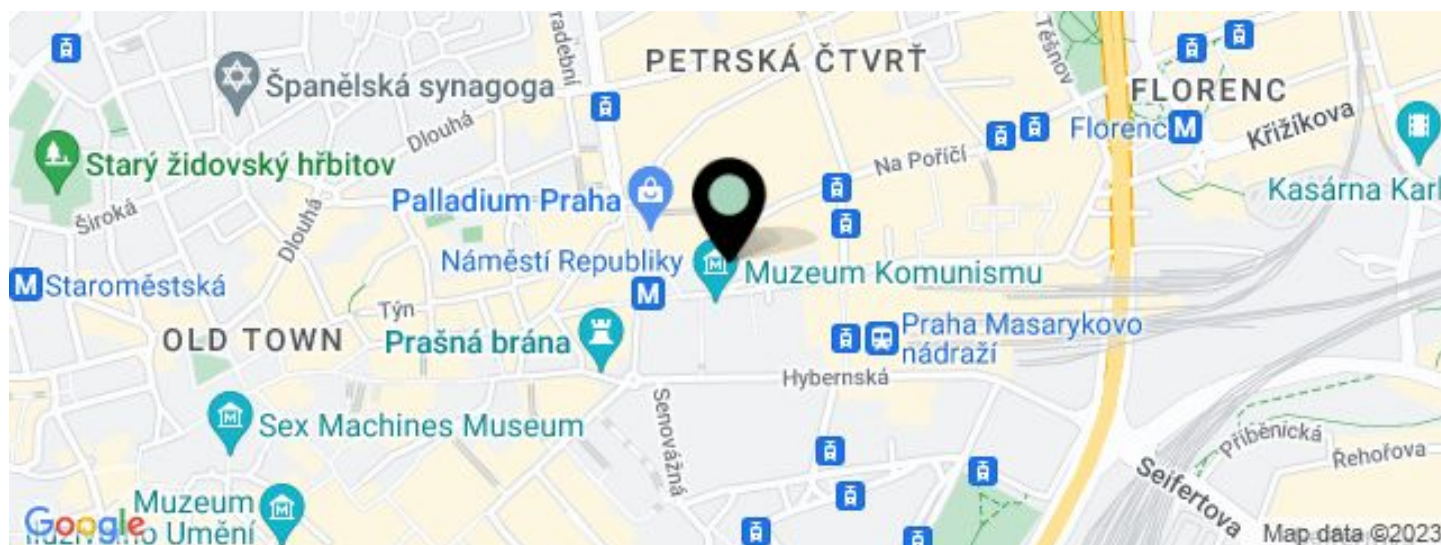


Office building

2 950 m², Prague 1, Staré Město, V Celnici

€ 18.75 / m² | CZK 472 / m²



**Office building****€ 18.75 / m² | CZK 472 / m²**2 950 m², Prague 1, Staré Město, V Celnici

UNIT	AVAILABLE AREA	SERVICES	PARKING	MONTHLY RENT
Office space, 2nd floor	2 150 m ²	155 CZK monthly per m ²	CZK 5 500 / ps / month	€ 18.75 / m ²
Office space, mezzanine	800 m ²	155 CZK monthly per m ²	CZK 5 500 / ps / month	€ 18.75 / m ²



Office building

2 950 m², Prague 1, Staré Město, V Celnici

€ 18.75 / m² | CZK 472 / m²

Service price	155 CZK monthly per m ²
Total building area	12 000 m ²
Tenant consumption	—
Parking	5 500 CZK
Parking service charges	—
Parking ratio	—
Certification	—
PENB	C
Reference number	15248

Administrative building with office space for lease in the center of Prague with excellent access by car and public transport. Building also offers underground parking with more than 400 parking spaces.

Location:

Outstanding accessibility by car and public transportation - close to Náměstí Republiky metro station (line B), important tram hub and Masaryk train station and close to city highway with direct connection to the D1 highway.

Features and Services:

Lowered ceilings with built-in lighting
Double floors
Carpet
Air conditioning
Heating with backup power supply
Kitchenette
Toilets
24/7 security
Representative reception
Chip card access

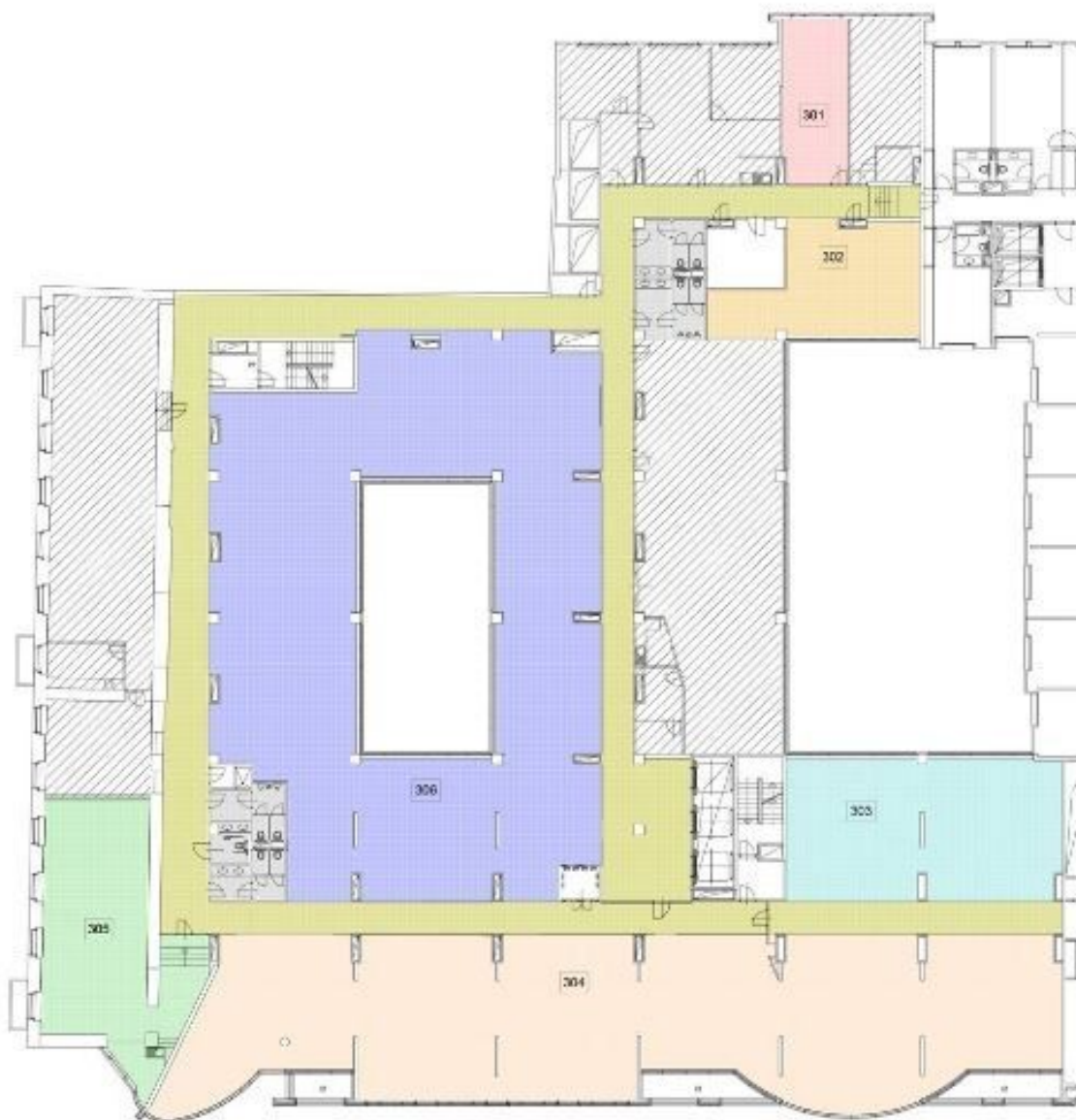
Rental and service charges listed without VAT. Lessee pays no commission.



Office building

2 950 m², Prague 1, Staré Město, V Celnici

€ 18.75 / m² | CZK 472 / m²





Office building

2 950 m², Prague 1, Staré Město, V Celnici

€ 18.75 / m² | CZK 472 / m²

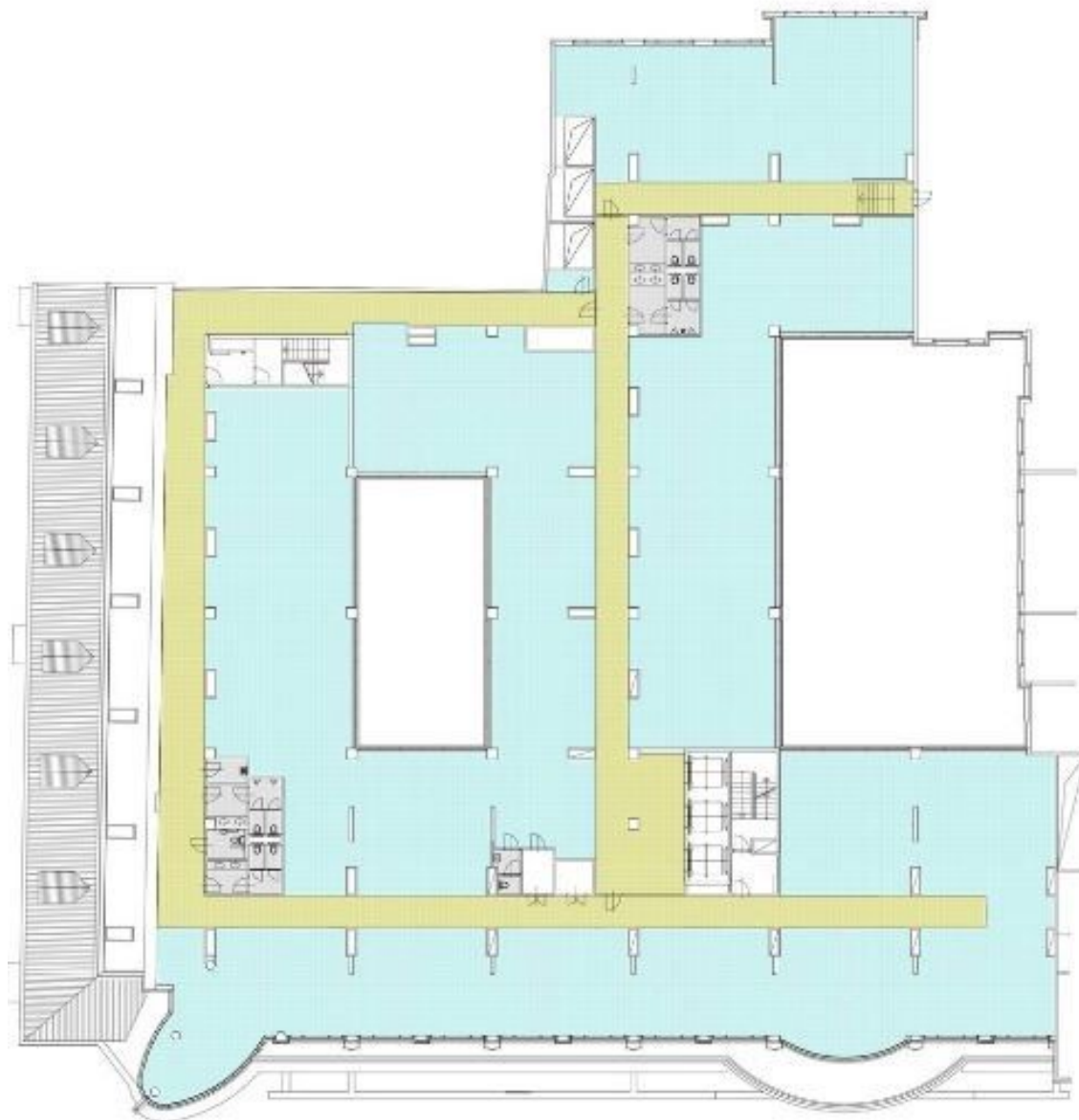




Office building

2 950 m², Prague 1, Staré Město, V Celnici

€ 18.75 / m² | CZK 472 / m²

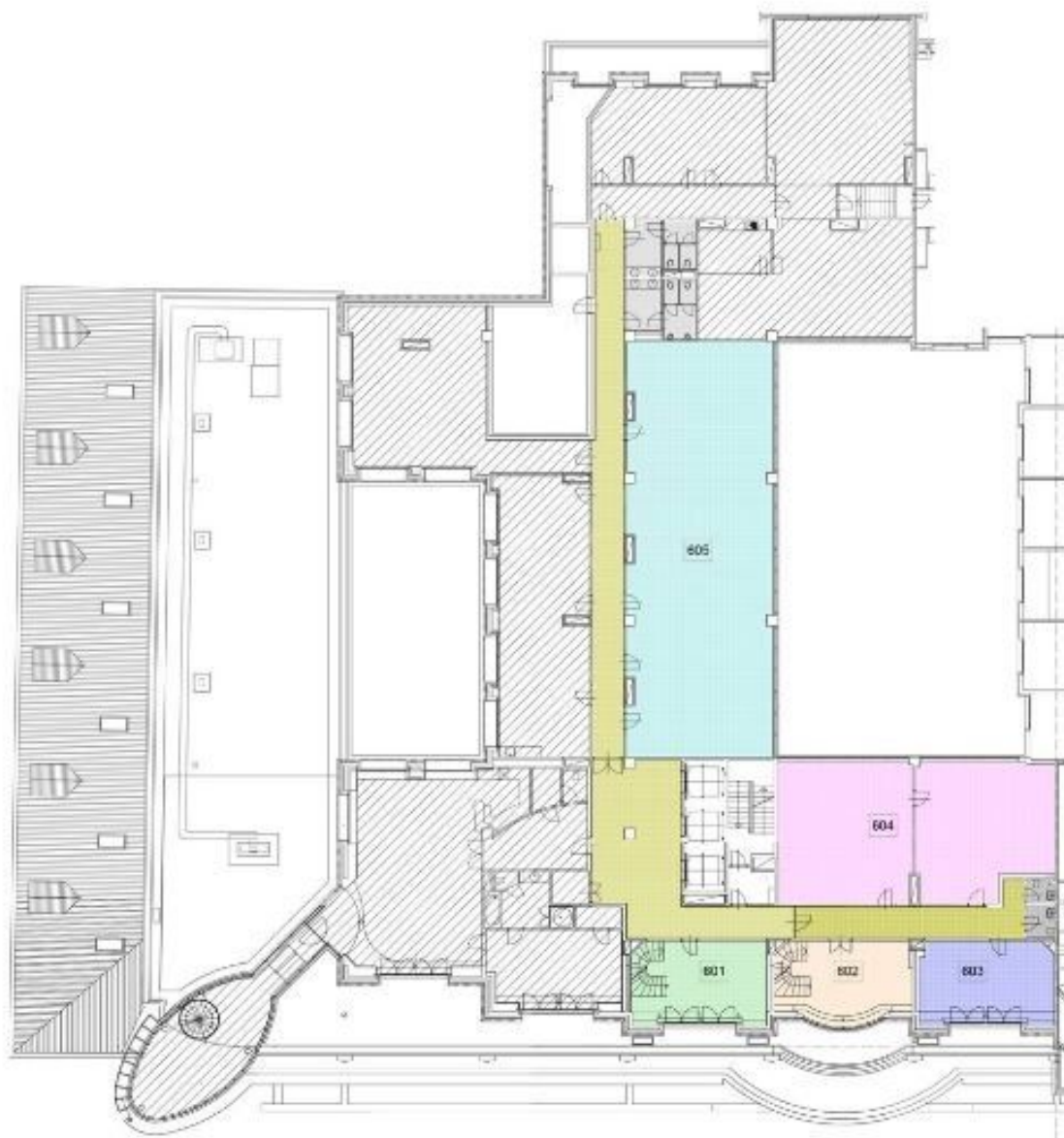




Office building

2 950 m², Prague 1, Staré Město, V Celnici

€ 18.75 / m² | CZK 472 / m²





Office building

2 950 m², Prague 1, Staré Město, V Celnici

€ 18.75 / m² | CZK 472 / m²

