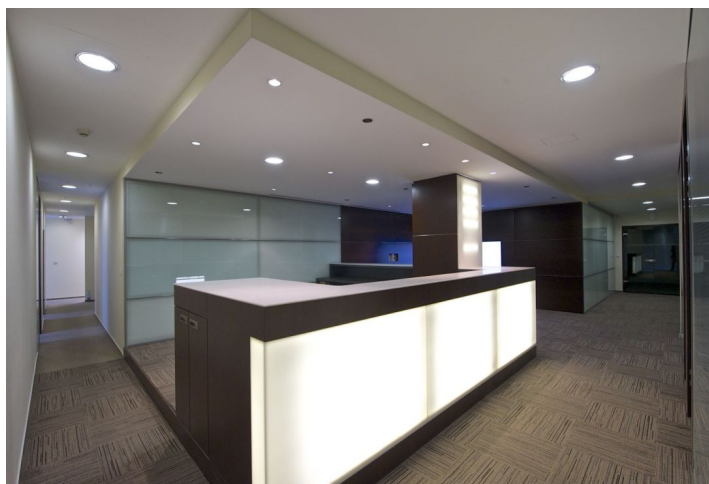


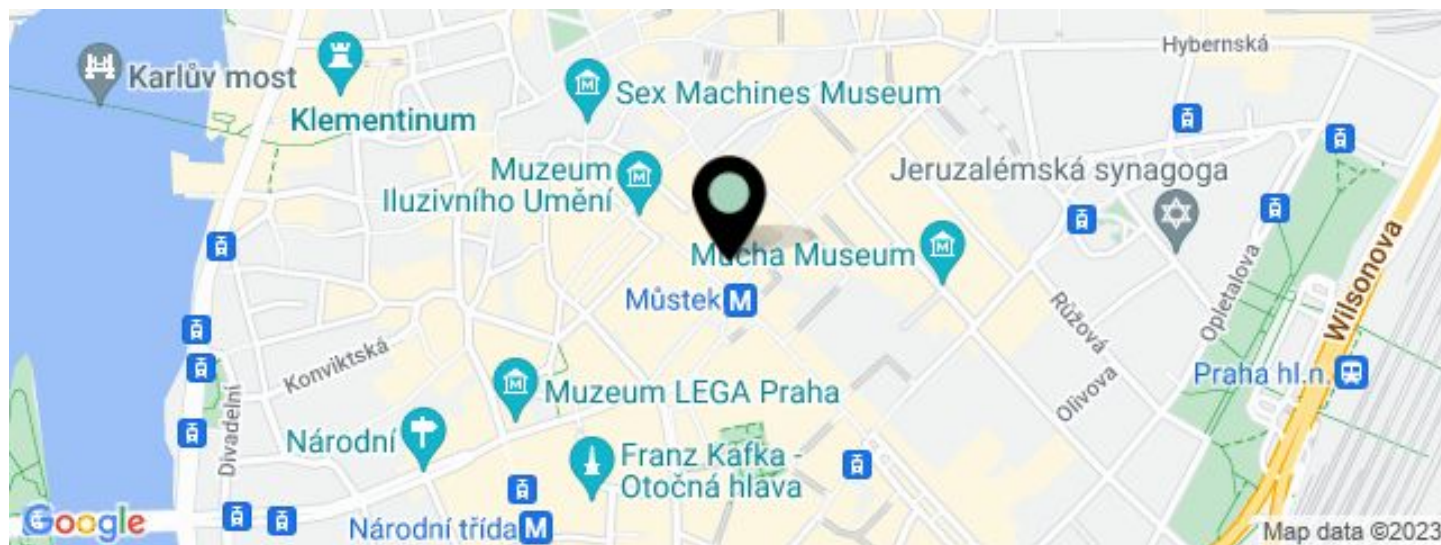


## Office building

648 m<sup>2</sup>, Prague 1, Staré Město, Na Příkopě

€ 13.00 / m<sup>2</sup> | CZK 327 / m<sup>2</sup>



**Office building****€ 13.00 / m<sup>2</sup> | CZK 327 / m<sup>2</sup>**648 m<sup>2</sup>, Prague 1, Staré Město, Na Příkopě

UNIT	AVAILABLE AREA	SERVICES	PARKING	MONTHLY RENT
Building B, Office space, 3rd floor	194 m <sup>2</sup>	130 CZK monthly per m <sup>2</sup>	No	€ 13 / m <sup>2</sup>
Building C, Office space, 2nd floor	324 m <sup>2</sup>	130 CZK monthly per m <sup>2</sup>	No	€ 13 / m <sup>2</sup>
Building C, Office space, 6th floor	130 m <sup>2</sup>	130 CZK monthly per m <sup>2</sup>	No	€ 13 / m <sup>2</sup>



## Office building

648 m<sup>2</sup>, Prague 1, Staré Město, Na Příkopě

€ 13.00 / m<sup>2</sup> | CZK 327 / m<sup>2</sup>

Service price	130 CZK monthly per m <sup>2</sup>
Total building area	5 800 m <sup>2</sup>
Tenant consumption	—
Parking	-
Parking service charges	—
Parking ratio	—
Certification	—
PENB	G
Reference number	15257

Office space for lease in an administrative complex from late functionalism, located at one of the attractive business addresses in Prague. The building consists of two houses with a facade and is connected by a modern passage with a glass-concrete vault. The building is dominated by impressive elements such as aerodynamically shaped glass entrances to the staircase.

### Location:

Prestigious location easily accessible by public transportation, Můstek (lines A, B) and Náměstí Republiky (line B) metro and trams are just steps away.

### Features and Services:

The ground floor features a luxury shopping gallery with a café, the offices are situated on the above floors. Attractive entrance area with 24-hour security, energy efficient building management, magnetic cards access, up to date telecommunication connection, air-conditioning, CCTV, lifts.

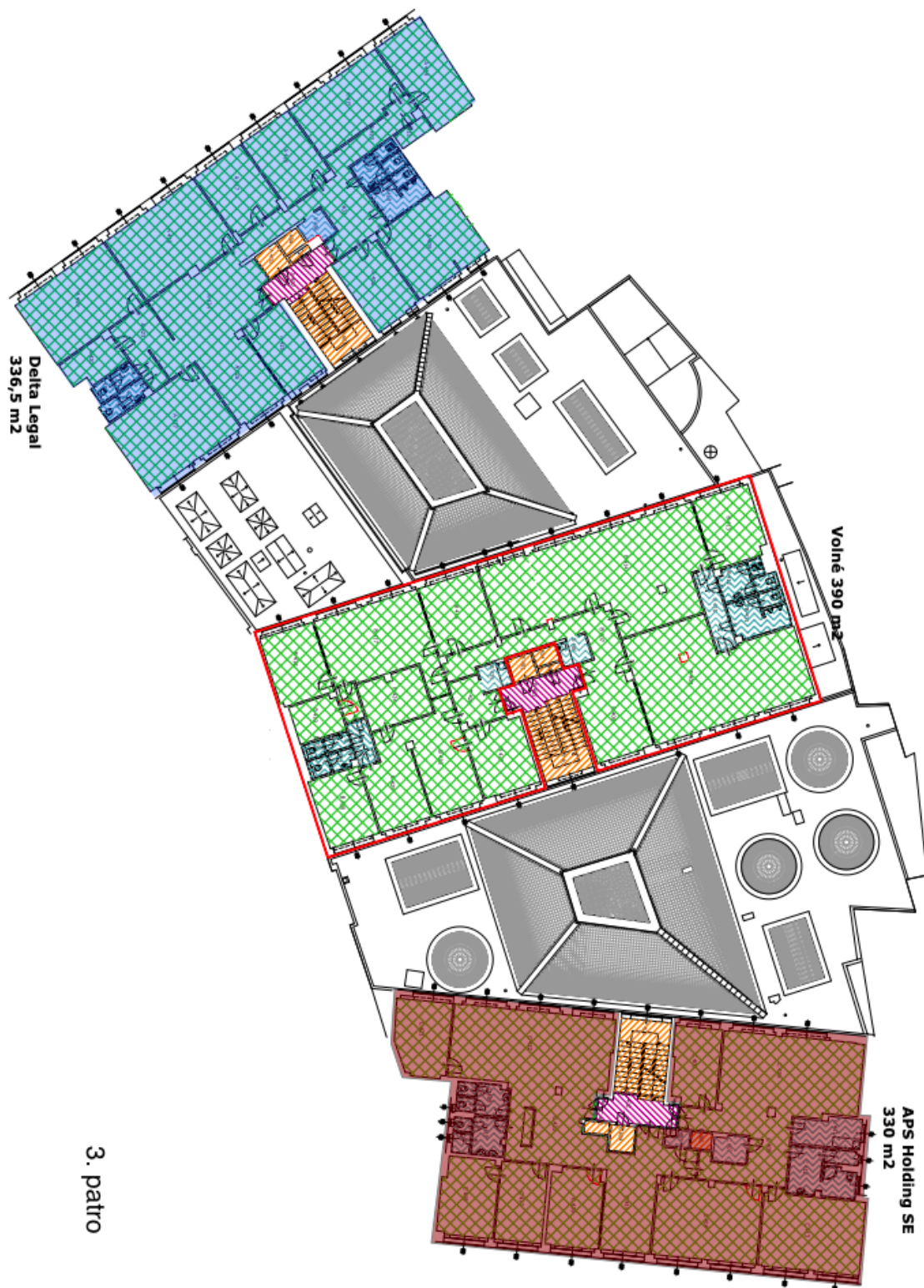
Rental and service charges listed without VAT. Lessee pays no commission.



# Office building

648 m<sup>2</sup>, Prague 1, Staré Město, Na Příkopě

€ 13.00 / m<sup>2</sup> | CZK 327 / m<sup>2</sup>



3. patro



# Office building

648 m<sup>2</sup>, Prague 1, Staré Město, Na Příkopě

€ 13.00 / m<sup>2</sup> | CZK 327 / m<sup>2</sup>

