



## Apartment One-bedroom (2+1)

Rented

84 m<sup>2</sup>, Praha 1, Nové Město, Ve Smečkách





## Apartment One-bedroom (2+1)

Rented

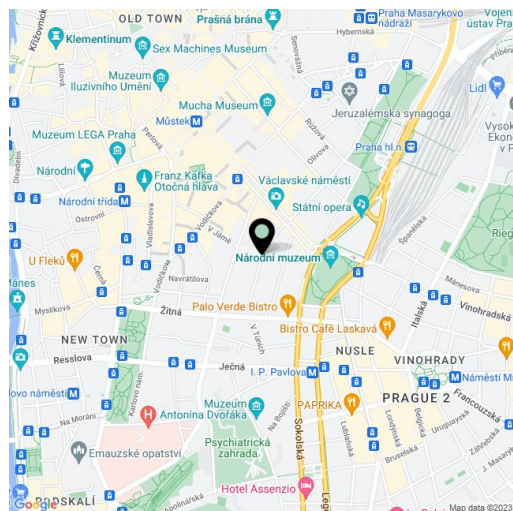
84 m<sup>2</sup>, Praha 1, Nové Město, Ve Smečkách

Total area	84 m <sup>2</sup>
Parking	-
Cellar	Yes
PENB	G
Reference number	15285
Available from	Immediately

This is a fully refurbished and furnished 1-bedroom design flat on the 2nd floor of a partly renovated traditional building without a lift. Attractively located just a minute walk from Wenceslas Square with immediate access to all three Prague metro lines and full amenities within easy reach.

The interior includes a living room, a fully fitted kitchen with a dining area, a bedroom with built-in wardrobes and an en-suite bathroom (bathtub, walk-in closet, toilet, bidet shower), an additional separate toilet with a bidet shower, and an entrance hall with built-in storage.

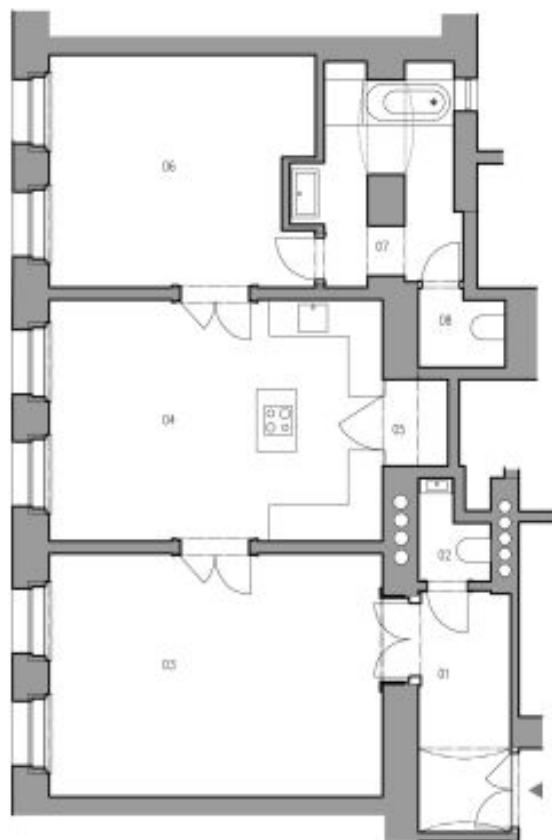
**Solid wood parquet floors**, tiles, high ceilings, security entry door, gas boiler, master switch, washing machine, dryer, Miele kitchen appliances, dishwasher, microwave oven, TV, alarm, **cellar**. Service charges and water bills: CZK 1000/person/month. Gas and electricity are billed separately (transfer to the tenant).



\* Area of the unit according to the Civil Code. The area consists of the sum total area of the entire unit bounded by perimeter walls.



## Apartment One-bedroom (2+1)

**Rented**84 m<sup>2</sup>, Praha 1, Nové Město, Ve Smečkách

ČÍSLO	ÚČEL MÍSTNOSTI	plocha (m <sup>2</sup> )
01	PŘEDSÍŇ	5,85
02	WC	1,7
03	OBYTNÝ POKOJ	24,7
04	KUCHYNĚ S JÍDELNOU	24,4
05	KOMORA / KOTELNA	0,85
06	LOŽNICE	16,5
07	KOUPELNA	8,7
08	WC	1,6
<b>BYTOVÁ JEDNOTKA 1766/10 CELKEM:</b>		<b>84,30 m<sup>2</sup></b>

poznámka:  
zařizovací předměty:  
příprava pro vanu a kuchyní  
finální dveře místně předmětem přípravy



**BYT 10**  
Ve Smečkách 1  
Praha 1 - Nové Město

Půdorys

Měřítko: M 1:100