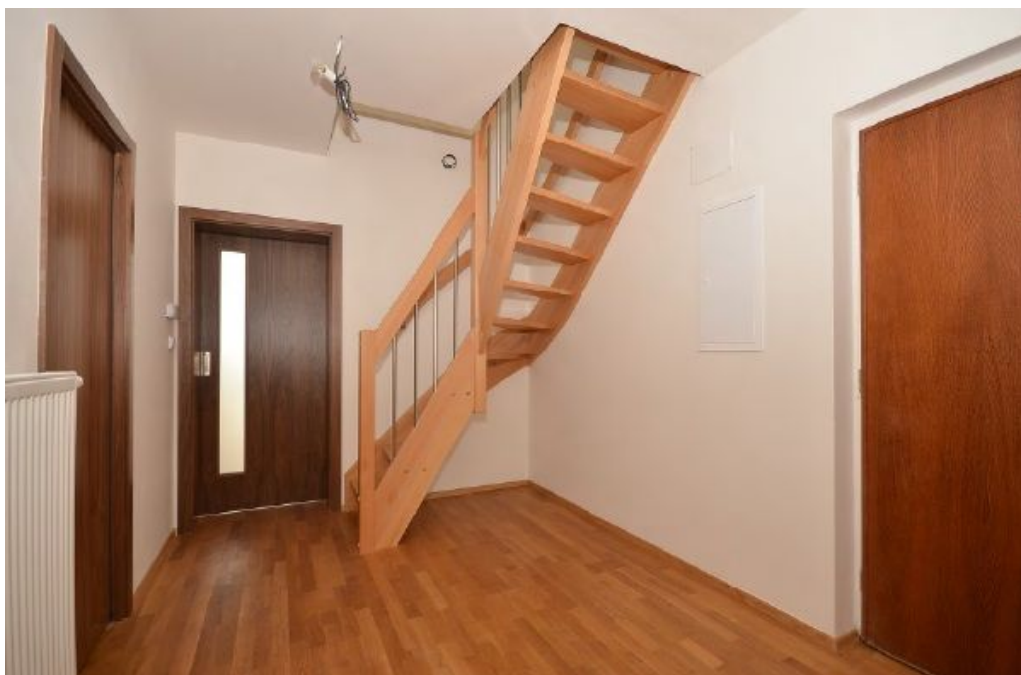




## Apartment Three-bedroom (4+kk)

134 m<sup>2</sup>, Prague 3, Žižkov, Řehořova

**Sold**



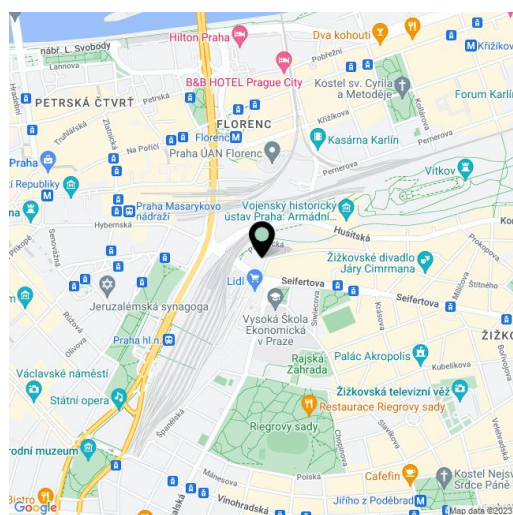


## Apartment Three-bedroom (4+kk)

**Sold**134 m<sup>2</sup>, Prague 3, Žižkov, Řehořova

Total area	150 m <sup>2</sup>
Floor area*	134 m <sup>2</sup>
Terrace	16 m <sup>2</sup>
Parking	-
Cellar	-
PENB	G
Reference number	1537

High standard attic apartment with terrace situated in apartment building, close to Riegrovy sady park, 3 minute walk to tram stops. Duplex apartment has living room, open kitchen, bedroom, bathroom and walk-in closet, top floor features 2 rooms, storage room and 2nd bathroom. Oak floors, Villeroy & Boch bathroom fittings, security entry door. Easy access to the city center. Interior 134.58 m<sup>2</sup>, terrace 15,92 m<sup>2</sup>.



\* Area of the unit according to the Civil Code. The area consists of the sum total area of the entire unit bounded by perimeter walls.