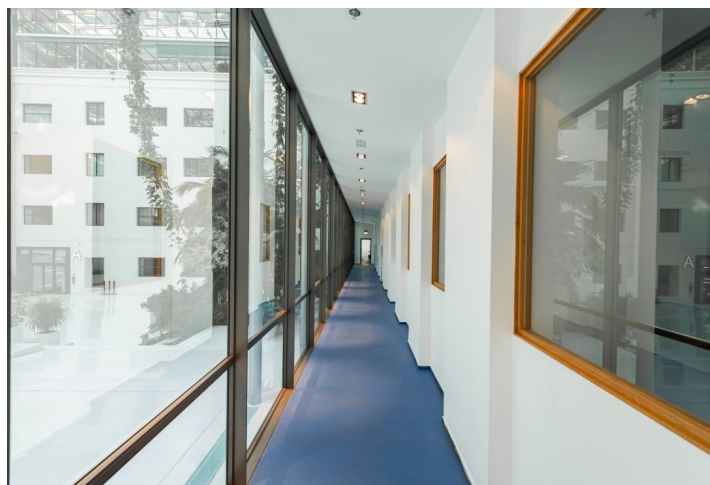
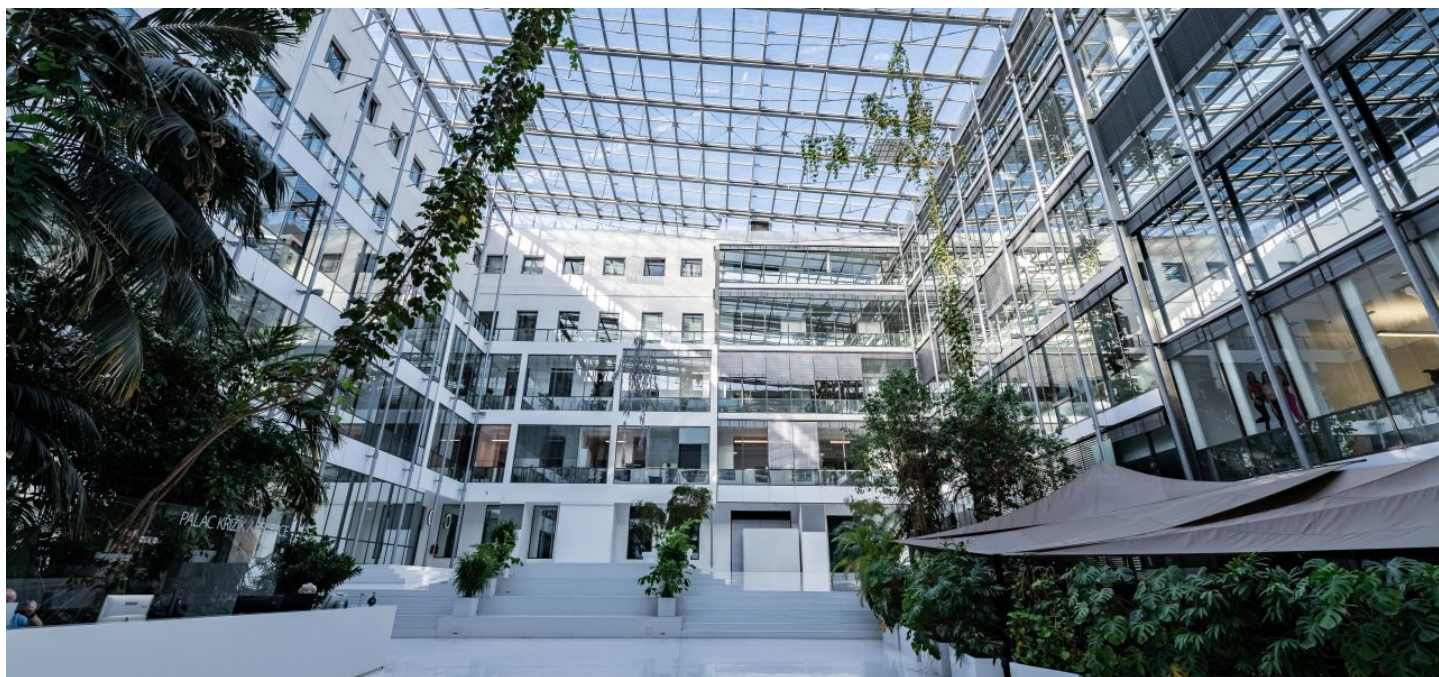


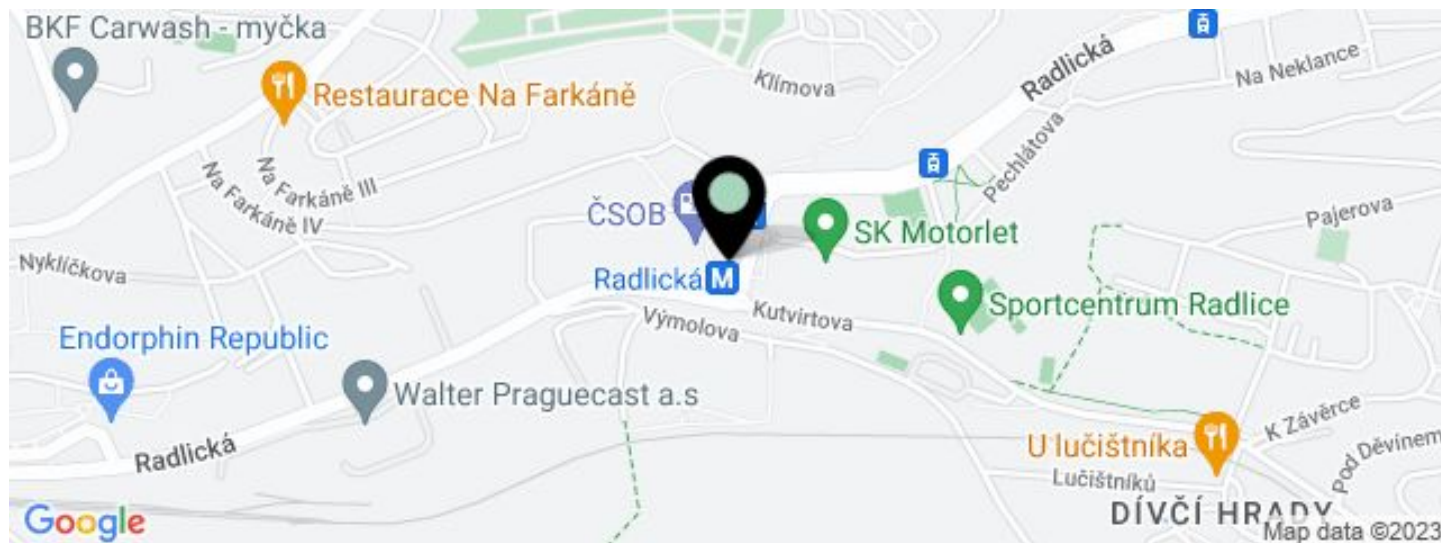


# Office building

€ 14.50 - 15.90 / m<sup>2</sup> | CZK 364 - 399 / m<sup>2</sup>

2 006 m<sup>2</sup>, Prague 5, Smíchov, Radlická



**Office building****€ 14.50 - 15.90 / m<sup>2</sup> | CZK 364 - 399 / m<sup>2</sup>**2 006 m<sup>2</sup>, Prague 5, Smíchov, Radlická

UNIT	AVAILABLE AREA	SERVICES	PARKING	MONTHLY RENT
Office space, 3rd floor	210 m <sup>2</sup>	110 CZK monthly per m <sup>2</sup>	EUR 120 / ps / month	€ 14.50 - 15.90 / m <sup>2</sup>
Office space, 2nd floor	127 - 367 m <sup>2</sup>	110 CZK monthly per m <sup>2</sup>	EUR 120 / ps / month	€ 14.50 - 15.90 / m <sup>2</sup>
Office space, 1st floor	565 m <sup>2</sup>	110 CZK monthly per m <sup>2</sup>	EUR 120 / ps / month	€ 14.50 - 15.90 / m <sup>2</sup>



## Office building

2 006 m<sup>2</sup>, Prague 5, Smíchov, Radlická

€ 14.50 - 15.90 / m<sup>2</sup> | CZK 364 - 399 / m<sup>2</sup>

Service price	110 CZK monthly per m <sup>2</sup>
Total building area	19 082 m <sup>2</sup>
Tenant consumption	—
Parking	120 EUR
Parking service charges	—
Parking ratio	—
Certification	—
PENB	G
Reference number	15391

Modern administrative complex offers high quality office space for lease in Prague 5. The complex consists of a historic building that has undergone a reconstruction and a modern building with many shops and restaurants and a covered atrium in the courtyard. The building is one of the most advanced intelligent buildings in Prague with a fully integrated and centralized management system controlling security, access, lighting and energy.

### Location:

The building is within walking distance of the Anděl metro station (line B) and shopping zone. The offices are very easily accessible by car and public transportation, with a number of tram stops, a bus and train station.

### Features and Services:

Central receptions in historic and modern building  
Security service 24/7  
Lifts  
Magnetic card access  
Air-conditioning  
Partly openable windows  
Heavy duty carpets  
Equipped kitchenettes  
Underground parking

Rental and service charges listed without VAT. Lessee pays no commission.