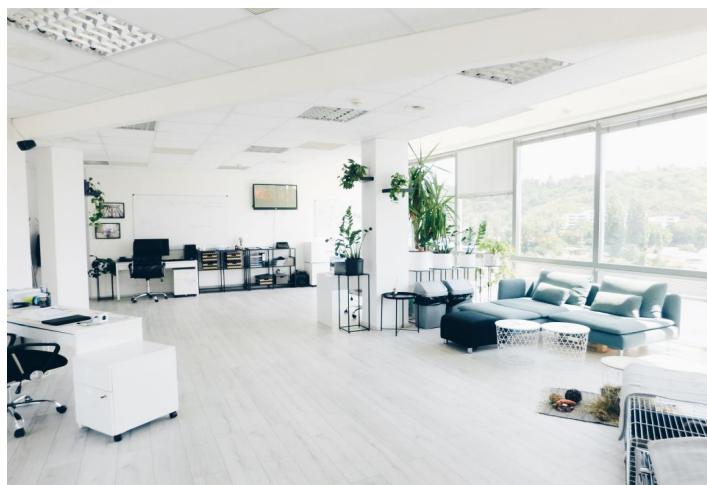
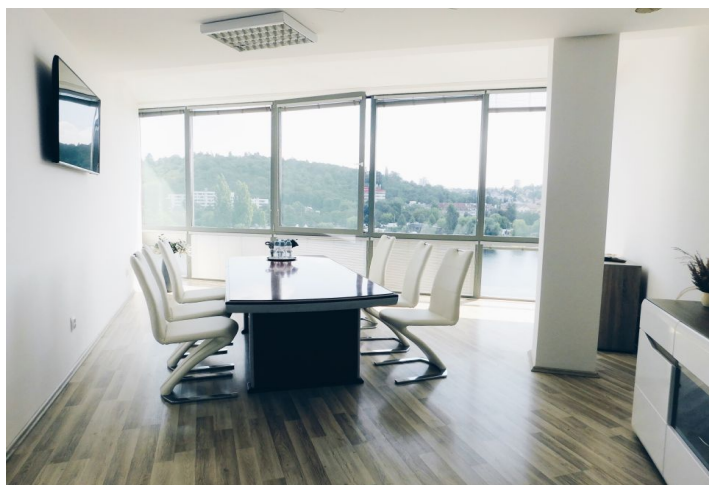
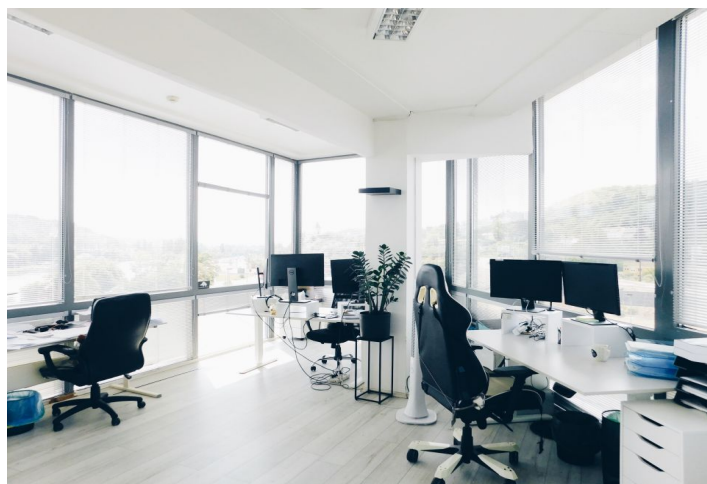
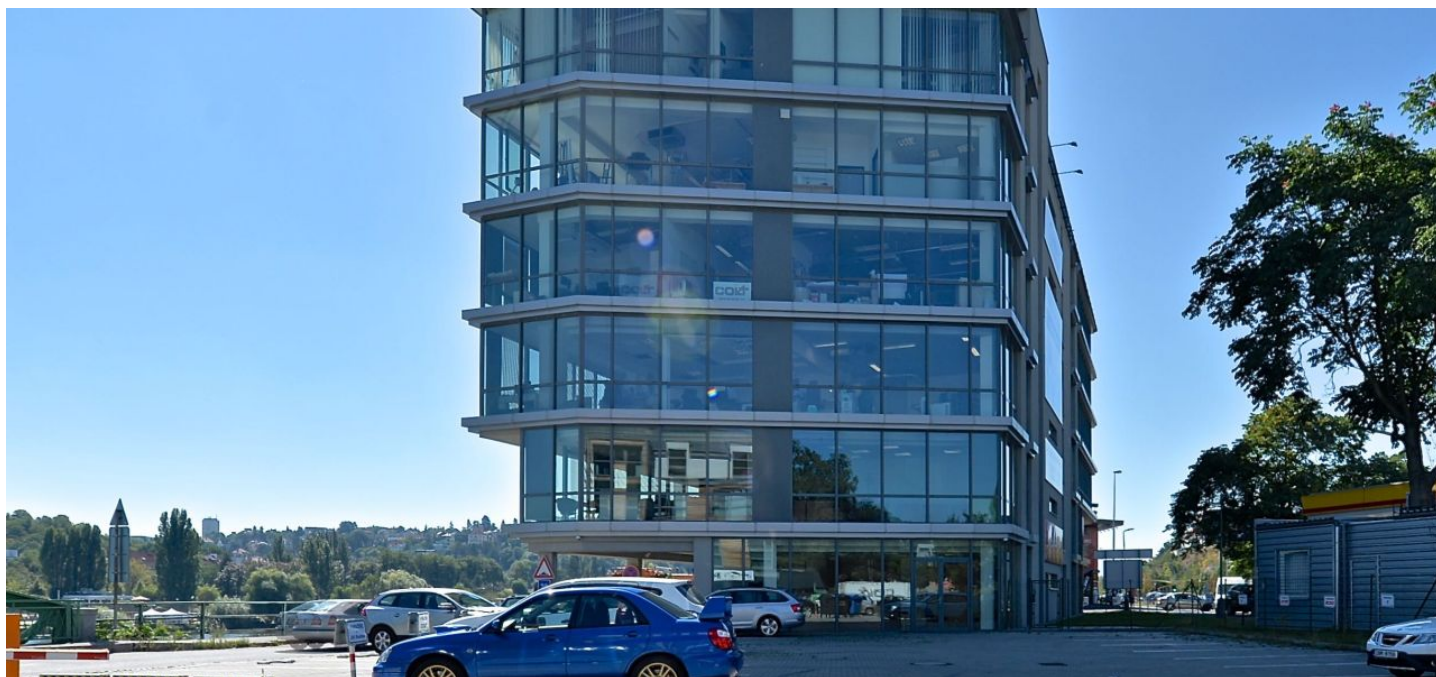




Office building

Praha 5, Smíchov, Strakonická

Rented



**Office building**

Praha 5, Smíchov, Strakonická

Rented

Service price	140 CZK monthly per m ²
Total building area	3 830 m ²
Tenant consumption	—
Parking	Yes
Parking service charges	—
Parking ratio	—
Certification	—
PENB	B
Reference number	15395

Modern commercial building by the Vltava River it's location acts as a sort of gateway to Prague's Smíchov. Building offers quality office space for lease in Prague 5 with excellent visibility and views of Prague Castle and Vyšehrad. Possibility to use a private fitness center.

Location:

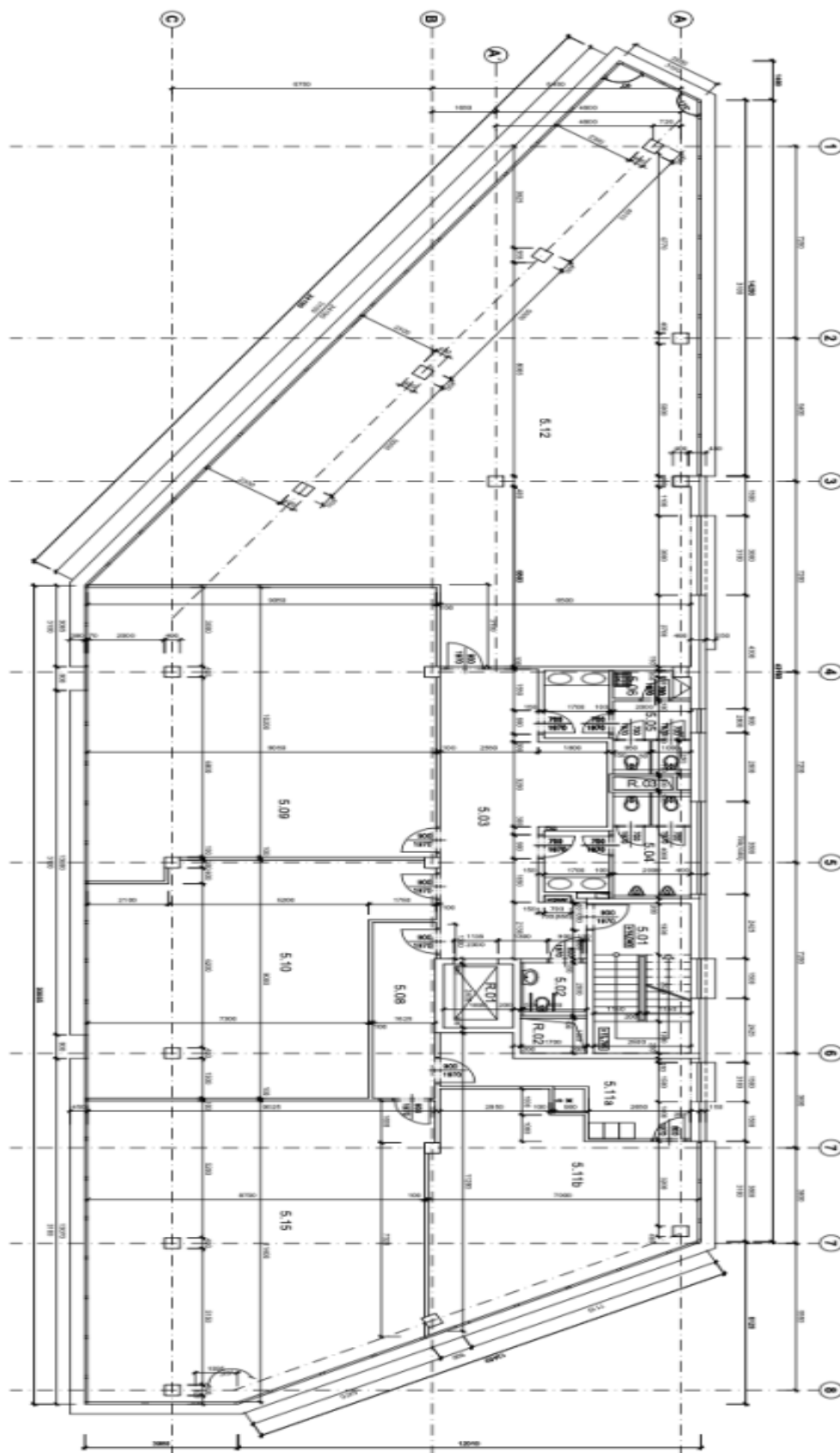
Excellent transportation connections – less than 4 minutes' walk from the Smíchovské nádraží (line B) metro station, tram, bus and train station. International Václav Havel airport reachable within 20 minutes. All essential services within walking distance (post office, shops, restaurants, hotels, pharmacy, gas station, fitness center, in-door golf, tennis, squash, swimming pool, etc.).

Facilities and services:

Central reception
 Concierge services
 24/7 security guard
 Shared electricity
 Heating common areas
 Drain water drainage
 Cleaning and maintenance of common areas
 Joint municipal waste disposal
 Private fitness center

Rental price EUR 5.90/m²/month for the first month of lease!

Rental and service charges listed without VAT. Lessee pays no commission.



PŮDORYS 5.NP