



Office building

Prague 5, Smíchov, Nádražní

Rented





Office building

Prague 5, Smíchov, Nádražní

Rented

Service price	100 CZK monthly per m ²
Total building area	13 197 m ²
Tenant consumption	—
Parking	150 EUR
Parking service charges	—
Parking ratio	—
Certification	—
PENB	G
Reference number	15446

Six-story administrative building by Jean Nouvel architect with office space for lease located in Anděl, next to one of Prague's most popular shopping centers.

Location:

Very good accessibility by car and public transportation – the Anděl (line B) metro station is located just below the building, while a number of tram stops and a bus and train station are all nearby.

Features and services:

Flexible floor plan – open space or separate offices. Features include raised floors, carpets, interior blinds, and storage. There is an entrance with a reception desk, 24-hour security, and professional property management. Parking spaces available in the building's underground parking garage.

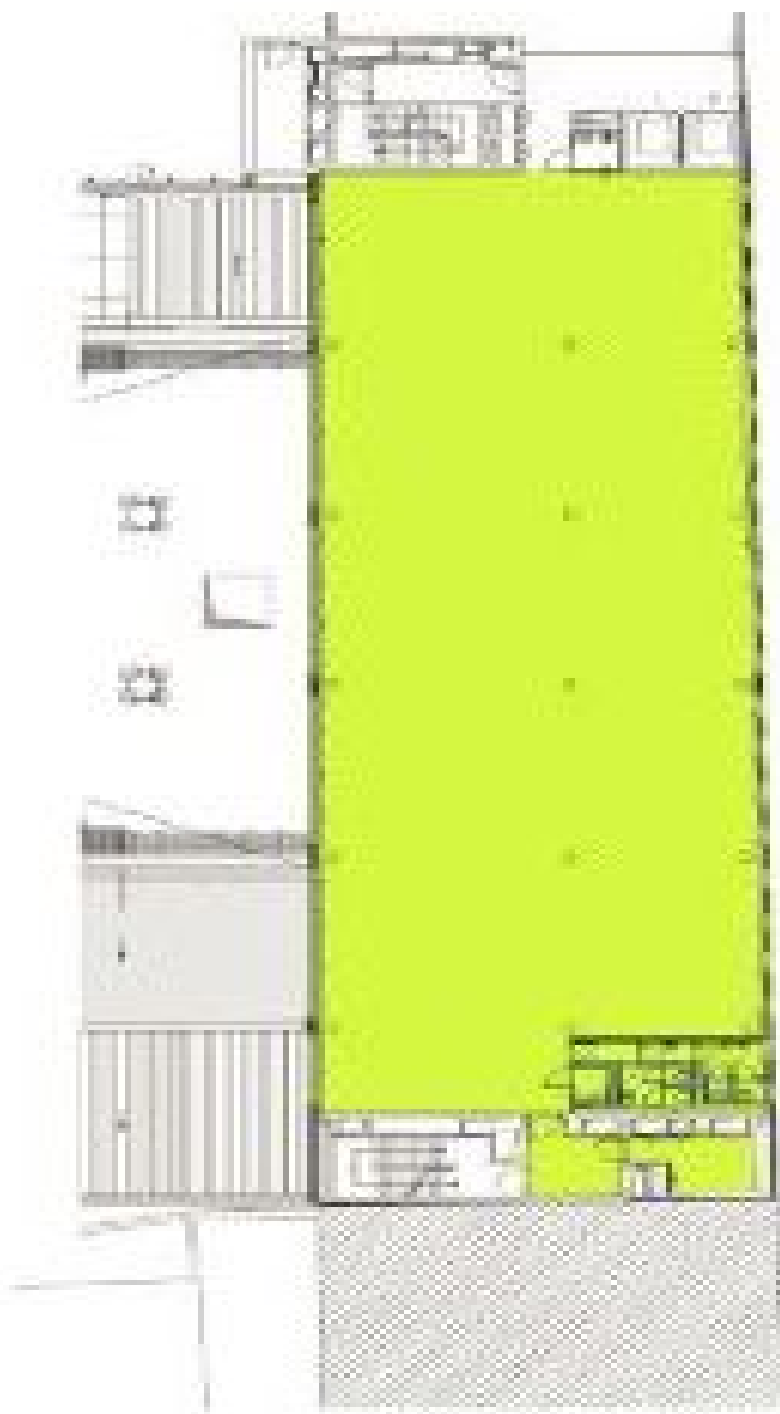
Rental and service charges listed without VAT. Lessee pays no commission.



Office building

Prague 5, Smíchov, Nádražní

Rented



2. patro | 2nd floor