



Office building

Prague 6, Veleslavín, Evropská

Rented





Office building

Prague 6, Veleslavín, Evropská

Rented

Service price	70 CZK monthly per m ²
Total building area	17 094 m ²
Tenant consumption	—
Parking	80 EUR
Parking service charges	—
Parking ratio	—
Certification	—
PENB	D
Reference number	15479

Administrative building with office premises for lease situated in Prague 6. This architecturally interesting building from the 1970s was designed by famous Czech architects Stanislav Franc, Jan Nováček and Vladimír Fencel.

Location:

Very good accessibility by car and public transport – tram and bus stops directly outside the building, in close vicinity of the metro station Nádraží Veleslavín (line A). Easy access to Vaclav Havel Airport Prague and to the city center.

Features and Services:

- Non-stop central reception desk with security guard and 24/7 access to leased premises
- 4 passenger lifts and a service lift
- Highly flexible layout concept
- Telephone lines and Internet connection
- Air-conditioning
- Suspended ceilings with integrated light fittings
- Openable windows with internal blinds
- New carpets
- 2 kitchenettes and ample restrooms on every floor
- BBC fitness operator onsite, restaurant with outdoor patio
- Outdoor and garage parking

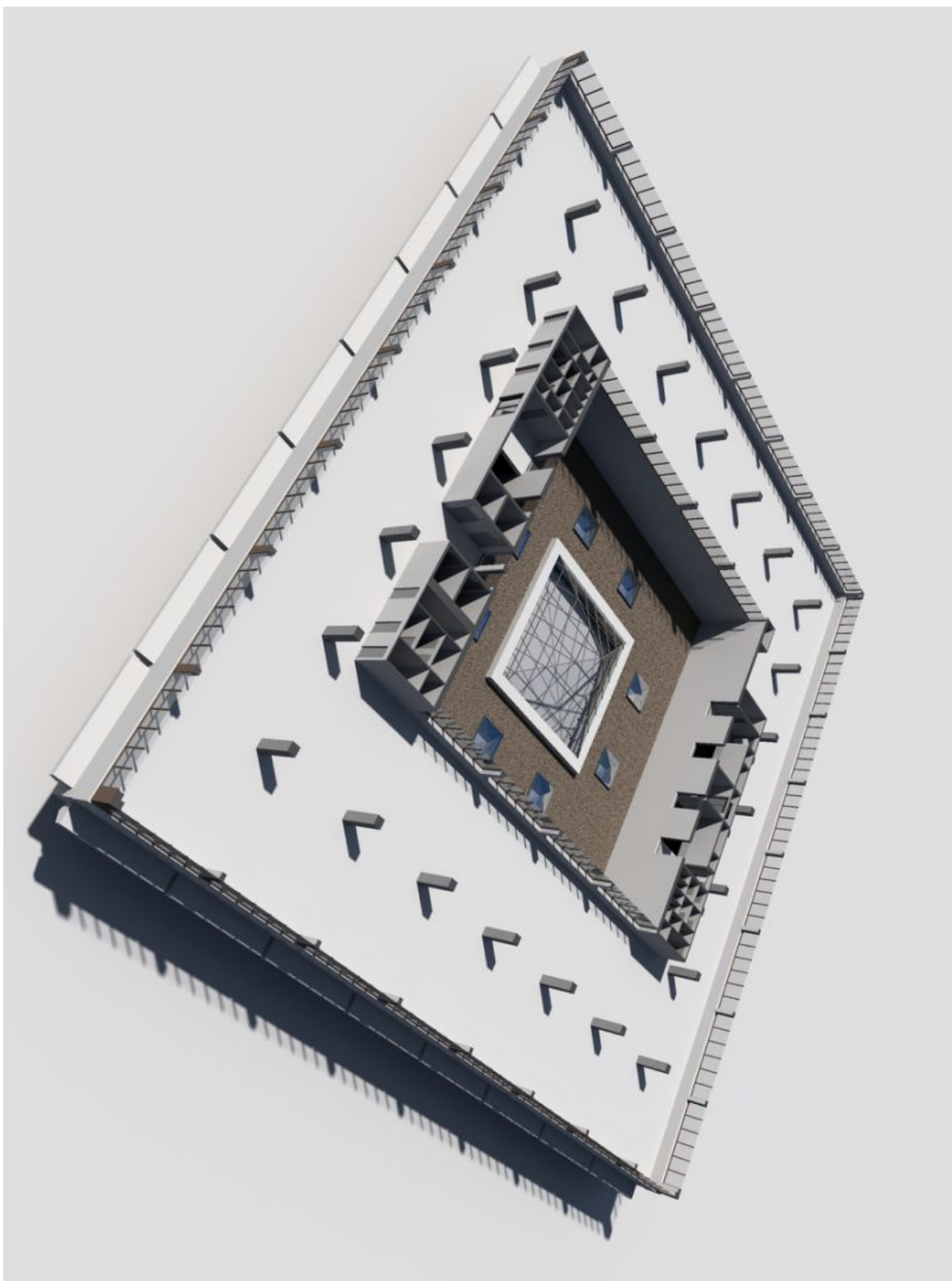
Rental and service charges are listed without VAT. Lessee pays no commission.



Office building

Prague 6, Veleslavín, Evropská

Rented

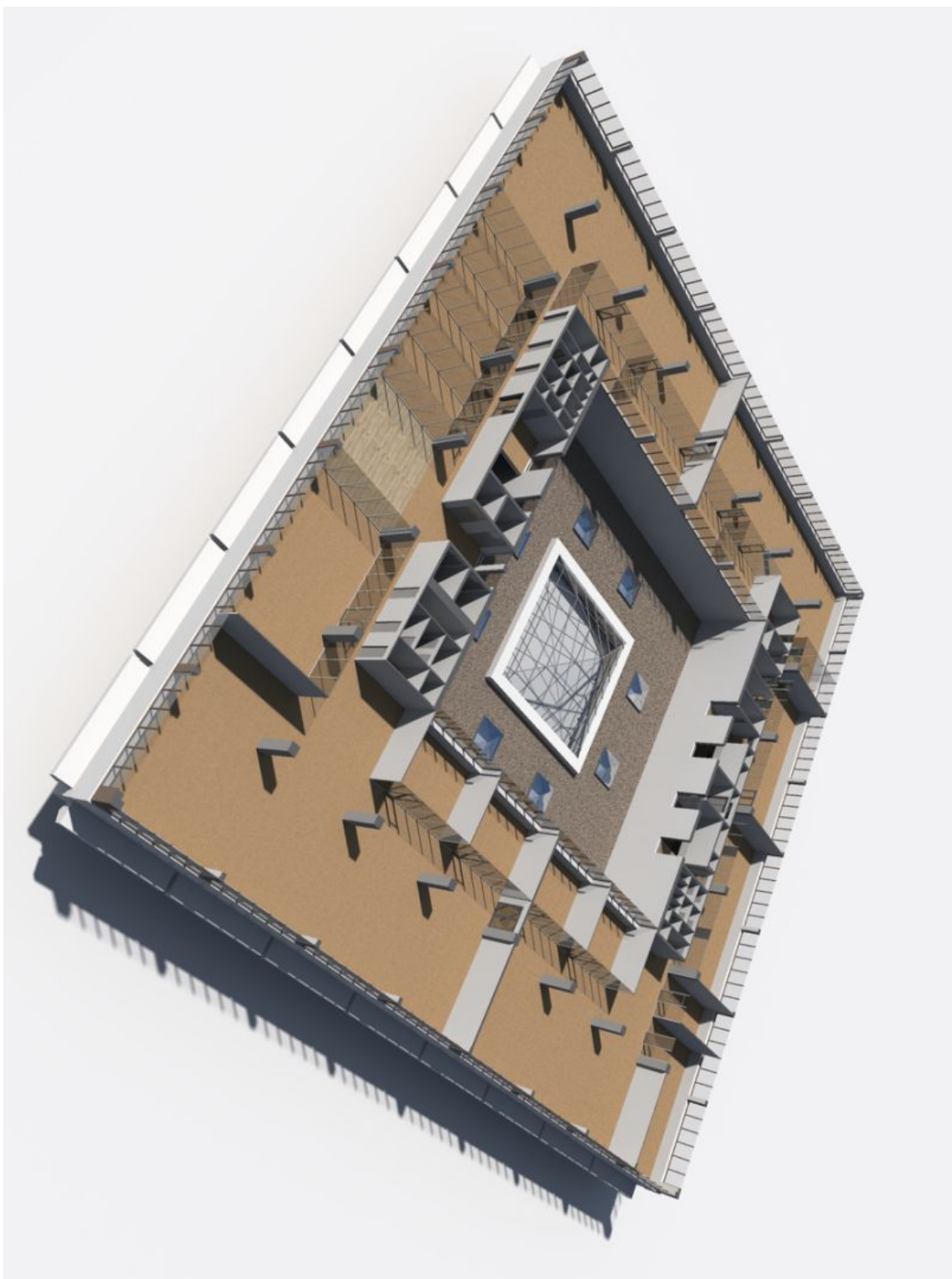




Office building

Prague 6, Veleslavín, Evropská

Rented





Office building

Prague 6, Veleslavín, Evropská

Rented

