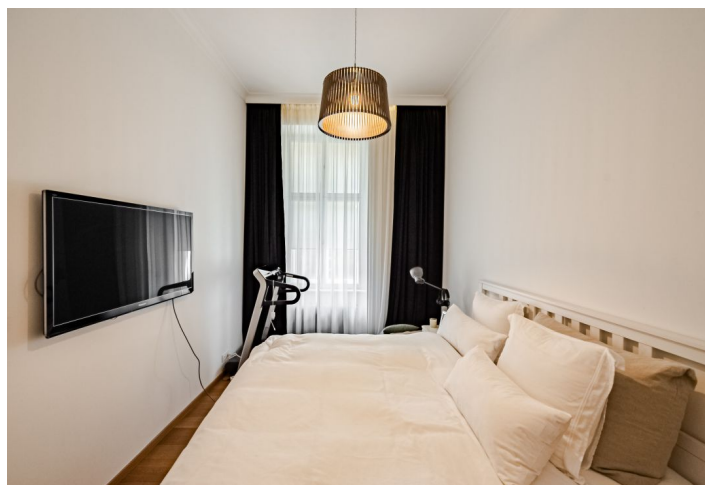




## Apartment Two-bedroom (3+kk)

Rented

114 m<sup>2</sup>, Prague 1, Nové Město, Křemencova





## Apartment Two-bedroom (3+kk)

Rented

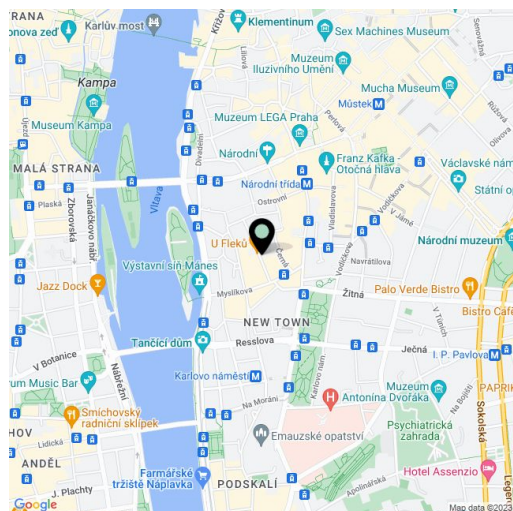
114 m<sup>2</sup>, Prague 1, Nové Město, Křemencova

Total area	114 m <sup>2</sup>
Parking	-
Cellar	-
PENB	D
Reference number	15493
Available from	Immediately

**High-standard, air-conditioned 2-bedroom 2-bathroom apartment on the first floor of a newly fully refurbished residence with an elevator, a reception, preserved original features, a green atrium, a camera system, and on-site parking, on a quiet street in the center of Prague, a short walk from Karlovo Náměstí Square. Conveniently located for shopping, bars, and restaurants, within easy reach of major public transportation links (tram, metro).**

The interior features a spacious living room with a fully fitted open plan kitchen and dining area, two bedrooms, each with an en-suite bathroom with a toilet (bathtub/shower), a walk-in closet, a utility room, and an entry hall with built-in wardrobes.

Oak floors, tiles, security door, built-in storage, quality appliances, gas boiler, central switch, alarm. On-site property manager. Common building charges CZK 3,300/month. Utilities are billed separately. Available from 1st of September 2022.



\* Area of the unit according to the Civil Code. The area consists of the sum total area of the entire unit bounded by perimeter walls.