



Office building

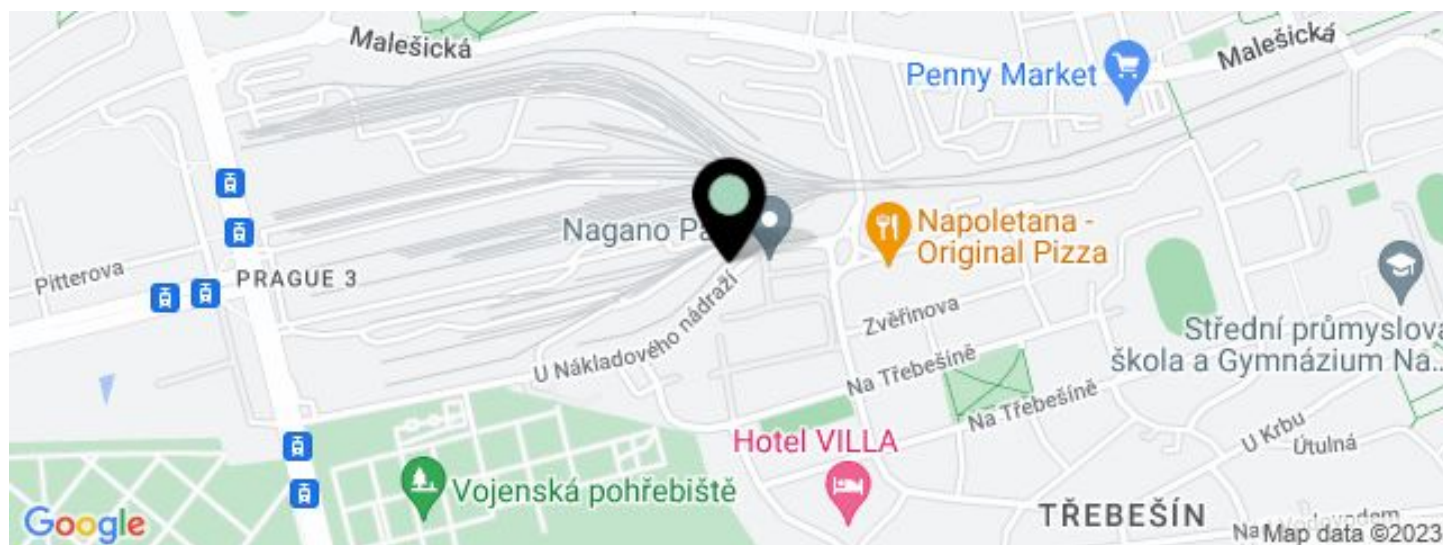
€ 10.76 - 11.56 / m² | CZK 270 - 290 / m²

2 702 m², Prague 3, Strašnice, U Nákladového nádraží





Office building

€ 10.76 - 11.56 / m² | CZK 270 - 290 / m²2 702 m², Prague 3, Strašnice, U Nákladového nádraží

UNIT	AVAILABLE AREA	SERVICES	PARKING	MONTHLY RENT
Building IV, Office space, 2nd floor	104 m ²	100 CZK monthly per m ²	EUR 75 / ps / month	€ 10.76 - 11.56 / m ²
Building III, Office space, 1st floor	791 m ²	100 CZK monthly per m ²	EUR 75 / ps / month	€ 10.76 - 11.56 / m ²
Building I, Office space, 4th floor	551 - 1807 m ²	100 CZK monthly per m ²	EUR 75 / ps / month	€ 10.76 - 11.56 / m ²

**Office building****€ 10.76 - 11.56 / m² | CZK 270 - 290 / m²**2 702 m², Prague 3, Strašnice, U Nákladového nádraží

Service price	100 CZK monthly per m ²
Total building area	18 527 m ²
Tenant consumption	—
Parking	75 EUR
Parking service charges	—
Parking ratio	—
Certification	—
PENB	D
Reference number	15557

Business park, completed in 2003, consists of four office buildings offering office space for lease in Prague 3 - Strašnice. The complex offers storage spaces, 2 restaurants and a free fitness centre for tenants.

Location:

The building is easily accessible by car and public transport - bus and tram stops nearby, Želivského metro station (line A) is about 15 minutes walk away. Own shuttle bus in the morning and afternoon.

Features and Services:

Central reception
 Security service 24/7
 Data center
 Intelligent Building Management System
 Facility management
 Meeting room
 High speed elevators
 Air conditioning
 Suspended ceilings
 Storage space
 Bistro, restaurant and fitness center
 Secure car parking

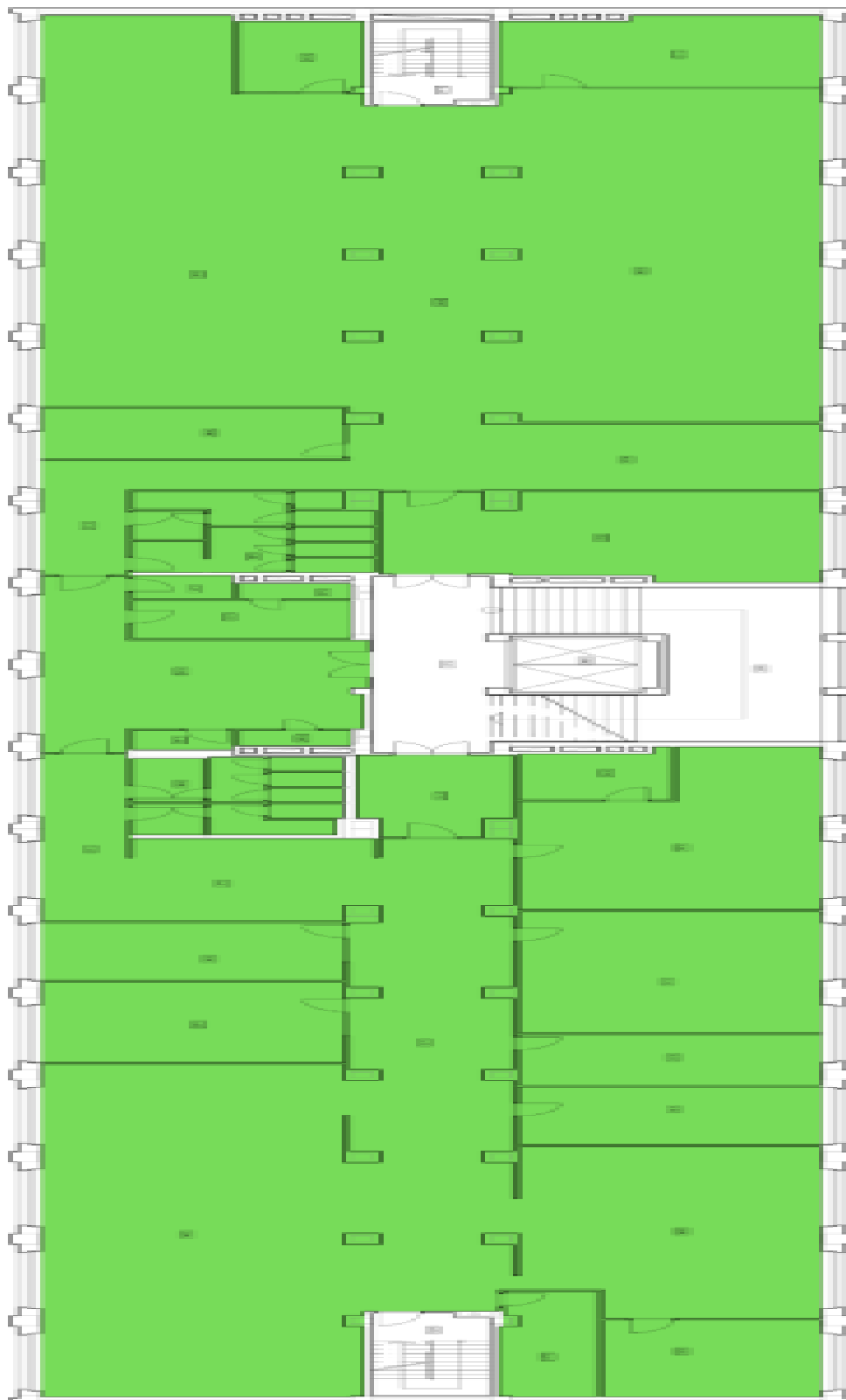
Rental and service charges listed without VAT. Lessee pays no commission.



Office building

€ 10.76 - 11.56 / m² | CZK 270 - 290 / m²

2 702 m², Prague 3, Strašnice, U Nákladového nádraží

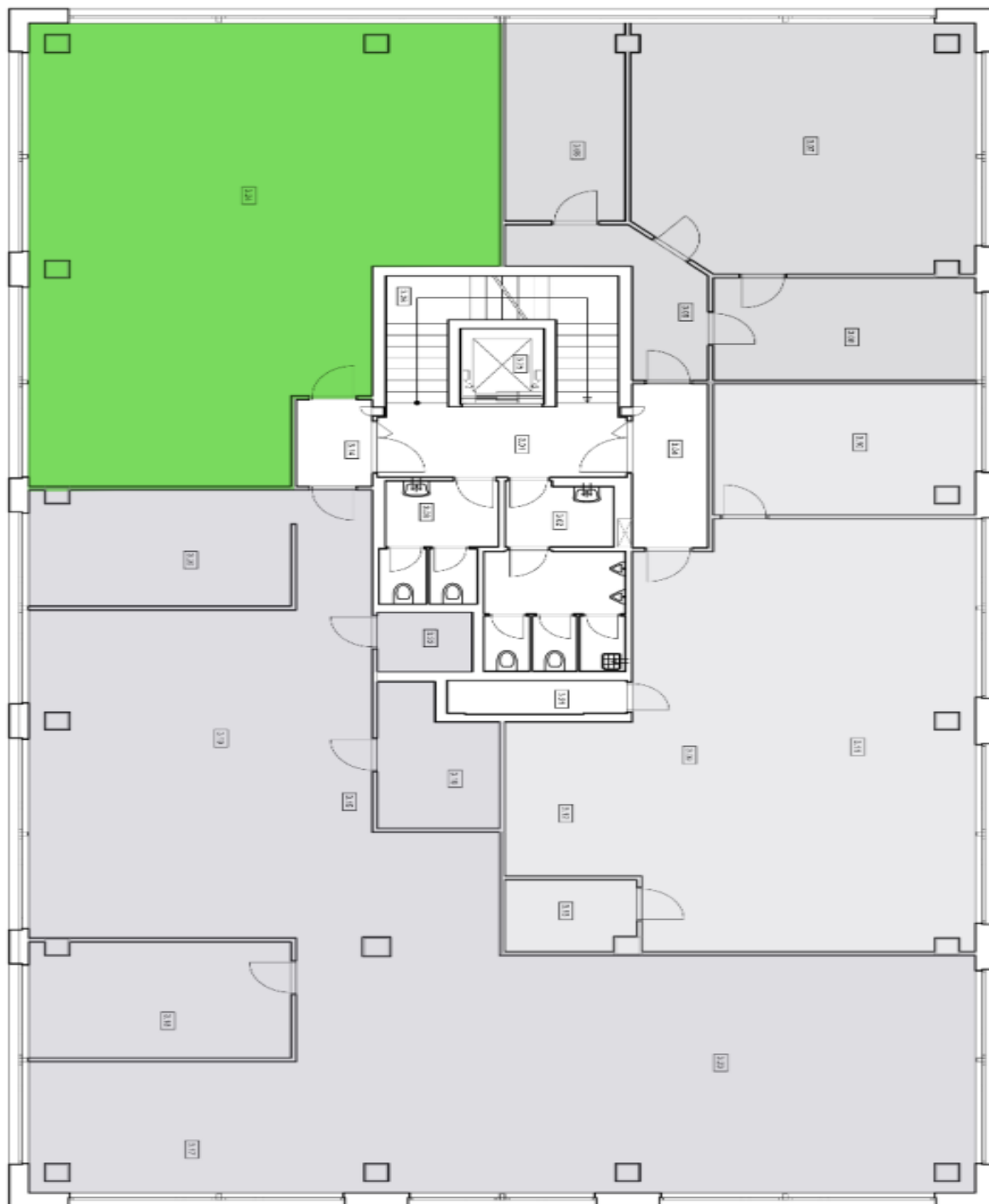




Office building

€ 10.76 - 11.56 / m² | CZK 270 - 290 / m²

2 702 m², Prague 3, Strašnice, U Nákladového nádraží





Office building

€ 10.76 - 11.56 / m² | CZK 270 - 290 / m²

2 702 m², Prague 3, Strašnice, U Nákladového nádraží

