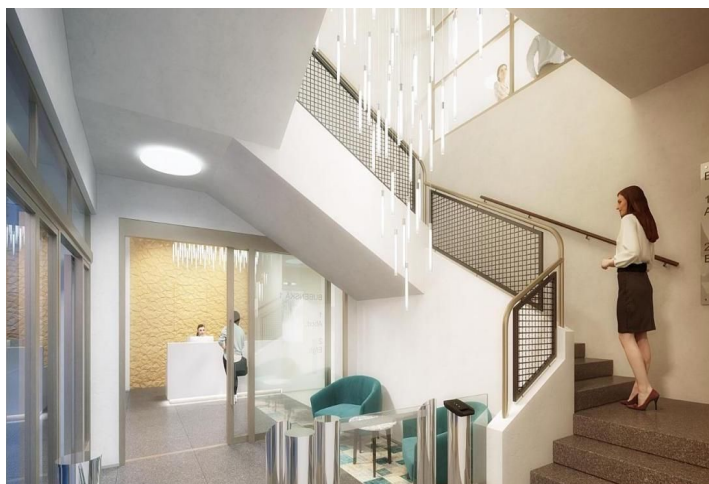




# Office building

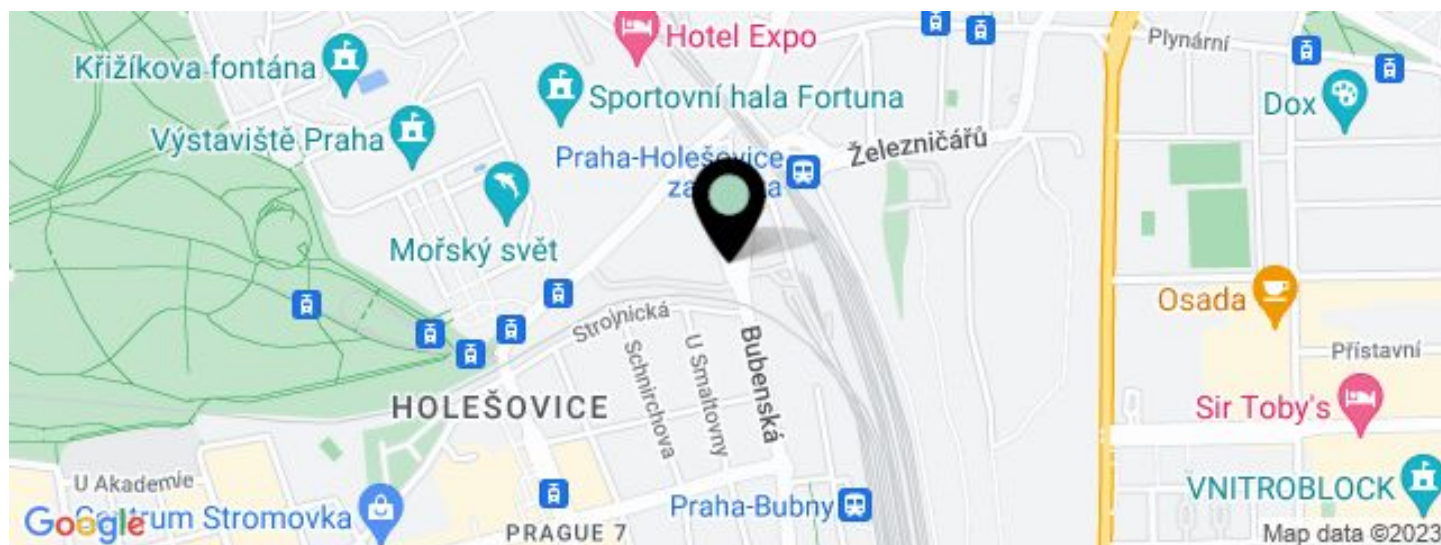
€ 15.40 - 27.28 / m<sup>2</sup> | CZK 389 - 689 / m<sup>2</sup>

Prague 7, Holešovice, Bubenská



**Office building****€ 15.40 - 27.28 / m<sup>2</sup> | CZK 389 - 689 / m<sup>2</sup>**

Prague 7, Holešovice, Bubenská



UNIT	AVAILABLE AREA	SERVICES	PARKING	MONTHLY RENT
Retail, R3, ground floor, bathroom studio	242 m <sup>2</sup>	155 CZK monthly per m <sup>2</sup>	Yes	€ 23.76 / m <sup>2</sup>
Retail, R2, ground floor, wine shop	40 m <sup>2</sup>	155 CZK monthly per m <sup>2</sup>	No	€ 27.52 / m <sup>2</sup>
Retail, R5, ground floor, showroom/gallery	1100 - 1650 m <sup>2</sup>	155 CZK monthly per m <sup>2</sup>	CZK 3 250 / ps / month	€ 15.17 / m <sup>2</sup>

**Office building**

Prague 7, Holešovice, Bubenská

**€ 15.40 - 27.28 / m<sup>2</sup> | CZK 389 - 689 / m<sup>2</sup>**

Service price	90 CZK monthly per m <sup>2</sup>
Total building area	25 560 m <sup>2</sup>
Tenant consumption	—
Parking	130 EUR
Parking service charges	—
Parking ratio	—
Certification	—
PENB	E
Reference number	15562

**Office space for rent in a completely reconstructed historic office building located in Holešovice on Bubenská Street at the head of Hlávkův Bridge. The building was opened to the public in 1935 and is one of the most important Functionalist buildings in Prague, protected as a cultural monument. Its facade is an eloquent example of the architecture of the 1930s, and the building itself boasts a number of unique technical features, creating a unique atmosphere that current administrative buildings are unable to offer.**

**Location:**

With convenient connections to an exposed arterial road and the Prague Ring Road, the Blanka tunnel, and the D1 and D8 motorways. The Vltavska metro station (line C) and tram stops are close-by. The Holešovice Train and Bus Station, and Stromovka Park are only one metro stop away.

**Technical specifications:**

- flexible office space
- magnetic card access
- CCTV
- 24/7 central reception
- central air conditioning
- openable windows
- lighting
- toilets, kitchenette
- sprinkler system and fire-fighting equipment
- warehouse space
- parking spaces in a ratio of 1:140m<sup>2</sup>
- ceilings with built-in lighting
- double floors
- floor boxes (1 box / 20 m<sup>2</sup>, 2+2)
- bicycle storage and showers

Rental and service charges listed without VAT. Lessee pays no commission.



# Office building

€ 15.40 - 27.28 / m<sup>2</sup> | CZK 389 - 689 / m<sup>2</sup>

Prague 7, Holešovice, Bubenská

