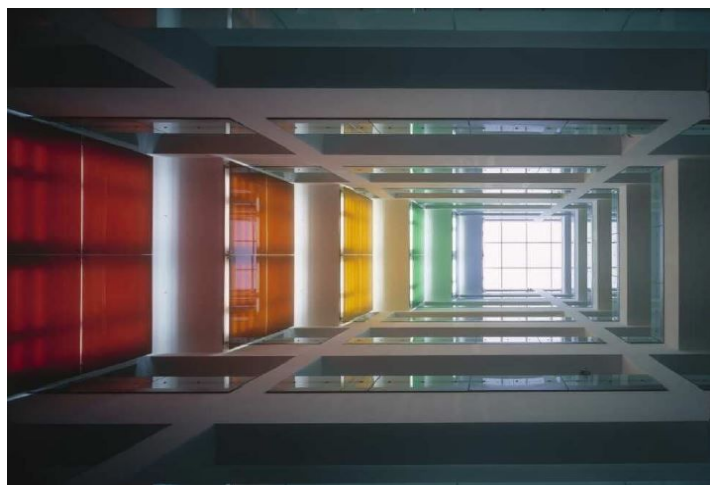
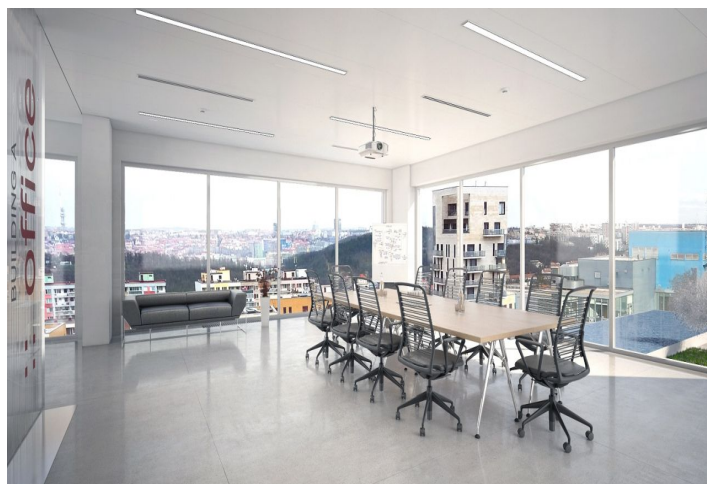




Office building

Prague 4, Michle, Vyskočilova

Rented



**Office building**

Prague 4, Michle, Vyskočilova

Rented

Service price	100 CZK monthly per m ²
Total building area	16 000 m ²
Tenant consumption	—
Parking	100 EUR
Parking service charges	—
Parking ratio	—
Certification	—
PENB	B
Reference number	15569

Reconstructed administrative building with office premises for lease situated in the commercial district of Prague 4.

Location:

Very good accessibility by car and public transport – Budějovická and Kačerov metro stations (line C) are just 2 minutes by bus or 8 minutes on foot. A shuttle bus connects the building with the metro stations. Easy access to Prague's city ring and to the D1 highway leading to Brno.

Features and Services:

- Central reception
- Security service 24/7
- Access by magnetic card
- Roof terrace with water feature
- Flexible office layout
- Air-conditioning
- Raised floors
- Suspended ceilings
- Openable windows with external sunblinds
- Kitchenette and toilets on every floor
- Cafeteria on the ground floor
- Underground parking
- Other services: post office, supermarket, nursery, pharmacy, fitness and wellness center, restaurants, cafes and others

Available from Q1 2018.

Rental and service charges listed without VAT. Lessee pays no commission.