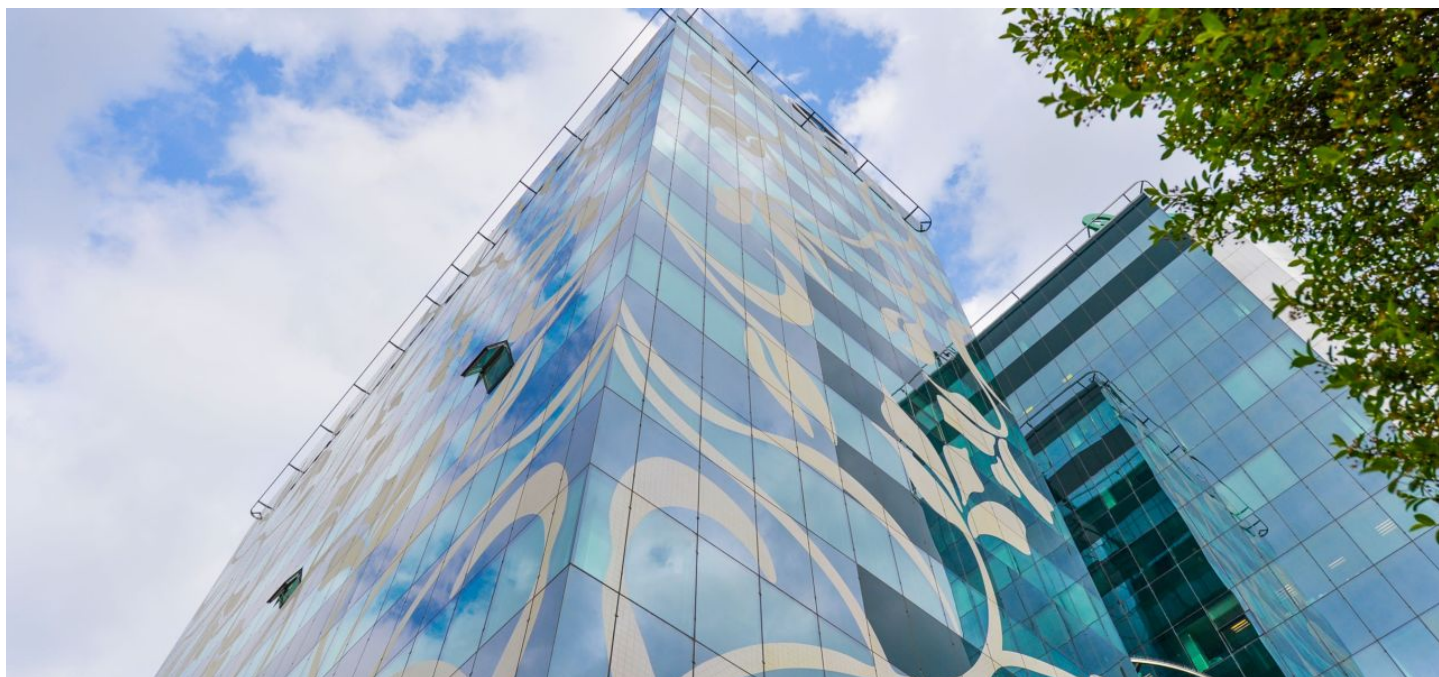




Office building

Prague 4, Chodov, Türkova

Rented





Office building

Prague 4, Chodov, Türkova

Rented

Service price	130 CZK monthly per m ²
Total building area	13 000 m ²
Tenant consumption	—
Parking	70 EUR
Parking service charges	—
Parking ratio	—
Certification	—
PENB	G
Reference number	15618

This modern administrative building offers high quality office space for lease that meets the highest international standards. There is a showroom, a dining room on the ground floor, parking in front of the building and underground parking. Close to the building there is a three-star hotel.

Location:

Easy access by car and public transport – in close vicinity of the Chodov metro station (line C) and several bus lines. Easy connection to the D1 highway and Prague highway. Nearby you can find a shopping center, restaurants, banks, and more.

Features and Services:

- Central reception
- Security service 24/7
- Magnetic card access
- Air-conditioning
- Raised floors
- Suspended ceilings
- Kitchenette and toilets
- Restaurant on the ground floor of the building
- Underground parking

Rental and service charges listed without VAT. Lessee pays no commission.